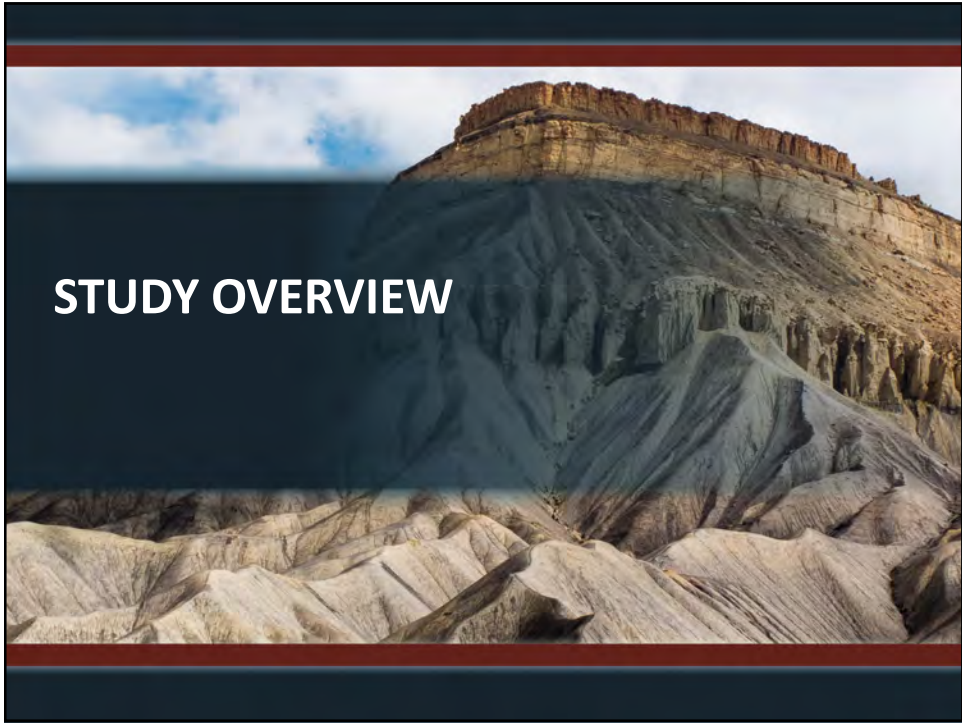




US 6 CLIFTON TRANSPORTATION STUDY

## Agenda

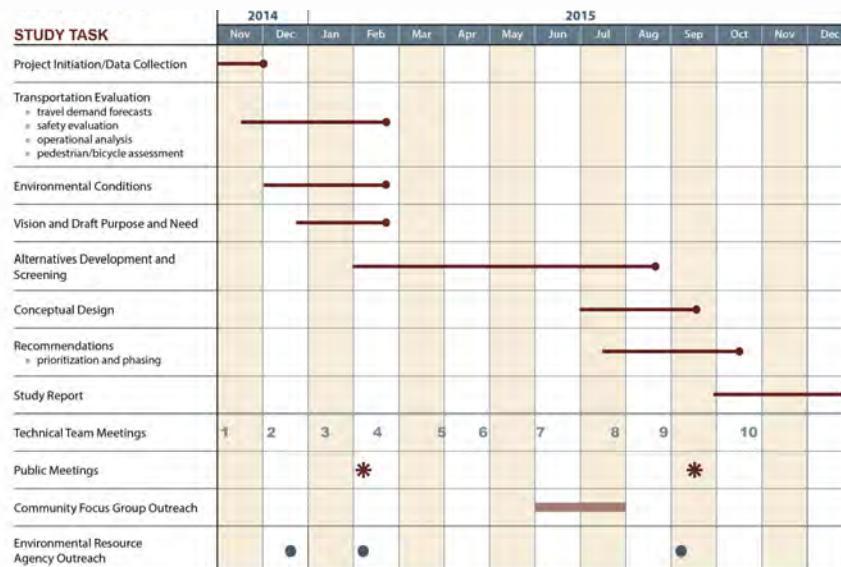
- Study Overview
- Alternatives Evaluation
  - Level 1 Screening
  - Level 2 Screening
- Next Steps
- Discussion
  - Feedback regarding alternatives moving forward



## Planning and Environmental Linkage (PEL) Study

- FHWA and CDOT PEL process includes:
  - Public outreach
  - Direct involvement with local governments and community groups
  - Coordination with environmental resource agencies
  - Documentation to National Environmental Policy Act (NEPA) standards
  - Documentation for FHWA concurrence

## Study Schedule



## Project Purpose and Need

- The purpose of any transportation improvements recommended by this study are to:
  - improve existing and future corridor and intersection operations,
  - to enhance multimodal connectivity, and
  - to improve safety
- for all users along US 6 from I-70B to 33 Road.

## Project Purpose and Need

- Transportation improvements are needed to address:
  - **Traffic Operational Issues**
    - Traffic operations along the US 6 corridor are inadequate with vehicular delays and queues experienced during peak periods today. Operations are expected to worsen by 2040.
  - **Lack of Adequate Multimodal Facilities**
    - Although there are various land uses that are likely to generate demand for walking and bicycling trips, there are almost no sidewalks and there are no bicycle facilities along the corridor.
  - **Safety Concerns**
    - There are safety concerns with vehicular crashes and pedestrian conflicts along US 6, primarily due to traffic congestion, pedestrian activity, and lack of access control.

## Project Secondary Goals

- Provide mobility choices for people and goods
- Support previous local and regional planning efforts
- Avoid and minimize environmental impacts
- Enhance economic opportunities to support community viability
- Balance mobility and access with implementation of the *US 6 – Clifton Access Control Plan*
- Maximize cost-effectiveness of funding investment

## Agency Coordination

- Technical Team
  - Comprised of staff from:
    - CDOT
    - Mesa County
    - Town of Palisade
    - City of Grand Junction
    - Federal Highway Administration (FHWA)
    - Grand Valley Metropolitan Planning Organization (GVMPO)
    - Grand Valley Transit
  - Provides input on key decision points

## Public Involvement

- Two public open house meetings:
  - Meeting #1 – February 5, 2015
    - Introduced study
    - Presented existing conditions and issues
    - Gathered feedback on transportation issues and problem areas
  - Meeting #2 – Fall 2015
    - Present results of alternatives evaluation
    - Present draft study recommendations

## Public Involvement

- Community Focus Groups (July 28)
  - Groups formed around specific interests
    - Business group
    - Residential/commuter/pedestrian/bicycle user group
- Individual stakeholder meetings
- Project website:  
[www.codot.gov/projects/us6cliftonstudy](http://www.codot.gov/projects/us6cliftonstudy)



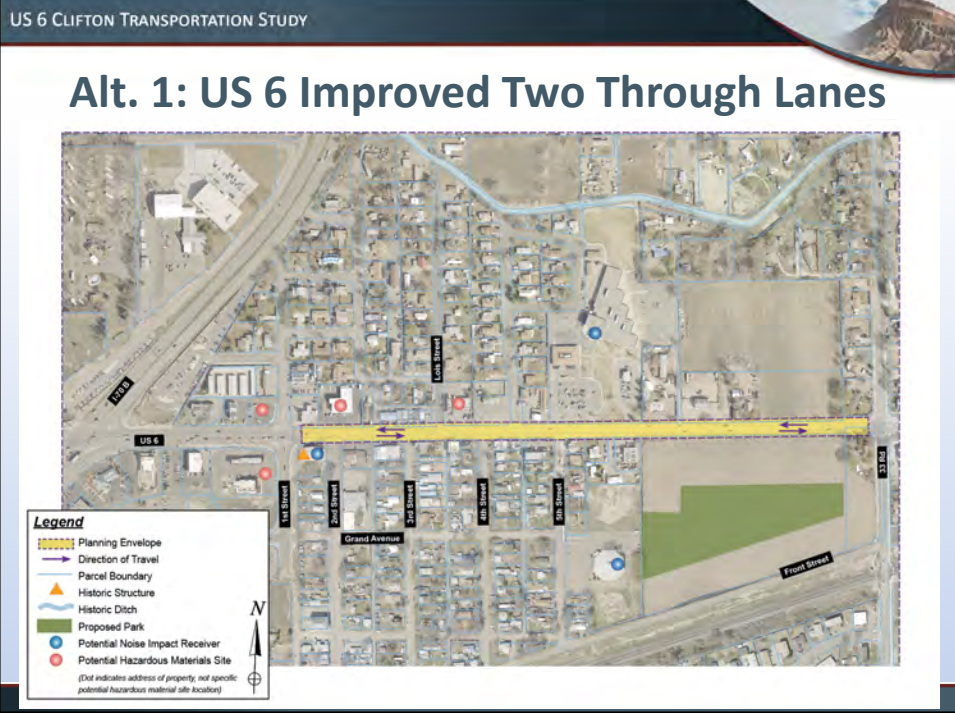
## Level 1 Screening

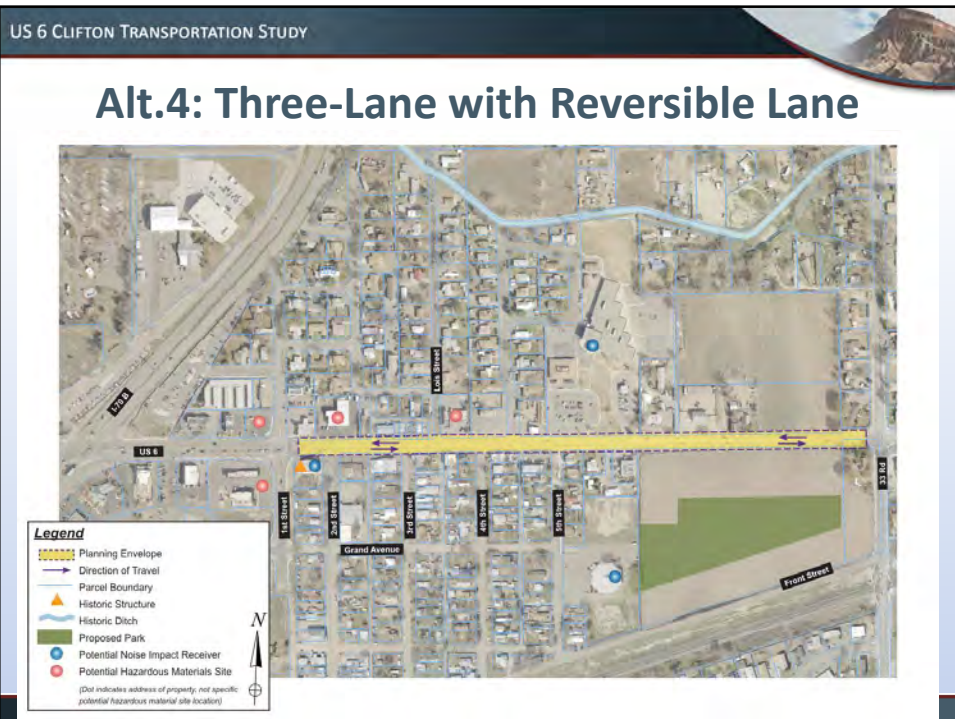
- Qualitative evaluation tied to Purpose and Need
- Evaluation criteria:
  - Traffic operations
  - Multimodal connectivity
  - Safety concerns
- Screening results:
  - Eliminated (3 alternatives)
  - Eliminated as a stand alone (5 alternatives)
  - Carried forward (8 alternatives, including No Action)

## Level 2 Alternatives

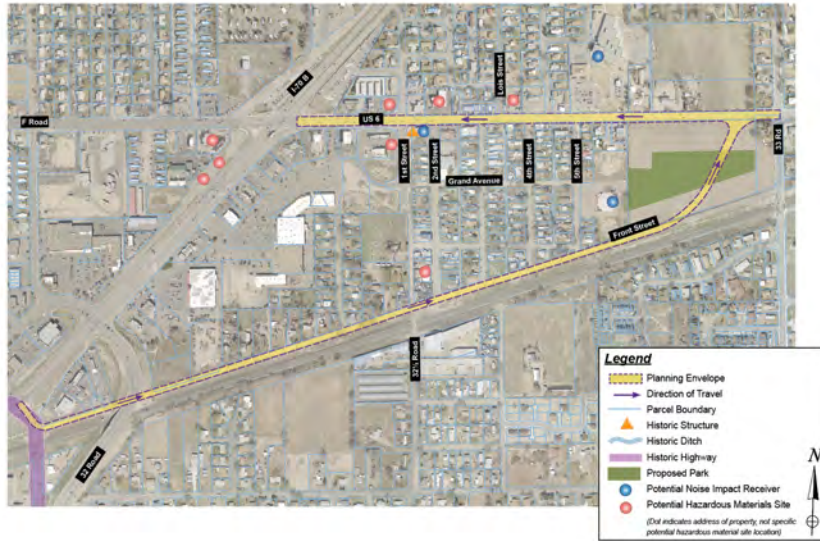
- Alternatives carried forward from Level 1:
  - Alt 1: US 6 Improved Two Through Lanes
  - Alt 2: US 6 Three Through Lanes
  - Alt 3: US 6 Four Through Lanes
  - Alt 4: Three-Lane with Reversible Lane
  - Alt 10: Front St/US 6 One-Way Couplet
  - Alt 11: Front St/US 6 One-Way Couplet at Peachtree
  - Alt 12: US 6/Grand Ave One-Way Couplet
- Alternatives packaged together from Level 1:
  - Alt 16: Front St Two-Way with US 6 Two Through Lanes
  - Alt 17: Front St One-Way EB with US 6 Two Through Lanes







### Alt.10: Front Street/US 6 One-Way Couplet, Old 32 Road to 33 Road



### Alt.11: Front Street/US 6 One-Way Couplet at Peach Tree Center





## Alt.17: Front Street Connection One-Way EB with US 6 Improved Two Through Lanes



## Level 2 Screening

- Identified potential impacts and compared alternatives using evaluation criteria:
  - Traffic operations
  - Multimodal connectivity
  - Safety concerns
  - Community
  - Environmental resources
  - Implementability
- Compared alternatives to identify which meet the project Purpose and Need the best

## Level 2 Screening Results

- Alternatives carried forward into Level 3 detailed screening:
  - No Action (required for comparison)
  - Alt 1: US 6 Improved Two Through Lanes
  - Alt 3: US 6 Four Through Lanes
  - Alt 16: Front St Two-Way with US 6 Two Through Lanes



**NEXT STEPS**

## Next Steps

- Level 3 alternatives concept development
  - Conceptual design to minimize impacts and optimize operations
- Level 3 alternatives evaluation
  - More quantitative analysis of potential benefits and impacts
  - Input from focus groups
- Identify recommendations for transportation improvements
  - Short- and long-term projects with conceptual costs

## Next Steps

- Public Meeting #2 – Fall 2015
- Finalize study recommendations and document in PEL Study Report
- Document agency and public/stakeholder support and/or concerns for study recommendations

## Provide Comments

- Do you agree with the Level 2 screening results?
- What things should the project team be considering as the alternatives are further developed/screened?
- For more information, or to leave a comment:  
[www.codot.gov/projects/us6cliftonstudy](http://www.codot.gov/projects/us6cliftonstudy)

## US 6 Clifton Transportation Study

Community Focus Group  
Meetings

July 28, 2015

