

Fish & Wildlife Resources

Wildlife habitat is highly modified by noxious weed infestation, and right-of-way disturbances, in the project area. Williams Creek and Wild Horse Dry Creek provide habitat for fish and wildlife.

- The project would not permanently impact fish habitat or impede fish movement.
- The project would result in approximately 40 acres of habitat loss due to the removal of vegetation and fragmentation of habitat with the addition of a third lane.

Migratory Bird Nests and Habitat

Migratory bird nests and habitat identified along Williams Creek, Wild Horse Dry Creek, and near Purcell Blvd./US 50 intersection may be affected.

Special Status Species

- No suitable habitat for federally-listed threatened or endangered species.
- Prairie dog colonies adjacent to US 50 that provide habitat for Western Burrowing Owls (State Threatened Species) would be effected.
- Habitat for massasauga rattlesnake, triploid Colorado checkered whiptail, plains leopard frog, and northern leopard frog (State Species of Special Concern) present in project area would be affected.

Water Quality

A stormwater management plan will prevent erosion and the deposition of sediment into Williams Creek, a tributary to Williams Creek, and Wild Horse Dry Creek. Water quality ponds and flat swales along US 50 will also treat stormwater runoff from US 50.

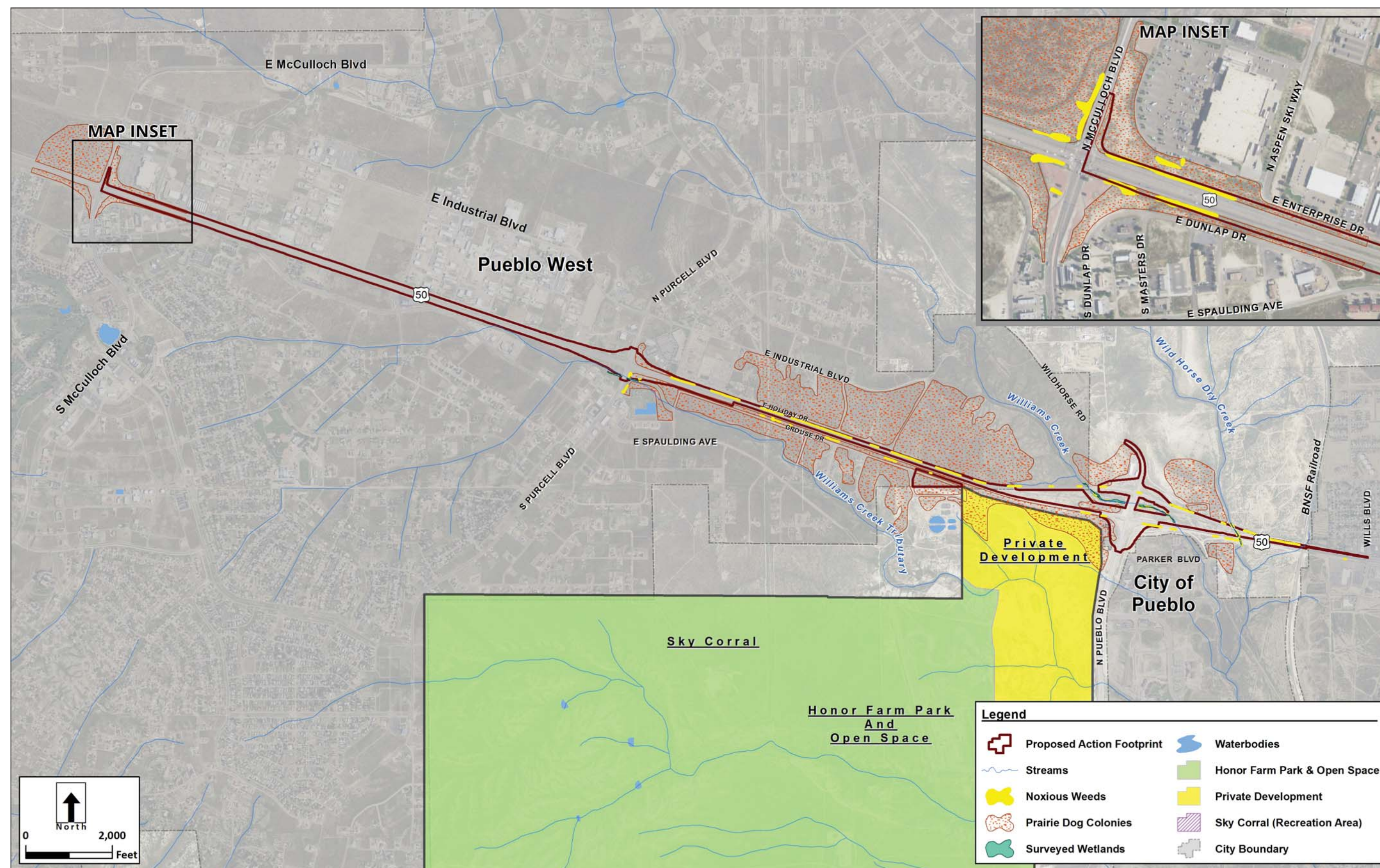
Park and Recreation Resources

The Honor Farm Park and Open Space is located near US 50, but will not be affected by the project.

Right-of-Way

Would require additional right-of-way for transportation and water quality improvements.

- Regional Water Quality Pond
- Minor right-of-way required for Wild Horse Road alignment



Other Resources Analyzed

Air Quality

The project would reduce air pollution from eastbound US 50. The project would not cause exceedences of regulatory thresholds for any criteria pollutants, nor would it result in changes in traffic volumes, vehicle mix, or any other factor that would cause an increase in mobile source air toxics.

Wetlands/Waters of the United States

The project would affect approximately .025 acre of Waters of the US, including wetlands.

Historic, Archaeological, & Paleontological Resources

The project would not affect historic resources, but ground disturbance from heavy equipment and construction activities has the potential to encounter unknown buried cultural material and/or subsurface fossils.

Hazardous Materials

Not expected to encounter hazardous materials.