



US 40 Fraser



Project Introduction
October 17, 2019



Today's Discussion

Project Overview

CSS Overview

Review of Critical Success Factors

Timeline and Next Steps





Project Overview

CDOT Feasibility Study

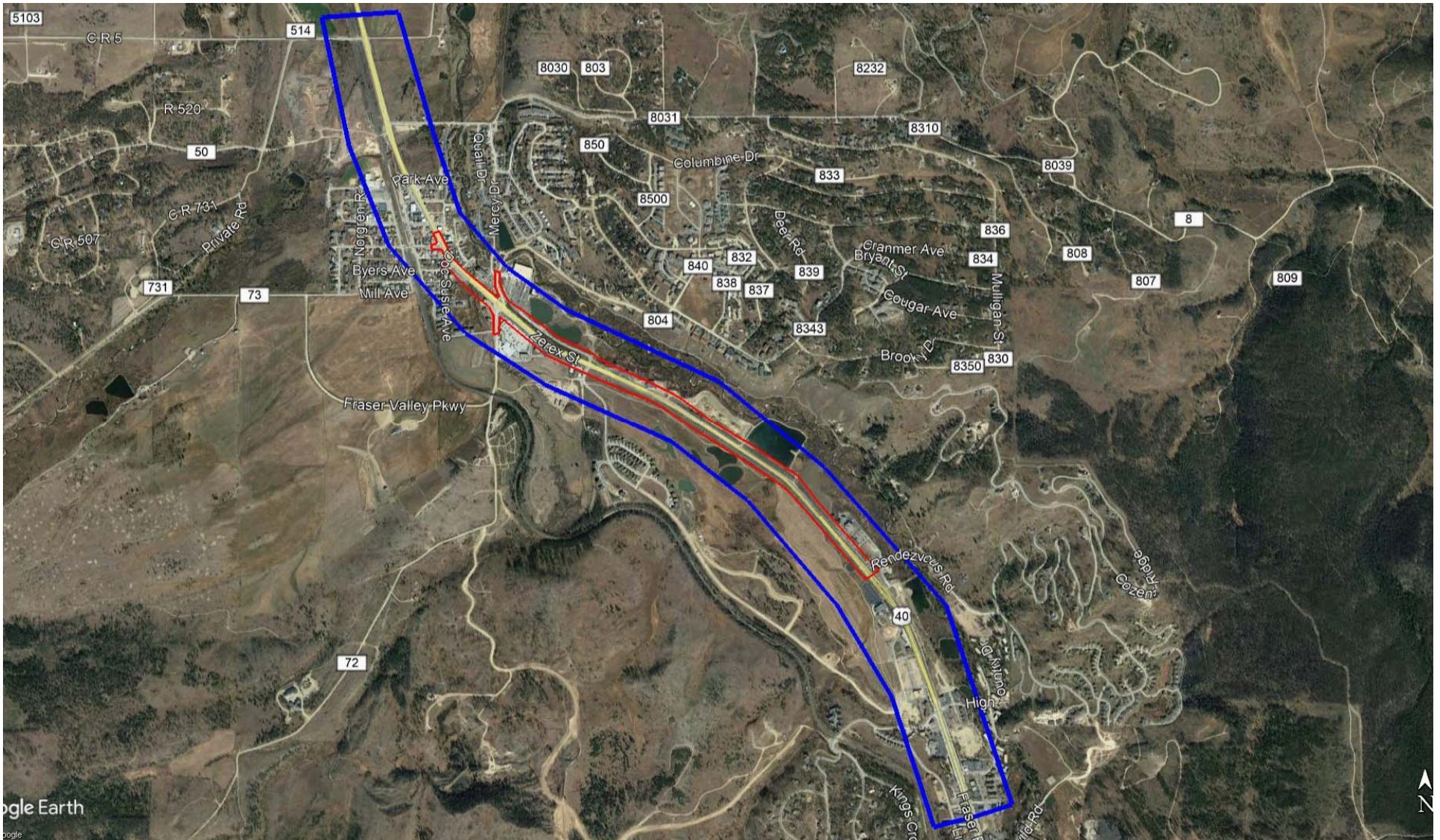
- US 40 Widening to 4 Lanes - Eisenhower Drive to Rendezvous Road
 - Multi-use path realignment
- CR 72 Intersection Improvements
 - Roundabout vs. improved signal
- Safety Improvements based on accident history

Town of Fraser Traffic Study (Scope B)

- Town roadway network traffic analysis CR 5 to Fraser Valley Parkway
 - US 40 Alternative Road analysis - Fraser Valley Parkway
-



Project Overview





CSS Overview

Commitment from I-70 Mountain Corridor Programmatic EIS

Establishes a process of making long-term decisions taking into account diverse perspectives—values, beliefs, and expectations. Based on principles and methodology, a set of tools is designed to help groups agree on strategic actions when decision makers either have amongst themselves, or must consider, perspectives other than their own.





Context Sensitive Solutions (CSS)

Overview of the 6-Step Process



<https://www.codot.gov/projects/contextsensitivesolutions>



Define Desired Outcomes and Actions

Using the CSS Guidance and other relevant materials, this step establishes the project goals and actions. It also defines the terms to be used and decisions to be made.

- Context Statement
- Core Values
- Critical Issues
- Critical Success Factors





Draft Success Factors

Context Statement

The community of Fraser in Grand County is renowned for its quality of life. This community is a recreational destination and unique place to live.

With this scenic beauty and amenities, a large amount of growth has occurred in the community along with increasing tourism, making it challenging to balance high quality of life and the need for safe and efficient travel.

We want to develop a project that respects community values and helps to sustain the high quality of life the community has become accustomed to.

Core Values

Sustainability

Local Engagement

Mobility and Accessibility

Safety

Project Delivery

Healthy Environment

Local Identity

Economic Development

Critical Issues

- » Federal and State requirements
- » Schedule and budget constraints
- » Maintenance

- » Decision Making
- » Community Context
- » Future development

- » Access to trails/recreation
- » Access to US 40
- » Access to Parking

- » Poor Operational Performance
- » Capacity deficiencies
- » Recurring Congestion

- » Safety for all modes of travel (vehicles, pedestrians, bicyclists, etc.)

- » Work within budget constraints
- » Accelerate project delivery with realistic funding opportunities

- » Impacts to the natural environment

- » Growth should accommodate unique community character

- » Access for tourism
- » Business Access

Success Factors

- » Design a project that allows CDOT to meet all State and Federal requirements
- » Develop a Methods for Maintenance plan
- » Determine best management practices for point source discharge locations.

- » Public input and involvement
- » Support local and regional planning efforts

- » Enhance multimodal mobility options to serve travel demand for all users. Support connectivity to trails from town and winter recreation.
- » Accesses should be designed so they are appropriate for use.
- » Support pedestrian accessibility around town including parking and access from Amtrak station.

- » Preserve and enhance mobility along the corridor.
- » Accommodate large vehicles and emergency services. Accommodate transit (The Lift and Future transit operations on US 40)
- » Balance local access and regional mobility

- » Define safe and efficient access movements for all users along the corridor and at intersections
- » Include design measures to help manage speeds

- » Secure partnerships between CDOT, County and Town to expand scope of study to CR 5.
- » Identify logical phased implementation projects
- » Identify capital investment partnerships

- » Minimize and mitigate environmental impacts

- » Preserve small town feel through project aesthetics and lighting

- » Improve accessibility for tourism. Appropriate Signage Plan (CDOT) and wayfinding signage.



Critical Success Factors



US 40 Fraser



Critical Success Factors

1. Design a project that allows CDOT to meet all State and Federal requirements
2. Define safe and efficient access movements for all users along the corridor and at intersections (e.g. maintenance vehicles, residential and commercial driveways, town streets)
3. Enhance multimodal mobility options to serve travel demand for all users. Support connectivity to trails from Town and winter recreation.
4. Minimize and mitigate environmental impacts (e.g. wetlands, water quality, revegetation)
5. Include design measures to help manage speeds (e.g. raised medians, curb and gutter, lane widths)
6. Preserve small town feel through project aesthetics and lighting
7. Accesses should be designed so they are appropriate for use.
8. Preserve and enhance mobility along the corridor.
9. Support pedestrian accessibility around town including parking and access from Amtrak station.
10. Accommodate large vehicles and emergency services (Oversize loads, school buses, The Lift). Accommodate transit include The Lift and future transit operations on US 40.
11. Balance local access and regional mobility
12. Support local and regional planning efforts
13. Public input and involvement
14. Improve accessibility for tourism. Appropriate Signage Plan (CDOT) and wayfinding signage (by Town and County).
15. Build a project that is maintainable by CDOT, Town and County.
16. Develop a Methods for Maintenance plan.
17. Determine the best management practices for point source discharge locations
18. Secure partnerships between CDOT, County and Town to expand scope of study to CR 5
19. Identify logical phased implementation projects
20. Identify capital investment partnerships

The project's critical success factors were defined by the Project Leadership Team (PLT). Team members on the PLT included CDOT, Town of Fraser, and Grand County.



Draft CR 72 Intersection Criteria

- Pedestrian Mobility
- Vehicular Mobility
- Safety
- Truck and oversize vehicle mobility
- Aesthetics





Draft US 40 Criteria

- Access to US 40
- Consider gateway feature impacts

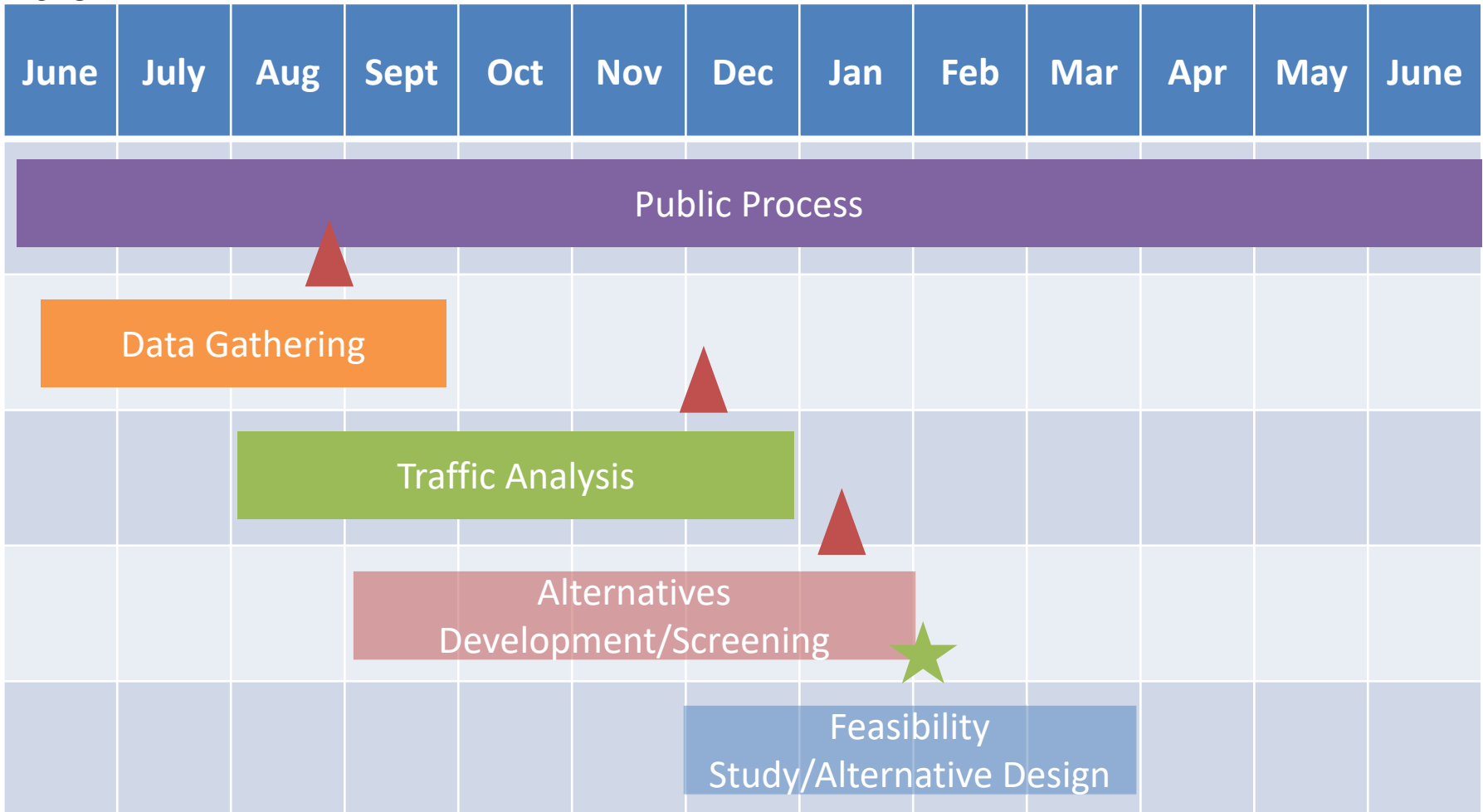




Timeline and Next Steps

2019

2020



: PLT Meeting

: Open House

