



US-6 Palisade Improvements Access Control Plan (ACP)





What is an Access Control Plan?

- Reduce access points to major roadways.
- Improve pedestrian and motorist safety.
- Improve traffic flow.
- Can be used as a planning tool for the Town.

Access Control Plan Principles & Techniques

Consolidate the number of direct access points to major roadways.

EXISTING ACCESS

CONSOLIDATED ACCESS POINTS

Minimize the number of locations where vehicles merge, split, or cross.

RIGHT-IN, RIGHT-OUT WITH RAISED MEDIUM

DIRECTIONAL MEDIAN OPENING OR 3/4 MOVEMENT

DEFINE DRIVEWAYS

Provide a supporting local street network.

RELOCATE ACCESS TO SIDE STREET

ACCESS CONTROL PLAN

- Long Term Planning Tool
- Improves Safety
- Improves Traffic Flow
- Supports the town's long term plans

COLORADO
Department of Transportation



US-6 Palisade Improvements Access Control Plan (ACP) Overview

- Alternative Evaluation was completed in 2022.
- Resulting Preferred Alternative
 - Interim Access Control Plan:
 - Roundabout at US-6 and Elberta Intersection.
 - The south frontage will be changed from two-lane road to one-way road with shared use path.
 - Eliminate NW frontage road (between 37 1/10 Rd and Elberta).
 - Long-Term Access Control Plan
 - Additional Roundabouts at US-6 and Iowa and 37 1/10 Rd Intersections.
 - Elimination of all frontage roads and change to direct access onto highway.

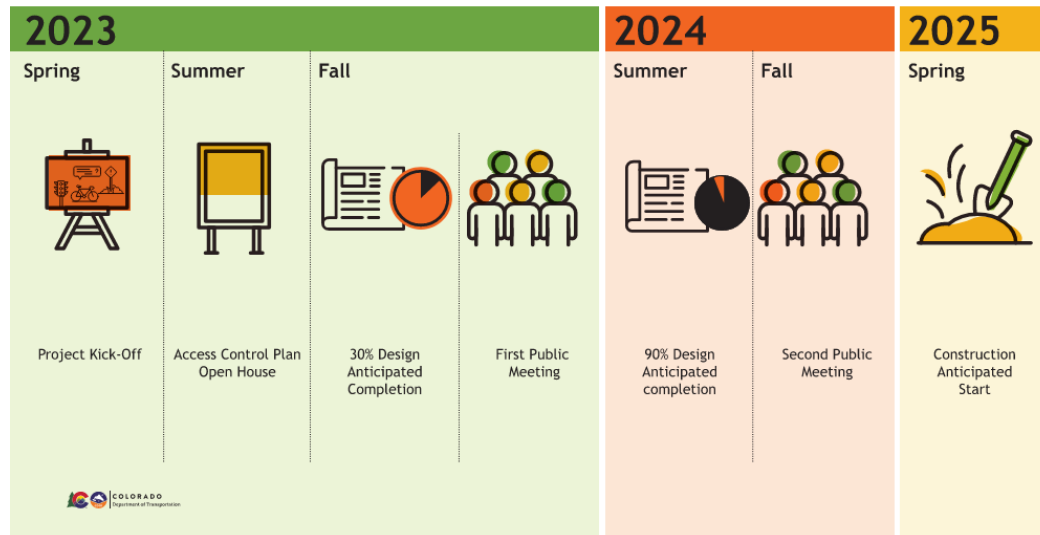




ACP Timeline

- 6/06/23 – Introduction of ACP to Town of Palisade Board
- 6/13/23 – Access Control Plan Open House (4pm-6:00pm)
- June – July 2023 – 1 on 1 meetings with property owners
- July 2023 – Request Adoption of ACP from Town of Palisade Board
- August 2023 – Finalize ACP report
- August 2023 – February 2024 – Finalize IGA

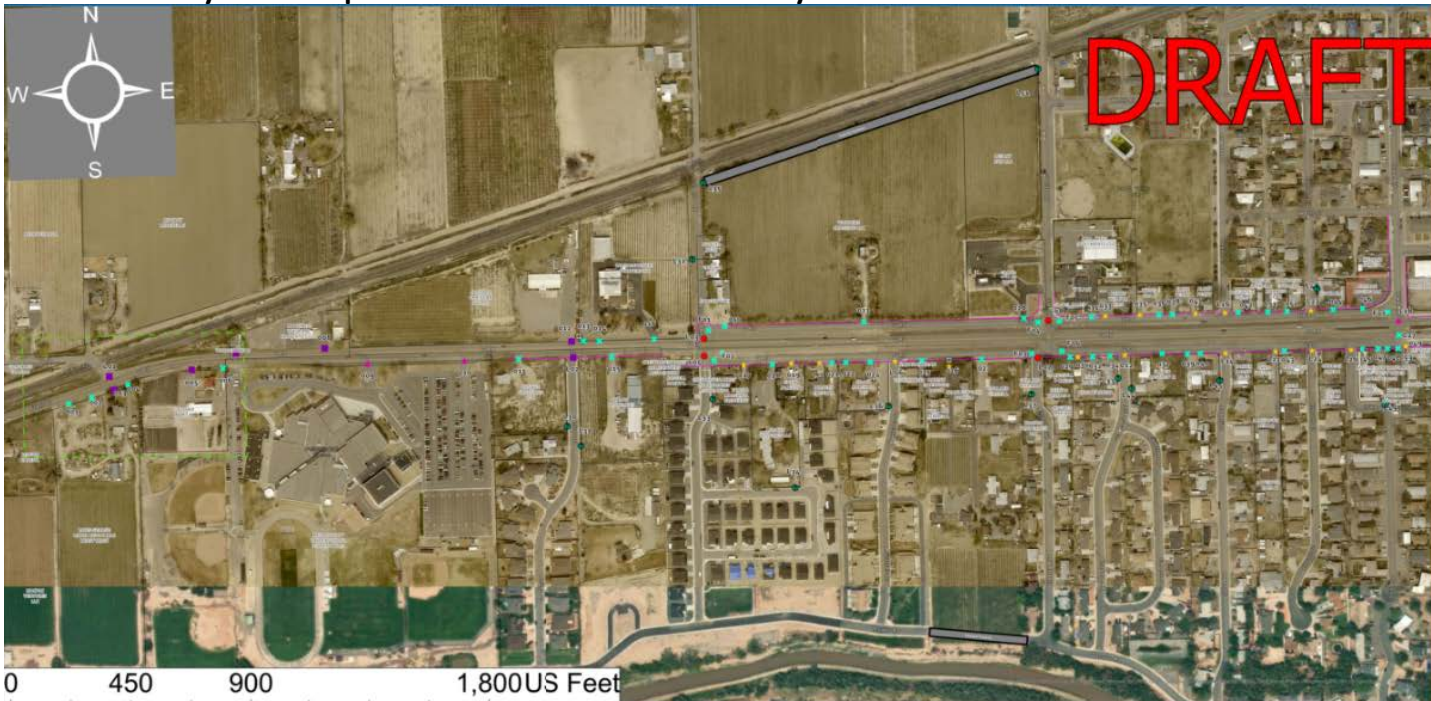
US 6 Palisade Intersection Improvements Project Timeline





Access Control Plan (Long-Term)

- Will be implemented when a property redevelops or when necessary for the improved safety and operation of the roadway.



Highway 6 Palisade Improvements Project Access Plan

Legend

□ Parcel	▲ 3/4 Movement	— CDOT ROW Line	● Town Discretion
● Right-in/Right-out Proposed	● Major Intersection Unsignalized	● Close Access Potential Roadway	● Mesa County Jurisdiction
● Cross Access for Shared Access Point	● Full Movement		

This is a long term access plan for the purpose of bringing US 6 into conformance with the State Highway Access Code. Implementation of the long term access plan can occur with property redevelopment or when necessary for the improved safety and operation of the roadway. The access plan map is intended to show recommendations for accesses only and not planned multi modal or roadway improvement designs. The background map is only for location and identification purposes and is the existing condition.



Access Management Plan (Interim)

- Will be implemented during construction of the US-6 Palisade Improvements Project.

