








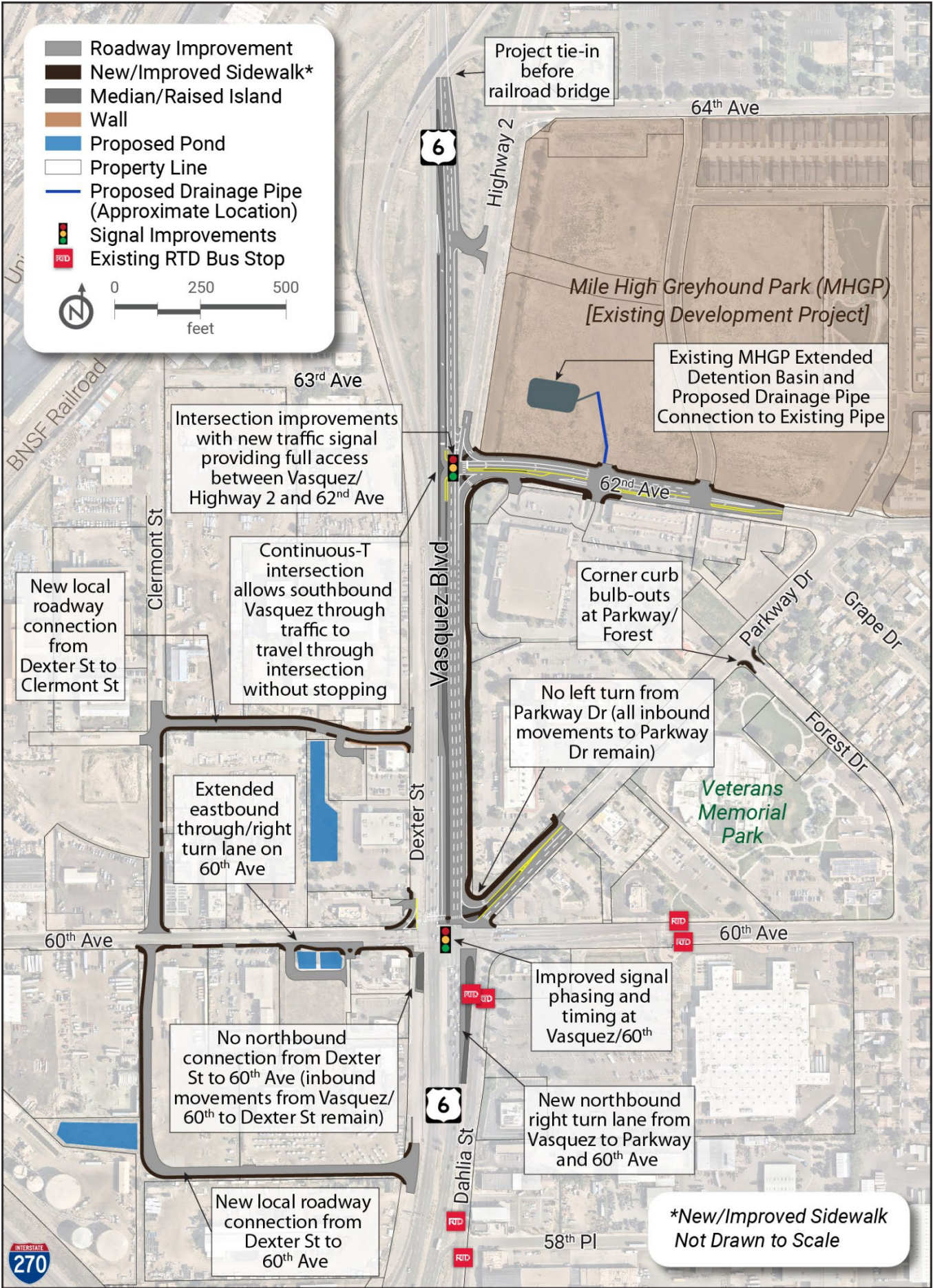


-  Roadway Improvement
-  New/Improved Sidewalk*
-  Median/Raised Island
-  Wall
-  Proposed Pond
-  Property Line
-  Proposed Drainage Pipe (Approximate Location)
-  Signal Improvements
-  Existing RTD Bus Stop

0 250 500
feet

N



Project tie-in before railroad bridge

64th Ave

6

Highway 2

Mile High Greyhound Park (MHGP)
[Existing Development Project]

Existing MHGP Extended Detention Basin and Proposed Drainage Pipe Connection to Existing Pipe

63rd Ave
Intersection improvements with new traffic signal providing full access between Vasquez/ Highway 2 and 62nd Ave

Continuous-T intersection allows southbound Vasquez through traffic to travel through intersection without stopping

New local roadway connection from Dexter St to Clermont St

Clermont St

62nd Ave
Corner curb bulb-outs at Parkway/ Forest

No left turn from Parkway Dr (all inbound movements to Parkway Dr remain)

Parkway Dr

Grape Dr

Veterans Memorial Park

Extended eastbound through/right turn lane on 60th Ave

Dexter St

60th Ave

No northbound connection from Dexter St to 60th Ave (inbound movements from Vasquez/ 60th to Dexter St remain)

Improved signal phasing and timing at Vasquez/60th

60th Ave

New northbound right turn lane from Vasquez to Parkway and 60th Ave

6

Dahlia St

New local roadway connection from Dexter St to 60th Ave

58th Pl

*New/Improved Sidewalk Not Drawn to Scale

