



Crashes with DUI Related Charges

Trends

2007–2012 Crashes with DUI Related Charges by Severity..... 46

Counties

Crashes with DUI Related Charges by County 47

Drivers

DUI Driver Age Range 48

DUI Driver Gender 49

Other Drivers Age Range 50

Other Drivers Gender 51

Crash Conditions

Month 52

Day of Week 52

Hour of Day 53

Accident Type 54

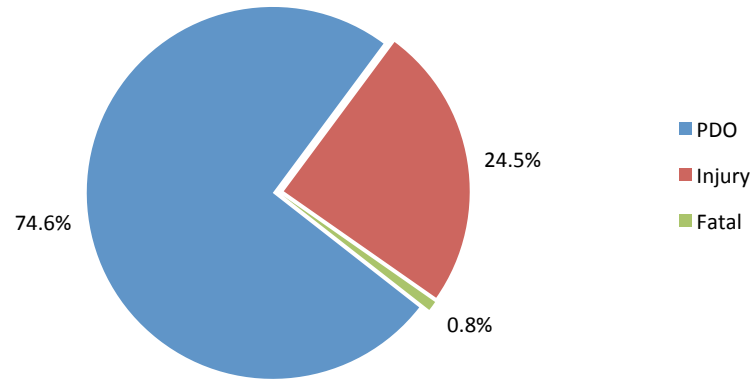
Movement..... 55

Road Conditions..... 56

Weather Conditions 57

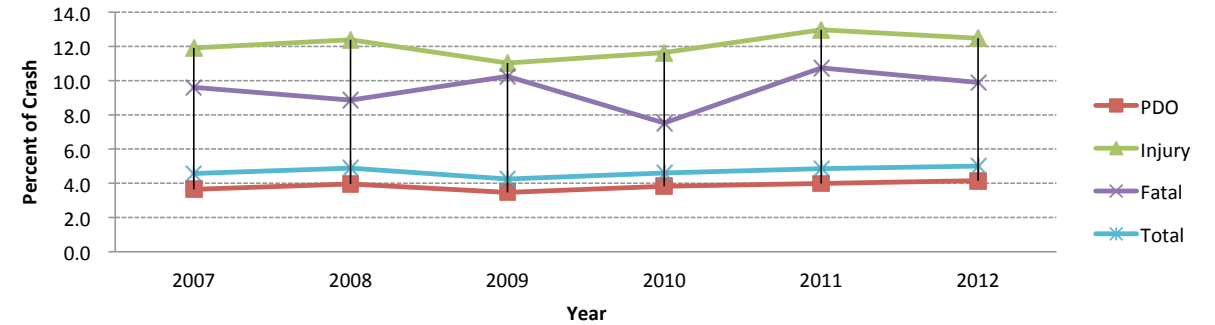
Road Descriptions 58

2012 Crashes by Severity with DUI Related Charges



- Over the six-year period, total DUI occurrence was highest in 2007 decreasing to its lowest in 2009.
- Annual rates increased steadily and 2012 saw the highest percentage of crashes with DUI related charges of the six years observed.

Percentage of Crash Severity of Crashes with DUI Related Charges



- A general decrease in all DUI related events can be observed in the years 2009 and 2010.
- In 2012, just over 25% of crashes with DUI related charges resulted in injury or a fatality.
- Fatalities observed in crashes with DUI charges dropped dramatically in 2010.
- Crashes resulting in injury with DUI related charges saw a significant drop in 2009 and 2010.

2007–2012 SEVERITY OF CRASH WITH DUI RELATED CHARGES BY YEAR								
YEAR	PDO		INJURY		FATAL		TOTAL	
	ALL	DUI	ALL	DUI	ALL	DUI	ALL	DUI
2007	99,159	3,638	12,231	1,459	509	49	111,899	5,146
2008	93,146	3,705	11,213	1,391	473	42	104,832	5,138
2009	91,044	3,170	10,216	1,128	438	45	101,698	4,343
2010	89,183	3,434	9,523	1,111	411	31	99,117	4,576
2011	91,117	3,648	9,581	1,244	409	44	101,107	4,936
2012	90,482	3,784	9,965	1,245	434	43	100,881	5,072

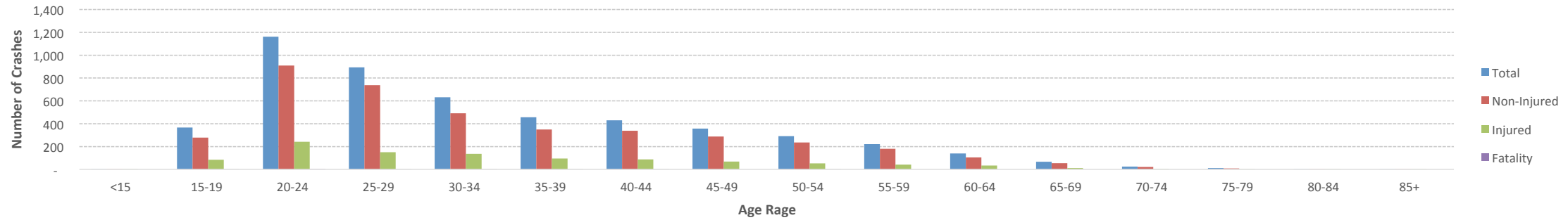
2007–2012 PERCENT OF CRASHES WITH DUI RELATED CHARGES BY YEAR				
YEAR	PDO	INJURY	FATAL	TOTAL
2007	3.7	11.9	9.6	4.6
2008	4.0	12.4	8.9	4.9
2009	3.5	11.0	10.3	4.3
2010	3.9	11.7	7.5	4.6
2011	4.0	13.0	10.8	4.9
2012	4.2	12.5	9.9	5.0

2012 SEVERITY OF CRASHES WITH DUI RELATED CHARGES BY COUNTY								
COUNTY	CRASHES WITH DUI RELATED CHARGES				PERSONS INVOLVED		TOTAL CRASHES	% OF DUI CRASHES
	PDO	INJURY	FATAL	TOTAL	INJURED	FATALITY		
Adams	443	118	2	563	157	2	9,136	6.2
Alamosa	5	5	-	10	6	-	341	2.9
Arapahoe	413	101	4	518	137	4	10,722	4.8
Archuleta	12	6	-	18	7	-	296	6.1
Baca	3	1	-	4	1	-	45	8.9
Bent	3	1	-	4	1	-	72	5.6
Boulder	193	63	2	258	84	3	5,325	4.8
Broomfield	36	6	-	42	10	-	1,187	3.5
Chaffee	14	5	-	19	5	-	350	5.4
Cheyenne	1	-	-	1	-	-	47	2.1
Clear Creek	15	2	-	17	2	-	528	3.2
Conejos	3	4	-	7	6	-	106	6.6
Costilla	1	4	-	5	5	-	153	3.3
Crowley	2	2	-	4	2	-	32	12.5
Custer	1	2	-	3	3	-	71	4.2
Delta	21	12	1	34	17	1	469	7.2
Denver	471	206	1	678	288	1	17,020	4.0
Dolores	2	1	-	3	1	-	41	7.3
Douglas	173	30	2	205	47	2	4,166	4.9
Eagle	36	15	-	51	18	-	1,024	5.0
El Paso	501	146	5	652	189	6	10,658	6.1
Elbert	5	3	1	9	6	1	277	3.2
Fremont	23	11	1	35	13	1	669	5.2
Garfield	34	9	3	46	15	3	1,385	3.3
Gilpin	12	4	-	16	5	-	125	12.8
Grand	12	5	-	17	6	-	389	4.4
Gunnison	6	1	-	7	1	-	305	2.3
Hinsdale	-	-	-	-	-	-	16	0.0
Huerfano	7	3	-	10	3	-	242	4.1
Jackson	1	-	-	1	-	-	84	1.2
Jefferson	418	131	7	556	180	7	10,320	5.4
Kiowa	1	-	-	1	-	-	23	4.3

COUNTY	CRASHES WITH DUI RELATED CHARGES				PERSONS INVOLVED		TOTAL CRASHES	% OF DUI CRASHES
	PDO	INJURY	FATAL	TOTAL	INJURED	FATALITY		
Kit Carson	2	2	1	5	3	1	142	3.5
La Plata	45	26	-	71	39	-	1,199	5.9
Lake	4	2	-	6	3	-	76	7.9
Larimer	215	81	5	301	99	5	5,392	5.6
Las Animas	14	7	-	21	11	-	370	5.7
Lincoln	1	-	-	1	-	-	113	0.9
Logan	15	8	-	23	10	-	441	5.2
Mesa	99	32	-	131	43	-	2,562	5.1
Mineral	-	3	-	3	4	-	81	3.7
Moffat	5	9	-	14	9	-	325	4.3
Montezuma	13	8	-	21	15	-	503	4.2
Montrose	13	10	-	23	11	-	587	3.9
Morgan	17	7	1	25	8	1	548	4.6
Otero	12	5	-	17	9	-	252	6.7
Ouray	2	3	-	5	3	-	122	4.1
Park	9	7	-	16	12	-	363	4.4
Phillips	1	-	-	1	-	-	47	2.1
Pitkin	15	5	-	20	8	-	536	3.7
Prowers	5	2	-	7	2	-	157	4.5
Pueblo	129	39	2	170	50	4	3,693	4.6
Rio Blanco	4	4	-	8	6	-	154	5.2
Rio Grande	8	2	-	10	2	-	230	4.3
Routt	24	8	1	33	9	1	681	4.8
Saguache	5	1	1	7	5	1	150	4.7
San Juan	3	1	-	4	2	-	49	8.2
San Miguel	10	2	-	12	2	-	145	8.3
Sedgwick	1	1	-	2	1	-	43	4.7
Summit	29	5	1	35	5	1	814	4.3
Teller	14	12	-	26	13	-	439	5.9
Washington	6	1	-	7	1	-	125	5.6
Weld	194	53	2	249	70	2	4,792	5.2
Yuma	2	2	-	4	2	-	126	3.2
TOTAL	3,784	1,245	43	5,072	1,672	47	100,881	5.0

- Of the 100,881 crashes in Colorado in 2012, approximately 5% were DUI related.
- Gilpin County saw the highest percentage (12.8%) of DUI related crashes and Crowley County second with 12.5% of crashes relating to DUI. However, neither of these counties saw any DUI related fatalities.
- In 2012, Denver County contributed nearly 17% of all crashes in the state. Of those crashes involving DUI charges, Denver had 13.4% of those observed statewide.

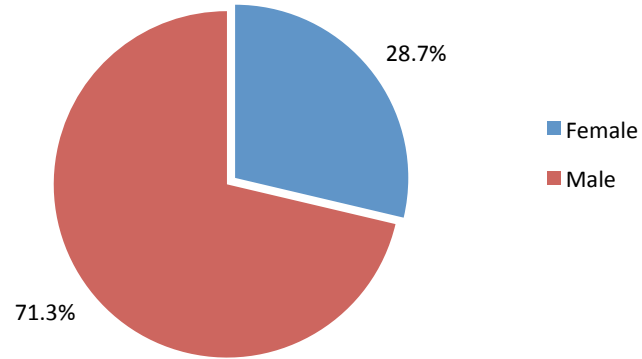
2012 Drivers with DUI Related Charges in Crashes by Age



2012 DRIVERS WITH DUI RELATED CHARGES IN CRASHES BY AGE										
AGE	UNKNOWN INJURY		NON-INJURED		INJURED		FATALITY		TOTAL	
	#	%	#	%	#	%	#	%	#	%
<15	-	0.0	2	0.0	1	0.1	-	0.0	3	0.1
15-19	3	7.3	279	6.9	84	8.3	1	6.7	367	7.2
20-24	6	14.6	910	22.6	242	23.9	4	26.7	1,162	22.8
25-29	4	9.8	737	18.3	150	14.8	3	20.0	894	17.6
30-34	3	7.3	491	12.2	137	13.5	1	6.7	632	12.4
35-39	8	19.5	350	8.7	96	9.5	2	13.3	456	9.0
40-44	3	7.3	338	8.4	87	8.6	2	13.3	430	8.4
45-49	1	2.4	287	7.1	69	6.8	-	0.0	357	7.0
50-54	2	4.9	235	5.8	52	5.1	2	13.3	291	5.7
55-59	-	0.0	180	4.5	42	4.1	-	0.0	222	4.4
60-64	1	2.4	105	2.6	34	3.4	-	0.0	140	2.8
65-69	1	2.4	55	1.4	11	1.1	-	0.0	67	1.3
70-74	-	0.0	21	0.5	4	0.4	-	0.0	25	0.5
75-79	-	0.0	8	0.2	3	0.3	-	0.0	11	0.2
80-84	-	0.0	2	0.0	1	0.1	-	0.0	3	0.1
85+	1	2.4	1	0.0	1	0.1	-	0.0	3	0.1
Unknown	8	19.5	18	0.4	-	0.0	-	0.0	26	0.5
TOTAL	41	100.0	4,019	100.0	1,014	100.0	15	100.0	5,089	100.0

- Drivers aged 20–24 were those most often observed in crashes with DUI charges in all categories.
- Drivers aged 25–29 were the second most often group in crashes with DUI charges in all categories.
- The overall trend for age groups of drivers in crashes with DUI related charges decreased after the age 30.

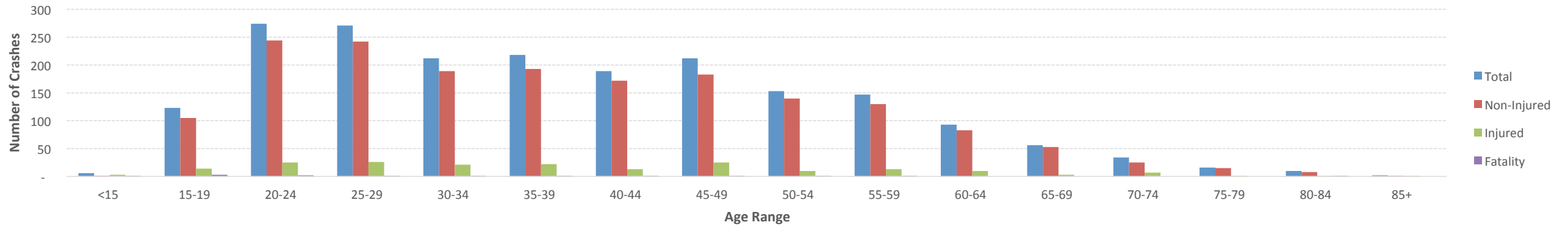
2012 Gender of Drivers with DUI Related Charges in Crashes



2012 GENDER OF DRIVERS WITH DUI RELATED CHARGES IN CRASHES										
GENDER	UNKNOWN INJURY		NON-INJURED		INJURED		FATALITY		TOTAL	
	#	%	#	%	#	%	#	%	#	%
Female	14	34.1	1,177	29.3	258	25.4	2	13.33	1,451	28.51
Male	20	48.8	2,821	70.2	753	74.3	13	86.67	3,607	70.88
Unknown	7	17.1	21	0.5	3	0.3	-	0.00	31	0.61
TOTAL	41	100.0	4,019	100.0	1,014	100.0	15	100.00	5,089	100.00

- In 2012 men were far more likely to be at-fault in a DUI related crash than women, contributing to approximately 71% of the total.
- Drivers charged with a DUI resulting in a fatality, approximately 87% were male than female.

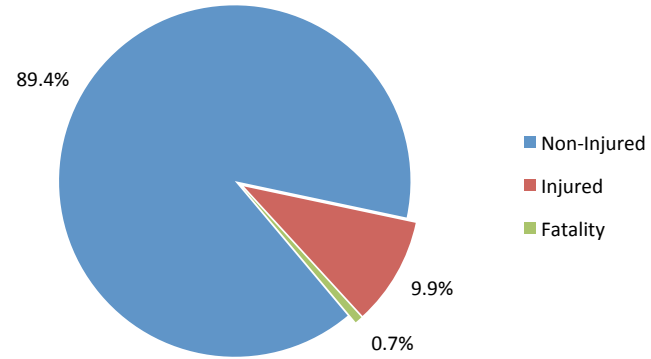
2012 Sober Drivers by Age in Crashes with DUI Related Charges



2012 SOBER DRIVERS BY AGE IN CRASHES WITH DUI RELATED CHARGES										
AGE	UNKNOWN INJURY		NON-INJURED		INJURED		FATALITY		TOTAL	
	#	%	#	%	#	%	#	%	#	%
<15	1	1.2	1	0.1	3	1.5	1	7.1	6	0.3
15-19	1	1.2	105	5.8	14	7.0	3	21.4	123	5.9
20-24	3	3.7	244	13.6	25	12.6	2	14.3	274	13.1
25-29	2	2.5	242	13.5	26	13.1	1	7.1	271	13.0
30-34	1	1.2	189	10.5	21	10.6	1	7.1	212	10.1
35-39	2	2.5	193	10.8	22	11.1	1	7.1	218	10.4
40-44	3	3.7	172	9.6	13	6.5	1	7.1	189	9.0
45-49	3	3.7	183	10.2	25	12.6	1	7.1	212	10.1
50-54	2	2.5	140	7.8	10	5.0	1	7.1	153	7.3
55-59	3	3.7	130	7.2	13	6.5	1	7.1	147	7.0
60-64	-	0.0	83	4.6	10	5.0	-	0.0	93	4.5
65-69	-	0.0	53	3.0	3	1.5	-	0.0	56	2.7
70-74	2	2.5	25	1.4	7	3.5	-	0.0	34	1.6
75-79	-	0.0	15	0.8	1	0.5	-	0.0	16	0.8
80-84	-	0.0	8	0.4	1	0.5	1	7.1	10	0.5
85+	-	0.0	1	0.1	1	0.5	-	0.0	2	0.1
Unknown	58	71.6	11	0.6	4	2.0	-	0.0	73	3.5
TOTAL	81	100.0	1,795	100.0	199	100.0	14	100.0	2,089	100.0

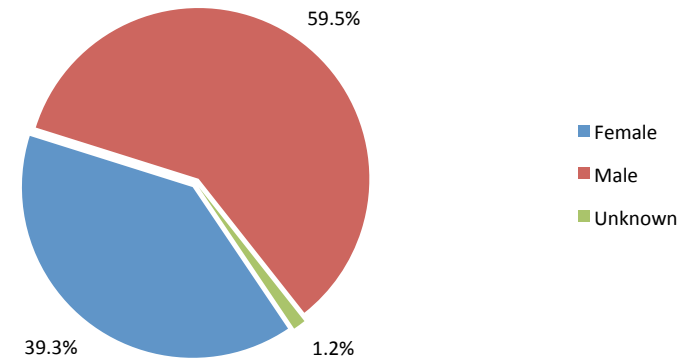
- Drivers in their 20's (groups 20–24 and 25–29) were most often observed in crashes with drivers charged with a DUI.

2012 Sober Drivers in Crashes with DUI Related Charges Injury Severity



- Of those drivers involved in a crash with a driver charged with a DUI, 89.4% were not injured.

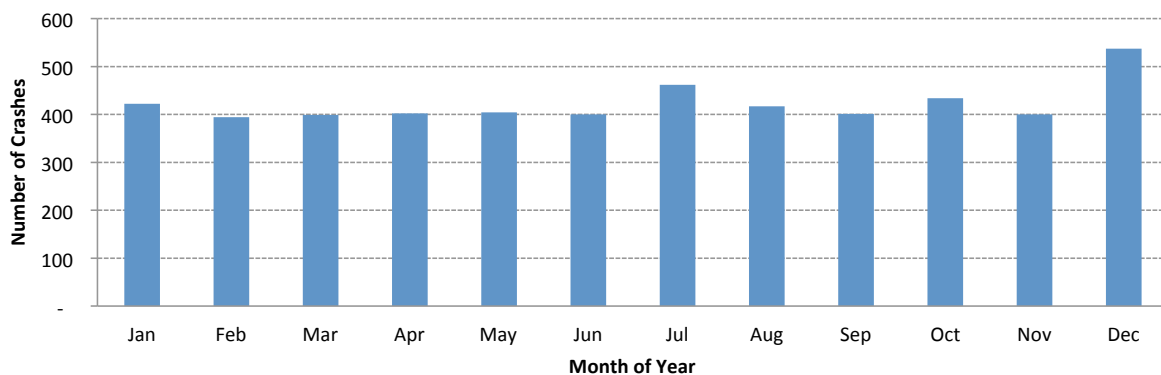
2012 Gender of Sober Drivers in Crashes with DUI Related Charges



- While female drivers were involved in 39.8% of the crashes where the other driver was charged with a DUI, they accounted for 47.2% of the total injuries.

2012 GENDER OF SOBER DRIVERS IN CRASHES WITH DUI RELATED CHARGES										
GENDER	UNKNOWN INJURY		NON-INJURED		INJURED		FATALITY		TOTAL	
	#	%	#	%	#	%	#	%	#	%
Female	-	0.0	695	38.5	94	47.2	4	28.6	793	39.3
Male	-	0.0	1,091	60.5	100	50.3	10	71.4	1,201	59.5
Unknown	1	100.0	18	1.0	5	2.5	-	0.0	24	1.2
TOTAL	1	100.0	1,804	100.0	199	100.0	14	100.0	2,018	100.0

2012 Crashes with DUI Related Charges by Month of Year

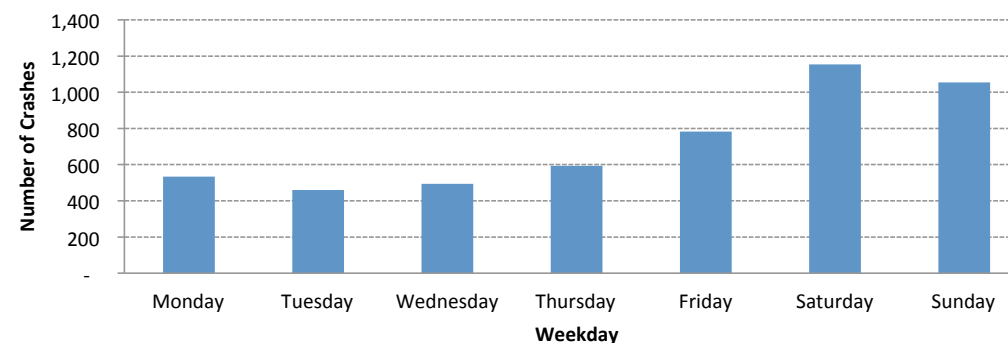


- In 2012, December, July, and October had the highest number of DUI related crashes respectively.
- February and March had the lowest number of DUI related crashes in 2012.

2007–2012 CRASHES WITH DUI RELATED CHARGES BY MONTH OF YEAR												
YEAR	JAN	FEB	MAR	APR	MAY	JUN	JUL	AUG	SEP	OCT	NOV	DEC
2007	400	377	423	421	402	456	445	427	428	465	419	483
2008	406	436	426	416	435	386	435	507	429	440	412	410
2009	382	243	170	271	398	391	415	420	405	447	403	398
2010	388	352	342	369	401	351	394	402	373	443	358	403
2011	382	324	350	413	418	423	458	447	464	441	384	432
2012	422	394	399	402	404	400	462	417	401	434	400	537

- Of all months observed over the six-year period, December 2012 had the highest number of DUI crashes.
- March 2009 saw the fewest number of DUI related crashes.
- Over the six-year period, the first months of the year saw fewer DUI related crashes than the summer and fall months.

2012 Crashes with DUI Related Charges by Day of Week

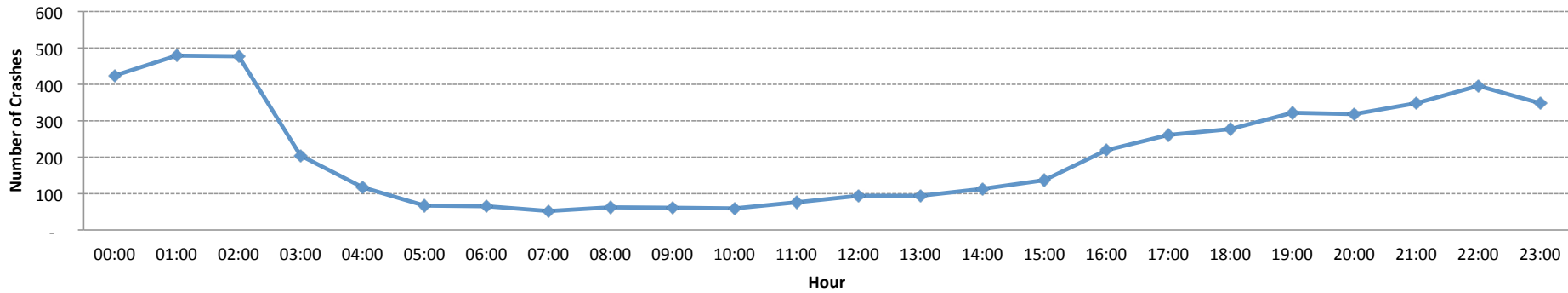


- In 2012 Saturdays had the most crashes with DUI related charges, and Tuesdays saw the fewest.

2007–2012 CRASHES WITH DUI RELATED CHARGES BY DAY OF WEE							
YEAR	MON	TUES	WED	THUR	FRI	SAT	SUN
2007	512	519	509	616	796	1,191	1,003
2008	517	450	545	599	818	1,199	1,010
2009	462	441	448	545	699	919	829
2010	455	452	472	560	727	990	920
2011	489	486	476	586	832	1,072	995
2012	534	459	494	593	783	1,154	1,055

- From 2007 to 2012 Fridays, Saturdays, and Sundays saw more DUI related crashes than Mondays, Tuesdays, and Wednesdays.
- Over the six-year period Tuesdays generally had the fewest DUI related crashes.
- From 2007 to 2012, Saturdays and Sundays (averaged) had more than twice the DUI crashes for Monday through Thursday (averaged).

2012 Crashes with DUI Related Charges by Hour of Day

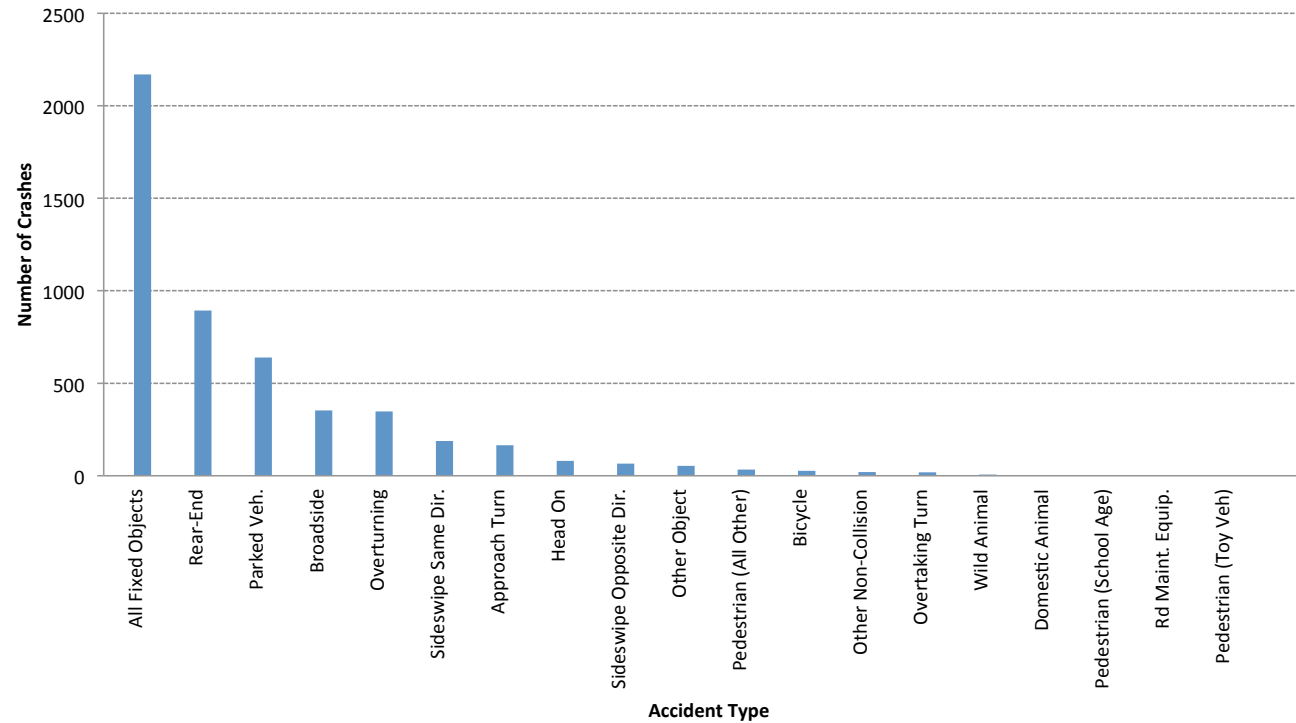


- 2012 followed the same general pattern as the preceding years. DUI related crashes increased in the afternoon hours until 2 AM and fell after last call.

2007–2012 CRASHES WITH DUI RELATED CHARGES BY HOUR OF DAY																								
YEAR	00:00	01:00	02:00	03:00	04:00	05:00	06:00	07:00	08:00	09:00	10:00	11:00	12:00	13:00	14:00	15:00	16:00	17:00	18:00	19:00	20:00	21:00	22:00	23:00
2007	434	478	498	198	120	56	58	60	57	53	56	73	93	94	108	159	197	277	293	308	326	367	384	392
2008	416	444	506	200	105	70	61	67	48	59	51	51	92	91	135	183	163	260	305	301	311	381	406	404
2009	331	366	391	168	83	57	49	55	43	48	52	49	76	107	117	122	184	224	269	249	301	335	318	339
2010	387	409	402	201	95	73	56	52	71	52	49	57	100	94	122	140	170	245	262	268	267	330	316	345
2011	392	425	458	212	132	93	64	67	49	57	59	74	80	95	99	166	196	276	265	306	292	351	361	358
2012	424	479	477	204	117	67	65	52	62	61	59	76	94	94	113	137	219	261	277	322	318	348	396	348

- Over the six-year period there was very little variation of crashes involving DUI charges by hour of day.
- Observation of DUI occurrence was higher in the evening and nighttime hours. Increasing from the afternoon (beginning 3 PM) into a peak in the early hours (1 AM to 2 AM) and dramatically decreasing from there.

2012 Accident Types of Crashes with DUI Related Charges



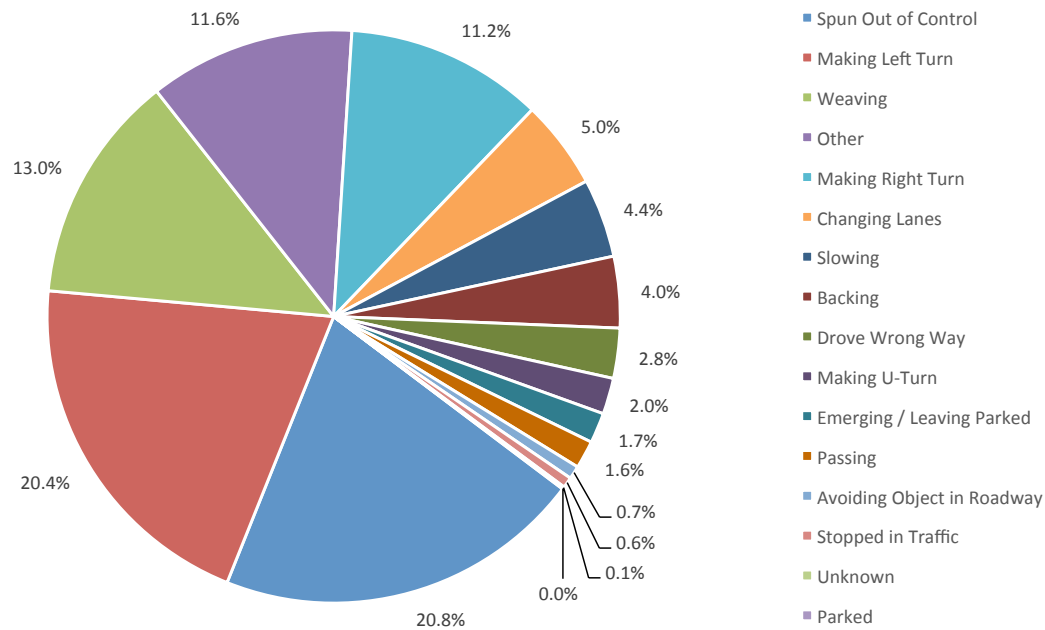
- Rear-end crashes contributed to nearly 18% of those with DUI related charges. Compared to overall 34% rear-end crashes of the total statewide crashes.
- While approach turn accounted for approximately 3% of all DUI related crashes, the accident type contributed to nearly 14% of related fatalities.
- Similarly, crashes attributed to overturning were nearly 7% of the total, but 13.7% of all injuries.
- When combined DUI related crashes involving fixed objects like fences, curbs, trees and signs accounted for approximately 43% of total crashes.

2012 ACCIDENT TYPES OF CRASHES WITH DUI RELATED CHARGES				
TYPE	PDO	INJURY	FATAL	TOTAL
Approach Turn	107	52	6	165
Barricade	8	2	-	10
Bicycle	10	14	3	27
Bridge Structure	8	6	1	15
Broadside	246	105	2	353
Cable Rail	22	1	-	23
Concrete Highway Barrier	91	37	-	128
Crash Cushion / Traffic Barrel	15	5	-	20
Culvert or Headwall	28	12	-	40
Curb	206	39	4	249
Delineator Post	31	17	-	48
Domestic Animal	2	2	-	4
Embankment	133	73	3	209

TYPE	PDO	INJURY	FATAL	TOTAL
Fence	194	50	1	245
Guard Rail	98	56	4	158
Head On	40	38	2	80
Large Rocks or Boulder	56	18	-	74
Light Pole / Utility Pole	172	55	-	227
Mailbox	27	4	1	32
Other Fixed Object	113	22	-	135
Other Non-Collision	14	6	-	20
Other Object	47	7	-	54
Overtaking Turn	16	3	-	19
Overtaking	172	170	6	348
Parked Motor Vehicle	546	91	2	639
Pedestrian (All Other)	10	19	5	34

TYPE	PDO	INJURY	FATAL	TOTAL
Pedestrian (Motorized Vehicle)	-	1	-	1
Pedestrian (School Age)	1	1	-	2
Railroad Crossing Equipment	4	1	-	5
Rear-End	744	148	1	893
Road Maintenance Equipment	2	-	-	2
Sideswipe Opposite Direction	49	17	-	66
Sideswipe Same Direction	165	23	-	188
Sign	186	46	-	232
Traffic Signal Pole	24	15	1	40
Tree	149	68	1	218
Vehicle Debris or Cargo	1	1	-	2
Wall or Building	43	17	-	60
Wild Animal	4	3	-	7
TOTAL	3,784	1,245	43	5,072

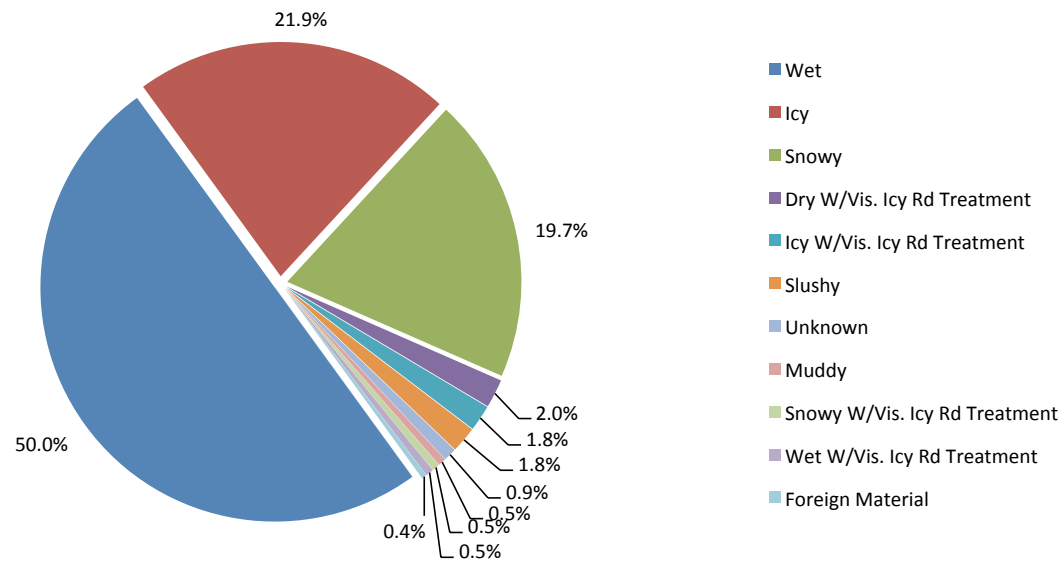
2012 Movement of At-Fault Driver with DUI Related Charges in Crashes (Other than Going Straight)



2012 MOVEMENT OF AT-FAULT DRIVER WITH DUI RELATED CHARGES IN CRASHES				
AT-FAULT DRIVER CHARGED WITH DUI	PDO	INJURY	FATAL	TOTAL
Going Straight	2,102	698	30	2,830
Spun Out of Control	292	153	4	449
Making Left Turn	340	96	4	440
Weaving	204	74	2	280
Other	173	77	1	251
Making Right Turn	204	37	-	241
Changing Lanes	90	18	-	108
Slowing	83	13	-	96
Backing	83	4	-	87
Drove Wrong Way	40	21	-	61
Making U-Turn	40	4	-	44
Emerging / Leaving Parked	34	3	-	37
Passing	22	12	-	34
Avoiding Object in Roadway	12	4	-	16
Stopped in Traffic	10	3	-	13
Unknown	1	1	-	2
Parked	-	1	-	1
TOTAL	3,730	1,219	41	4,990

- In 2012, in 56.7% of crashes caused by a driver charged with a DUI, that driver was going straight.
- Other than “going straight”, spinning out of control and left turns were the second and third most common movements of the at-fault driver charged with a DUI; at approximately 9% and 8.8% of total DUI related crashes respectively.

2012 Crashes with DUI Related Charges by Road Condition (Other than Dry)

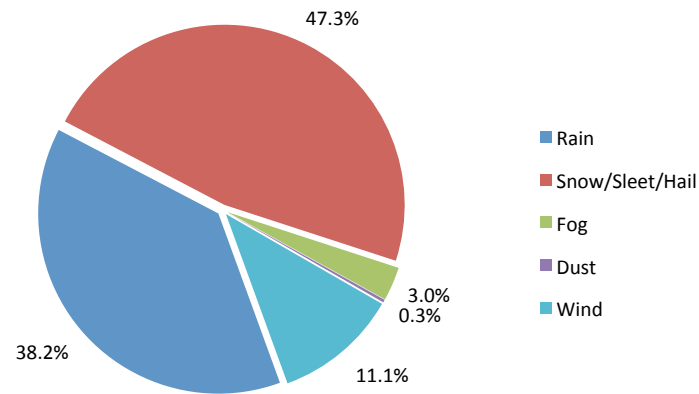


- In 50% of the crashes involving DUI charges that occurred during inclement weather, wet road conditions were observed.
- Icy roads contributed to 21.9% of DUI related crashes, snowy roads were to present for an additional 19.7%.

2012 CRASHES WITH DUI RELATED CHARGES BY ROAD CONDITION				
CONDITION	PDO	INJURY	FATAL	TOTAL
Dry	3,325	1,148	41	4,514
Wet	226	52	1	279
Icy	97	25	-	122
Snowy	97	13	-	110
Dry W/Vis. Icy Rd Treatment	10	1	-	11
Icy W/Vis. Icy Rd Treatment	7	2	1	10
Slushy	9	1	-	10
Unknown	4	1	-	5
Muddy	3	-	-	3
Snowy W/Vis. Icy Rd Treatment	3	-	-	3
Wet W/Vis. Icy Rd Treatment	3	-	-	3
Foreign Material	-	2	-	2
Slushy W/Vis. Icy Rd Treatment	-	-	-	-
TOTAL	3,784	1,245	43	5,072

- Dry road conditions were present in approximately 89% of DUI related crashes in 2012.
- Other than dry, wet, icy, and snowy road conditions were observed in 10% of the crashes with DUI related charges in 2012.

2012 Crashes with DUI Related Charges by Inclement Weather Conditions

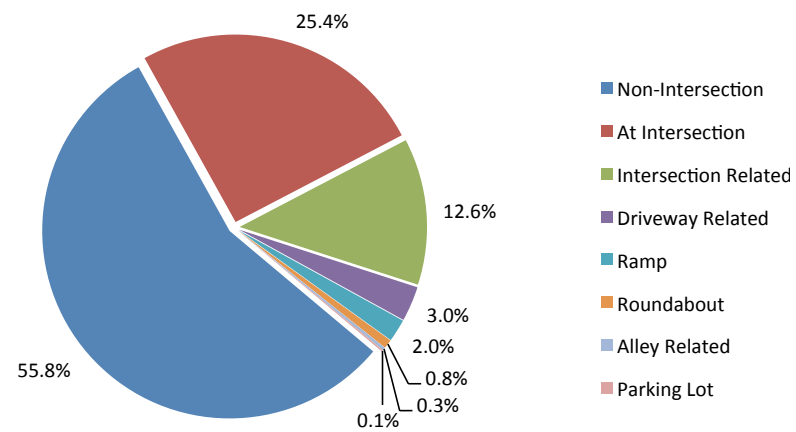


- Of those crashes that occurred during inclement weather, snow/sleet/hail contributed 47.3%.
- Rain was observed in 38.2% of crashes during inclement weather and wind in 11.1%.

2012 CRASHES WITH DUI RELATED CHARGES BY WEATHER CONDITIONS				
CONDITION	PDO	INJURY	FATAL	TOTAL
None	3,034	1,067	42	4,143
Rain	118	32	1	151
Snow/Sleet/Hail	156	31	-	187
Fog	10	2	-	12
Dust	1	-	-	1
Wind	34	10	-	44
Unknown	431	103	-	534
TOTAL	3,784	1,245	43	5,072

- The majority of DUI related crashes in 2012 occurred when no inclement weather conditions were present.

2012 Crashes with DUI Related Charges by Road Description



2012 CRASHES WITH DUI RELATED CHARGES BY ROAD DESCRIPTION				
ROAD	PDO	INJURY	FATAL	TOTAL
Non-Intersection	2,065	739	27	2,831
At Intersection	972	305	12	1,289
Intersection Related	501	139	1	641
Driveway Related	121	30	2	153
Ramp	78	20	1	99
Roundabout	33	6	-	39
Alley Related	9	4	-	13
Parking Lot	5	2	-	7
TOTAL	3,784	1,245	43	5,072

- Nearly 56% of crashes with related DUI charges occurred in non-intersections.
- Approximately 38% of DUI related crashes occurred either at or involved an intersection.