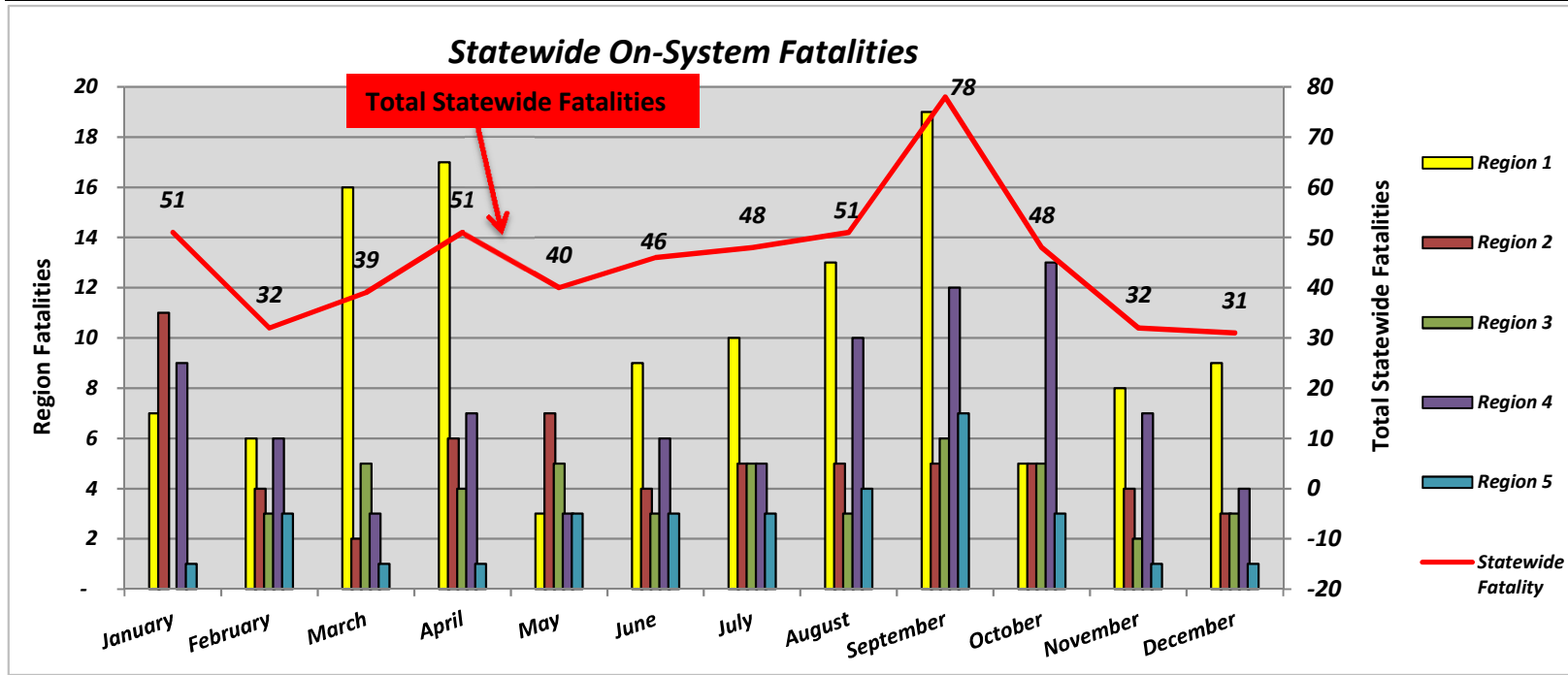


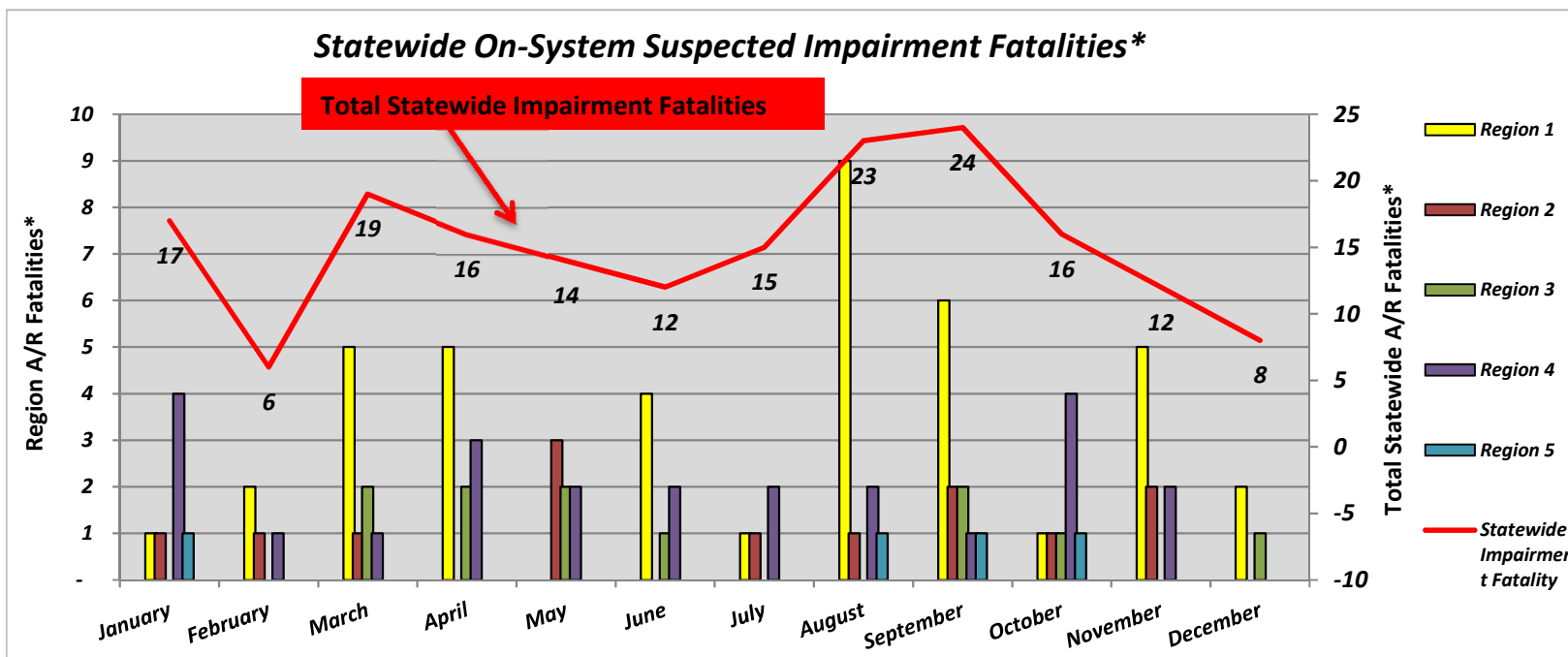
2015 Fatalities

Statewide Fatalities											
Crash Month	Region 1		Region 2		Region 3		Region 4		Region 5		Statewide Fatalities
	On-System	Off-System	On-System	Off-System	On-System	Off-System	On-System	Off-System	On-System	Off-System	
January	7	9	11	2	-	6	9	6	1	-	51
February	6	3	4	3	3	-	6	3	3	1	32
March	16	11	2	-	5	-	3	1	1	-	39
April	17	3	6	3	4	-	7	8	1	2	51
May	3	11	7	4	5	3	3	1	3	-	40
June	9	8	4	4	3	1	6	6	3	2	46
July	10	9	5	3	5	3	5	4	3	1	48
August	13	10	5	-	3	1	10	5	4	-	51
September	19	9	5	8	6	5	12	6	7	1	78
October	5	12	5	3	5	-	13	2	3	-	48
November	8	3	4	1	2	-	7	4	1	2	32
December	9	3	3	3	3	3	4	2	1	-	31
Total	122	91	61	34	44	22	85	48	31	9	547



2015 Fatalities

Statewide Suspected Impairment Fatalities*											
Crash Month	Region 1		Region 2		Region 3		Region 4		Region 5		Statewide Impairment Fatalities
	On-System	Off-System	On-System	Off-System	On-System	Off-System	On-System	Off-System	On-System	Off-System	
January	1	3	1	2	-	4	4	1	1	-	17
February	2	-	1	1	-	-	1	-	-	1	6
March	5	10	1	-	2	-	1	-	-	-	19
April	5	1	-	2	2	-	3	3	-	-	16
May	-	4	3	2	2	1	2	-	-	-	14
June	4	3	-	-	1	-	2	1	-	1	12
July	1	6	1	2	-	2	2	1	-	-	15
August	9	7	1	-	-	-	2	3	1	-	23
September	6	3	2	6	2	1	1	2	1	-	24
October	1	5	1	3	1	-	4	-	1	-	16
November	5	1	2	-	-	-	2	-	-	2	12
December	2	1	-	2	1	1	-	1	-	-	8
Total	41	44	13	20	11	9	24	12	4	4	182



*Preliminary (as of the date of this Report, subject to confirmation by Toxicology Report by the State's Coroners)