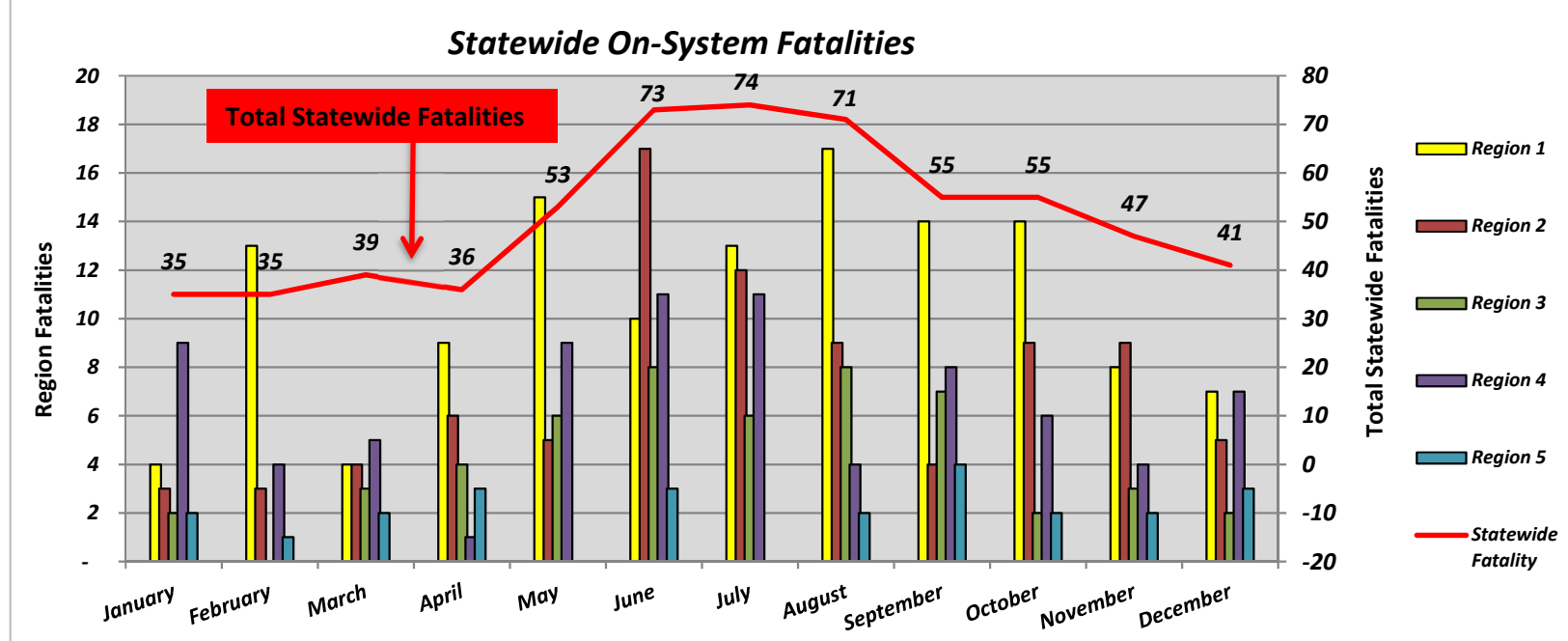
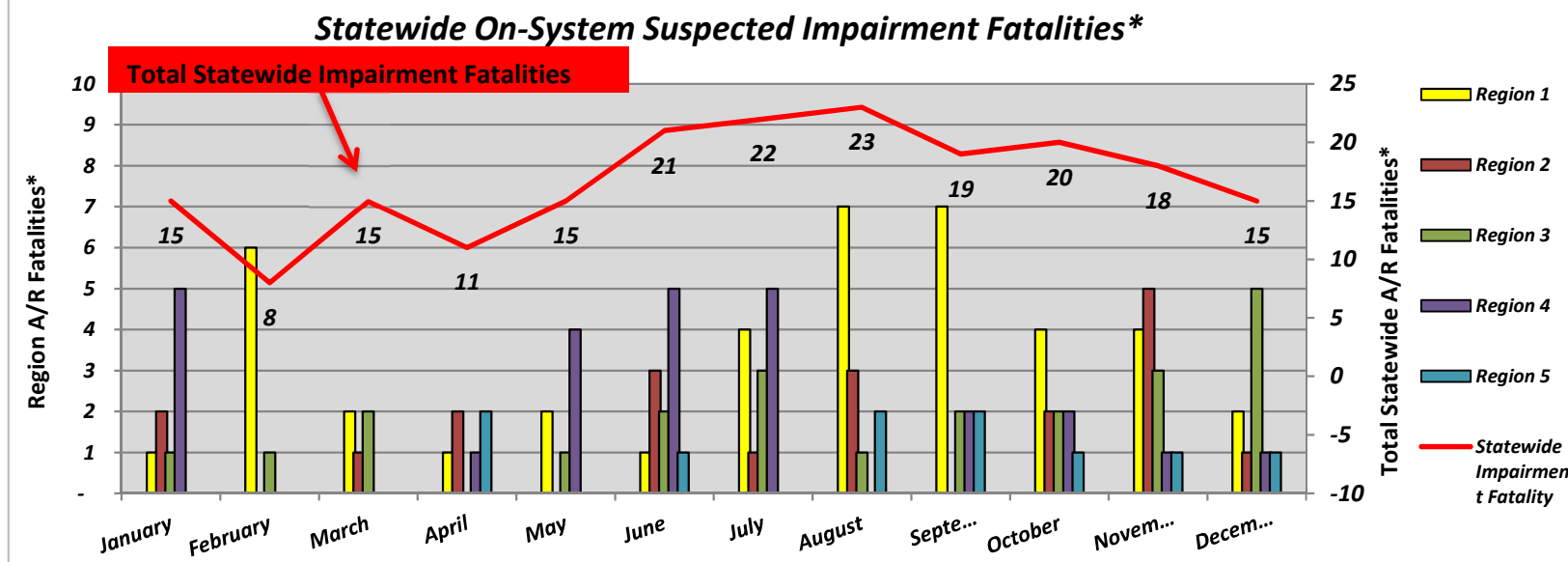




Statewide Fatalities											
Crash Month	Region 1		Region 2		Region 3		Region 4		Region 5		Statewide Fatalities
	On-System	Off-System	On-System	Off-System	On-System	Off-System	On-System	Off-System	On-System	Off-System	
January	4	5	3	4	2	-	9	5	2	1	35
February	13	5	3	4	-	1	4	4	1	-	35
March	4	11	4	3	3	1	5	4	2	2	39
April	9	4	6	1	4	-	1	8	3	-	36
May	15	7	5	7	6	-	9	4	-	-	53
June	10	7	17	10	8	3	11	4	3	-	73
July	13	13	12	9	6	3	11	6	-	1	74
August	17	15	9	9	8	2	4	5	2	-	71
September	14	9	4	4	7	1	8	4	4	-	55
October	14	10	9	8	2	3	6	1	2	-	55
November	8	6	9	6	3	1	4	8	2	-	47
December	7	8	5	4	2	1	7	4	3	-	41
Total	128	100	86	69	51	16	79	57	24	4	614



Statewide Suspected Impairment Fatalities*											
Crash Month	Region 1		Region 2		Region 3		Region 4		Region 5		Statewide Impairment Fatalities
	On-System	Off-System	On-System	Off-System	On-System	Off-System	On-System	Off-System	On-System	Off-System	
January	1	-	2	3	1	-	5	2	-	1	15
February	6	-	-	-	1	1	-	-	-	-	8
March	2	7	1	-	2	-	-	3	-	-	15
April	1	-	2	1	-	-	1	4	2	-	11
May	2	5	-	2	1	-	4	1	-	-	15
June	1	1	3	4	2	3	5	1	1	-	21
July	4	5	1	2	3	1	5	-	-	1	22
August	7	5	3	3	1	1	-	1	2	-	23
September	7	2	-	-	2	1	2	3	2	-	19
October	4	4	2	2	2	3	2	-	1	-	20
November	4	1	5	-	3	-	1	3	1	-	18
December	2	3	1	1	5	1	1	-	1	-	15
Total	41	33	20	18	23	11	26	18	10	2	202



*Preliminary (as of the date of this Report, subject to confirmation by Toxicology Report by the State's Coroners)