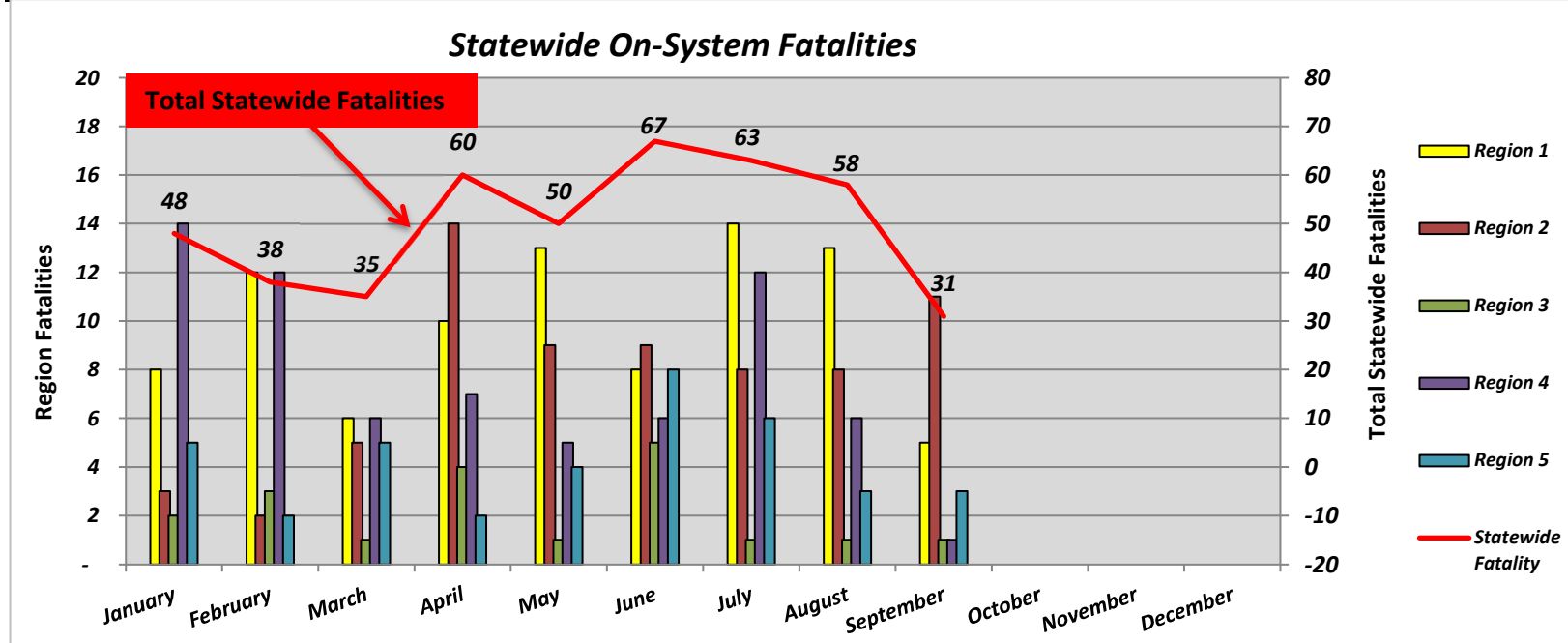
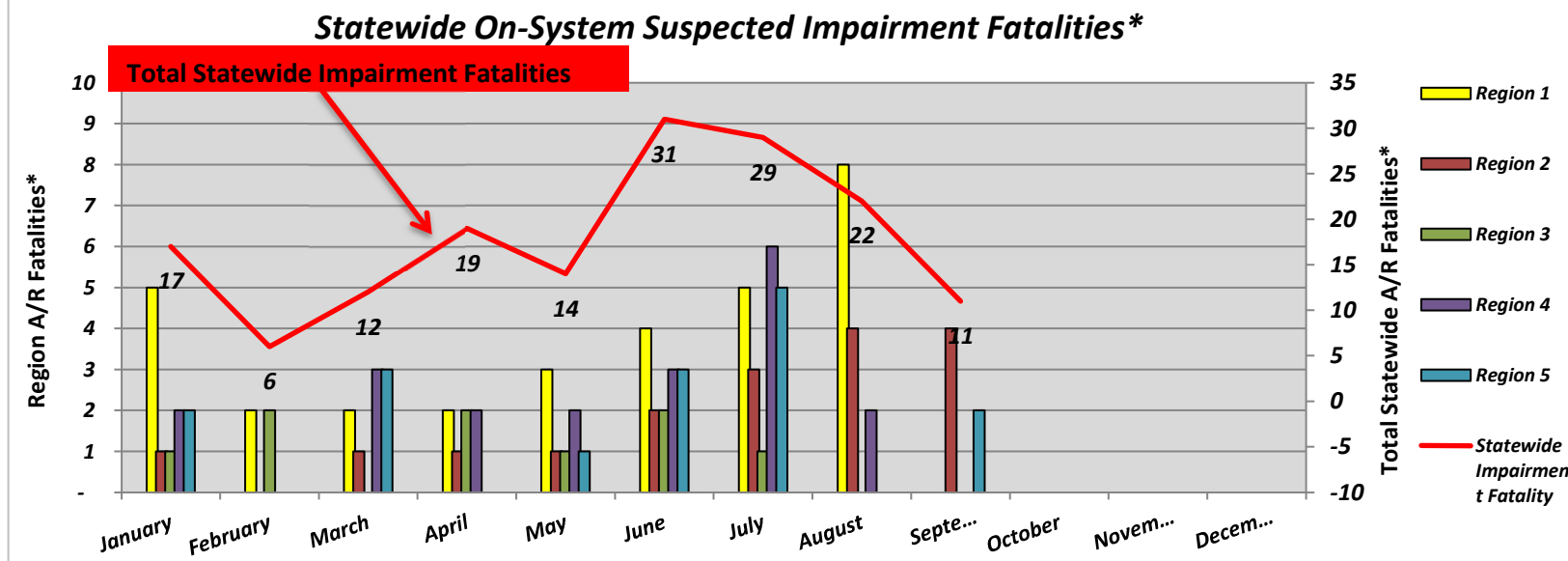


Statewide Fatalities											
Crash Month	Region 1		Region 2		Region 3		Region 4		Region 5		Statewide Fatalities
	On-System	Off-System	On-System	Off-System	On-System	Off-System	On-System	Off-System	On-System	Off-System	
January	8	10	3	4	2	-	14	1	5	1	48
February	12	3	2	3	3	-	12	1	2	-	38
March	6	8	5	3	1	-	6	1	5	-	35
April	10	10	14	5	4	-	7	7	2	1	60
May	13	8	9	1	1	3	5	6	4	-	50
June	8	12	9	9	5	2	6	7	8	1	67
July	14	12	8	4	1	1	12	4	6	1	63
August	13	13	8	9	1	1	6	2	3	2	58
September	5	6	11	2	1	1	1	1	3	-	31
October	-	-	-	-	-	-	-	-	-	-	
November	-	-	-	-	-	-	-	-	-	-	
December	-	-	-	-	-	-	-	-	-	-	
Total	89	82	69	40	19	8	69	30	38	6	450



Statewide Suspected Impairment Fatalities*												
Crash Month	Region 1		Region 2		Region 3		Region 4		Region 5		Statewide Impairment Fatalities	
	On-System	Off-System	On-System	Off-System	On-System	Off-System	On-System	Off-System	On-System	Off-System		
January	5	4	1	2	1	-	2	-	2	-	17	
February	2	1	-	-	2	1	-	-	-	-	6	
March	2	3	1	-	-	-	3	-	3	-	12	
April	2	5	1	4	2	-	2	2	-	1	19	
May	3	5	1	-	1	1	2	-	1	-	14	
June	4	7	2	6	2	2	3	2	3	-	31	
July	5	7	3	1	1	-	6	1	5	-	29	
August	8	3	4	1	-	1	2	2	-	1	22	
September	-	3	4	1	-	1	-	-	2	-	11	
October	-	-	-	-	-	-	-	-	-	-		
November	-	-	-	-	-	-	-	-	-	-		
December	-	-	-	-	-	-	-	-	-	-		
Total	31	38	17	15	9	6	20	7	16	2	161	



*Preliminary (as of the date of this Report, subject to confirmation by Toxicology Report by the State's Coroners)