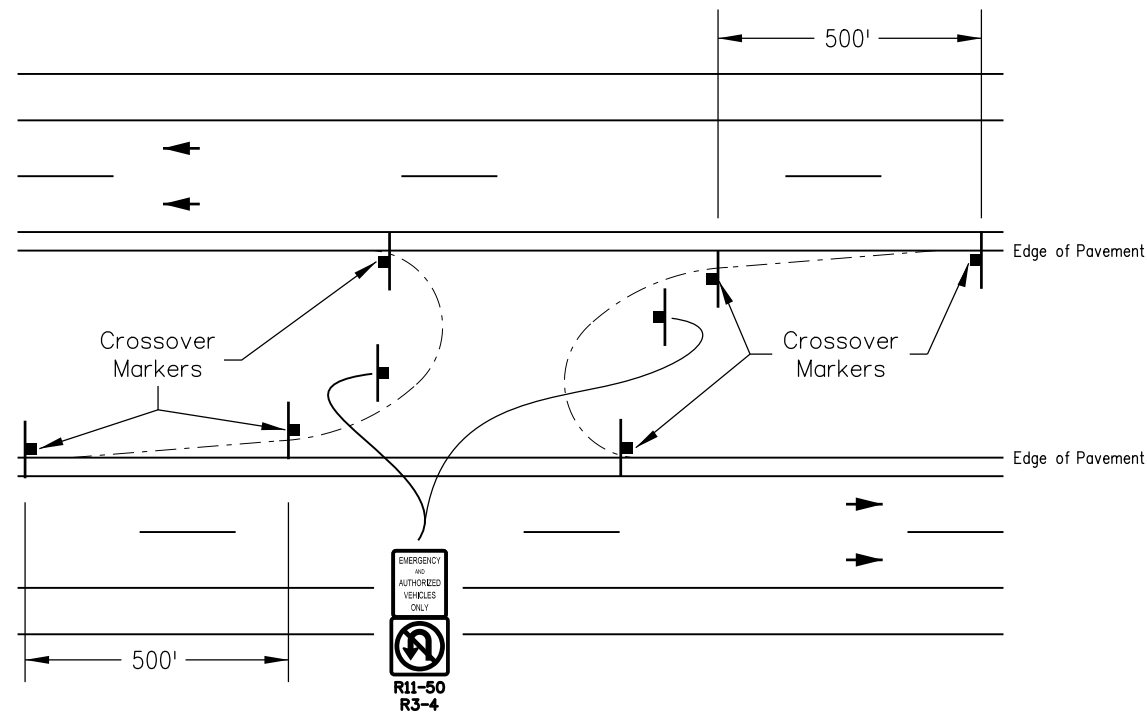
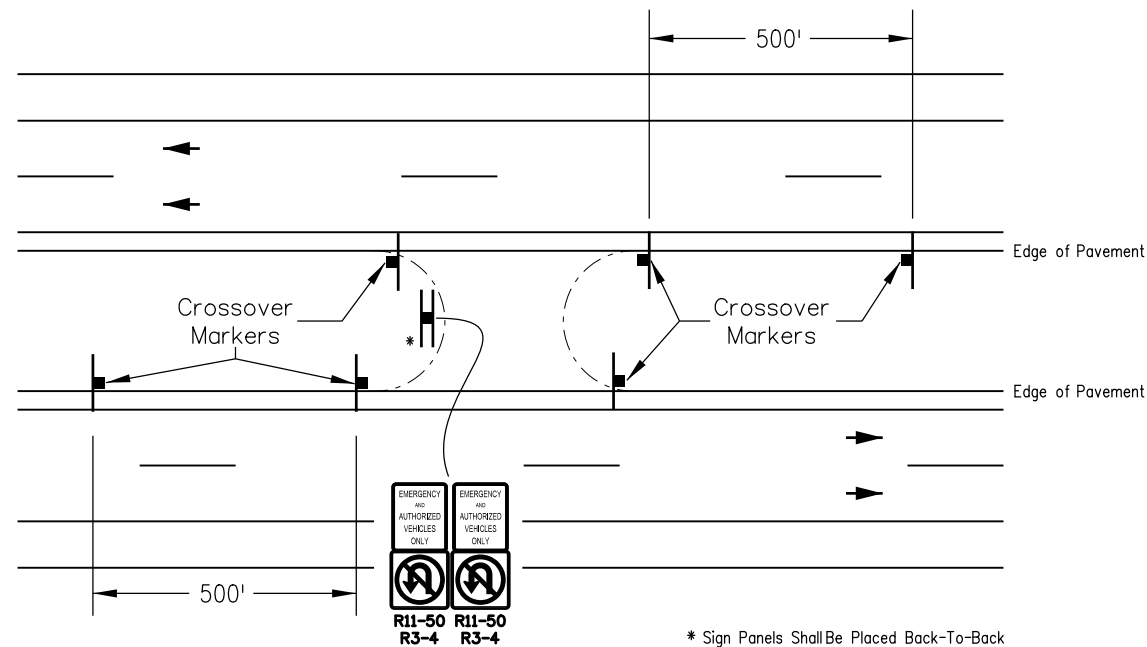


GENERAL NOTES

- SEE STANDARD M-203-1 FOR TYPICAL MEDIAN CROSSOVER DIMENSIONS.
- MOUNTING HEIGHT TO BOTTOM OF R11-50 "EMERGENCY AND AUTHORIZED VEHICLES ONLY" & R3-4 "NO U-TURN (SYMBOL)" SIGNS SHALL BE 7 FEET FROM ORIGINAL GROUND.
- FOR VISUALLY CONSTRAINED MEDIAN CROSSOVERS, MULTIPLE SIGN PANELS (R3-4 AND R11-50) MAY NEED TO BE PLACED WITHIN THE CROSSOVER ON SEPARATE POSTS, AS SHOWN IN THE PLANS AND/OR DIRECTED BY THE ENGINEER.
- PLACE SIX (6) CROSSOVER MARKERS, ONE 500 FEET IN ADVANCE OF MEDIAN CROSSOVER AND ONE ON EACH SIDE OF CROSSOVER AS SHOWN ON DETAIL.
- CROSSOVER MARKERS SHALL BE LOCATED IN-LINE WITH DELINEATOR POSTS.
- SEE TUBULAR STEEL SIGN SUPPORT DETAILS (S-614-8, SHEET 1 OF 6) FOR CONCRETE FOOTING INFORMATION FOR BOTH DRIVEABLE AND SOCKET INSTALLATIONS AND ADDITIONAL POST INSTALLATION REQUIREMENTS.
- MEDIAN CROSSOVER DELINEATORS SHALL FOLLOW THE REQUIREMENTS OUTLINED IN CDOT'S "STANDARD SPECIFICATIONS FOR ROAD AND BRIDGE CONSTRUCTION" PROJECT SPECIAL PROVISION 612.

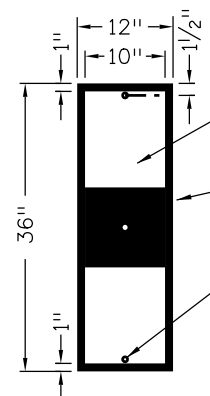


MEDIAN WIDTH GREATER THAN 50 FT.



MEDIAN WIDTH LESS THAN 50 FT.

* Sign Panels Shall Be Placed Back-To-Back



SIGN PANEL

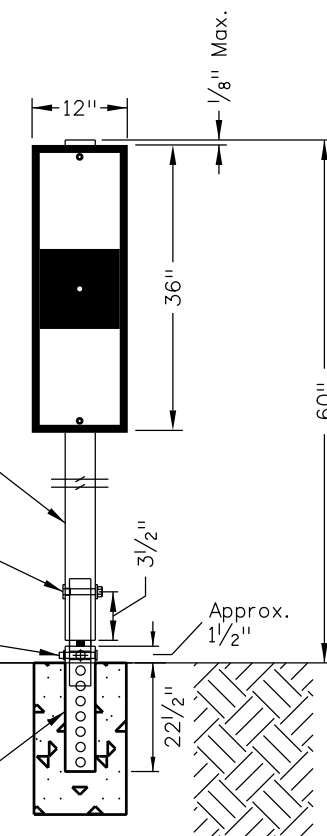
10" x 12" Blue Reflective Sheeting (Type IV) (Typ. 2 EA)
 Class I Sign Panel w/ Black Background Sheeting
 5/16" x 2 3/4" Flange Bolt, Nylon Washer & Flange Lock Nut (Typ. 3 EA)

2 1/4" O.D. Linear Low Density Polypropylene Blend Black Post

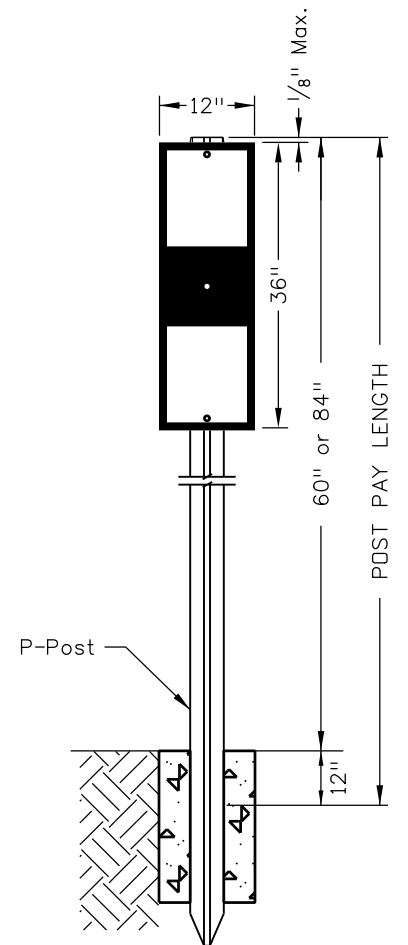
5/16" x 2 3/4" Flange Bolt & Flange Lock Nut

3/8" x 2 1/4" Clevis Pin & Hairpin Cotter

2" x 12 GA. x 24" Square Perforated Tubing



DRIVEABLE



SOCKET

MEDIAN CROSSOVER INSTALLATIONS

Computer File Information		Sheet Revisions		Colorado Department of Transportation		As Constructed		TYPICAL DETAIL DELINEATOR INSTALLATIONS		Project No./Code	
Creation Date: 03/01/12	Initials: SCL	Date:	Comments	4201 East Arkansas Avenue Denver, Colorado 80222 Phone: 303-757-9543 FAX: 303-757-9219	No Revisions:	Designer: Detailer: Sheet Subset:		Structure Numbers Subset Sheets: of		XXX-XXXX	
Last Modification Date: 09/21/17	Initials: NNC	12/11/14	ADDED DISTANCE FROM GROUND TO BOTTOM OF MARKER		Revised:					XXXXX	
Full Path: codot.gov/library/traffic/traffic-standards/traffic-typical-details		09/21/17	ADDED DRIVEABLE INSTALL METHOD & R3-4 SIGNS, UPDATED NOTES		Void:					Sheet Number	
Drawing File Name: DS-612-01.dgn				Safety & Traffic Engineering	KCM						
CAD Ver.: MicroStation V8i	Scale: Not to Scale	Units: English									