

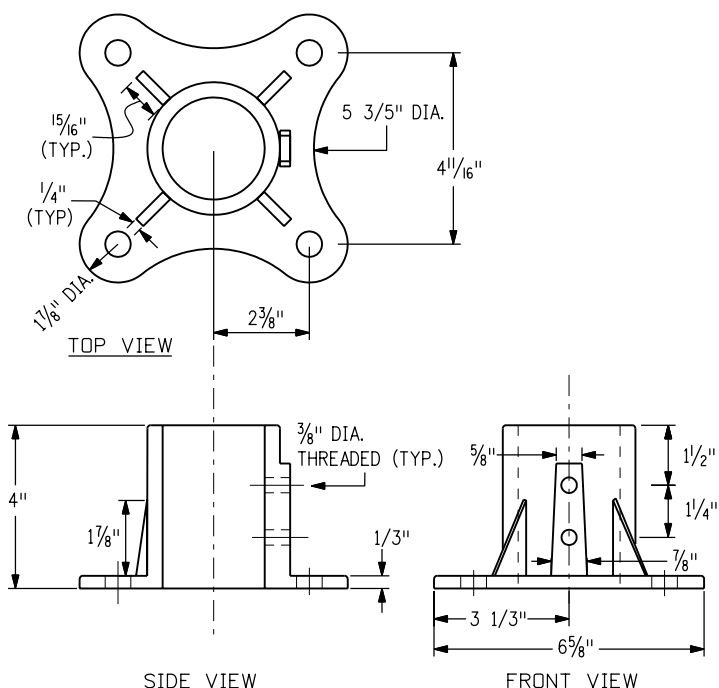
TYP. ELEVATION

POST SELECTION TABLE
(90 MPH WIND LOAD DESIGN)

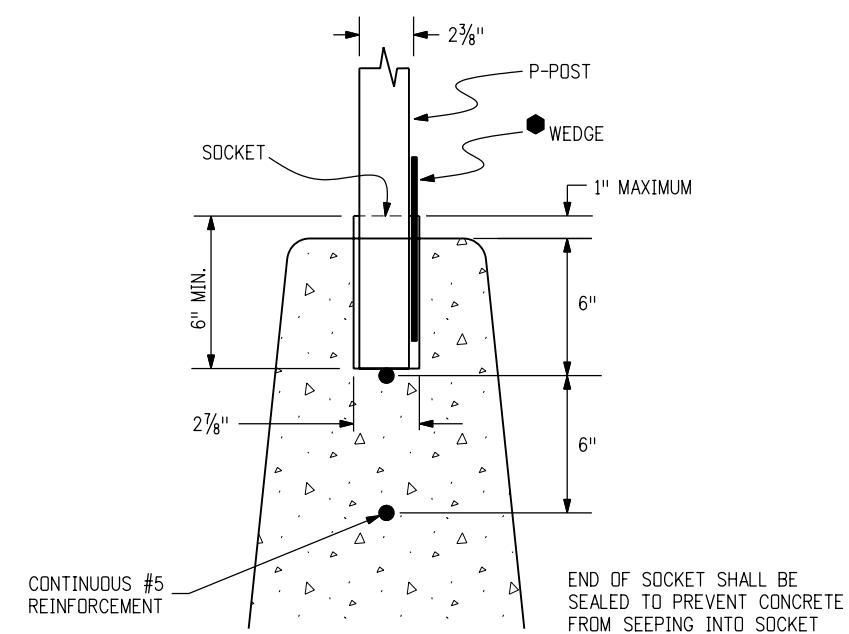
SIGN PANEL HEIGHT	SIGN PANEL WIDTH							
	1'-6"	2'-0"	2'-6"	3'-0"	3'-6"	4'-0"	4'-6"	5'-0"
1'-6"	P	P	P	P	P	P	P1	P1
2'-0"	P	P	P	P	P	P	P1	P1
2'-6"	P	P	P	P	P1	P1	P1	P1
3'-0"	P	P	P	P	P1	P1	P1	P1
3'-6"	P	P	P1	P1	P1	P1	P1	P1
4'-0"	P	P	P1	P1	P1	P1	P1	P1
4'-6"	P1	P1	P1	P1	P1	P1	P1	P1
5'-0"	P1	P1	P1	P1	P1	P1	P1	P1
5'-6"	P1	P1	P1	P1	P1	P1	P1	P1
6'-0"	P1	P1	P1	P1	P1	P1	P1	P1
6'-6"	P1	P1	P1	P1	P1	P1	P1	P1
7'-0"	P1	P1	P1	P1	P1	P1	P2	P2
7'-6"	P1	P1	P1	P1	P2	P2	P2	P2
8'-0"	P1	P1	P1	P1	P2	P2	P2	P2

DIAMOND PANELS (30", 36" AND 48" SIDES) - P1

POST TYPE	P	P1	P2	FOR DETAILED POST SPECIFICATIONS SEE STANDARD PLAN S-614-8
OUTSIDE DIAMETER	2.375"	2.875"	2.875"	
WALL THICKNESS	0.080"	0.160"	0.276"	



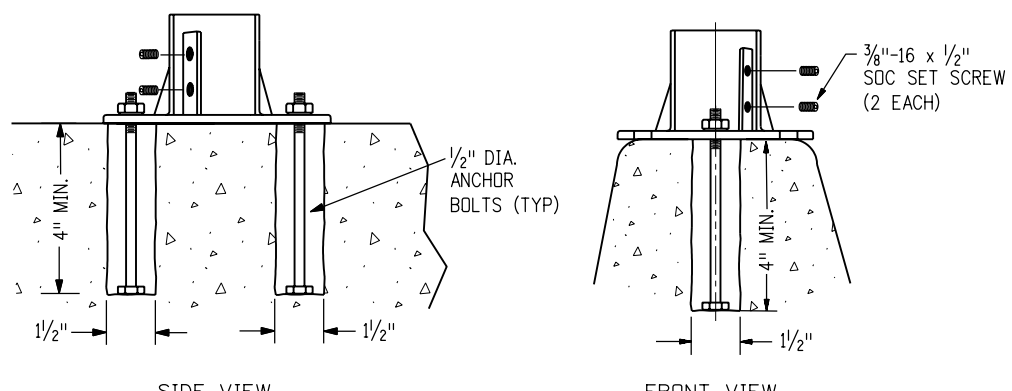
SURFACE MOUNT CASTING DETAIL



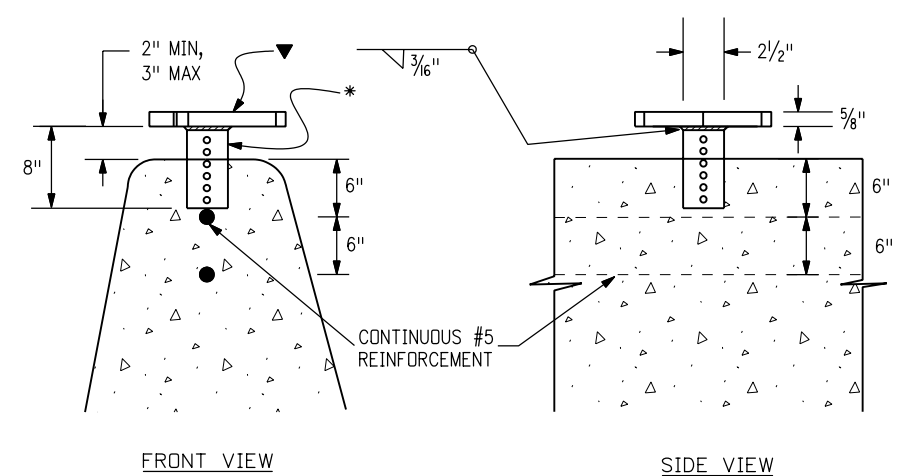
SOCKET SYSTEM (P POST ONLY)

GENERAL NOTES

- FOR DETAILS OF GUARD RAIL-TYPE 7 CONCRETE BARRIER (CAST-IN-PLACE AND/OR PRECAST), SEE STANDARD PLANS M-606-13 AND M-606-14.
- FOR SIGN PANEL FABRICATION DETAILS, SEE STANDARD PLANS S-614-2, S-614-3 AND S-614-4.
- SOCKET SYSTEMS AND SLIP BASES SHALL BE ASSEMBLED ACCORDING TO STANDARD PLAN S-614-8.
- BARRIER WALLS SHALL BE SUPPORTED TO PREVENT DEFORMATION DURING PLACEMENT OF SLIPBASE STUB OR SOCKET ON CAST-IN-PLACE INSTALLATIONS.
- THE ENGINEER SHALL ESTABLISH LOCATIONS FOR ALL SIGN POSTS IN ACCORDANCE WITH DETAILS SHOWN ON THE PLANS.
- ALL SIGN POSTS SHALL BE MOUNTED PLUMB.
- BOLTS, NUTS, WASHERS AND ANCHOR BOLTS SHALL CONFORM TO ASTM A307. THEY SHALL ALL BE GALVANIZED IN ACCORDANCE WITH ASTM A153 OR ASTM A164.
- ALL STEEL CUTS SHALL PREFERABLY BE SAW CUTS; HOWEVER, FLAME CUTTING WILL BE PERMITTED PROVIDED ALL EDGES ARE GROUND.
- MOUNTING SYSTEM FOR EACH SIGN LOCATION SHALL BE AS SHOWN ON THE PLANS.
- ALL WELDING IS TO BE IN ACCORDANCE WITH AWS SPECIFICATIONS OF CURRENT ISSUE AND SHALL BE CONTINUOUS.
- ANCHOR BOLTS FOR RETRO-FIT INSTALLATION MAY BE "HEADED" BOLTS OR "ALL THREAD" ROD WITH HEX HEAD NUT AND LOCKWASHER (DRILLED AND FILLED WITH APPROVED EPOXY GROUT IN 2 IN. HOLES FOR 7/8 IN., AND 1/2 IN. HOLES FOR 1/2 IN.).
- RETRO-FIT INSTALLATION PROCEDURE SHALL NOT BE USED ON NEW CONSTRUCTION WITHOUT APPROVAL OF THE ENGINEER.

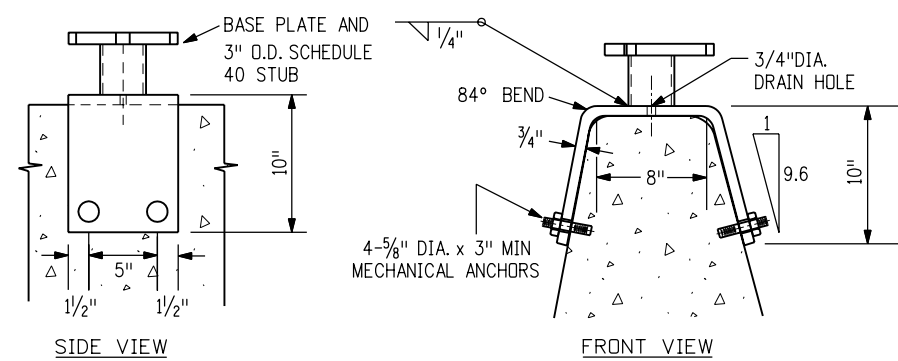


SURFACE MOUNT CASTING (P POST ONLY)



- BASE PLATE SHALL BE 5/8" ASTM A-36, 441 OR 572 STEEL PLATE. SEE STANDARD PLAN S-614-8 FOR DIMENSIONS.
- BASE STUB SHALL BE 2 1/2" SQUARE 10 GAGE PERFORATED TUBING, FABRICATED AND GALVANIZED CONFORMING TO ASTM A-153

SLIPBASE BARRIER STUB (P1 & P2 POSTS)



SADDLE BRACKET (P1 & P2 POSTS)

RETRO-FIT CONCRETE BARRIER INSTALLATION

CAST-IN-PLACE CONCRETE BARRIER INSTALLATION

Computer File Information		Sheet Revisions		Colorado Department of Transportation 4201 East Arkansas Avenue Denver, Colorado 80222 Phone: (303) 757-9543 Fax: (303) 757-9458 Safety & Traffic Engineering Branch	CONCRETE BARRIER SIGN POST INSTALLATIONS	STANDARD PLAN NO. S-614-21 Sheet No. 1 of 1
Creation Date: 07/04/06	Initials: KCM	Date:	Comments:			
Last Modification Date: 01/08/09	Initials: SCL					
Full Path: www.dot.state.co.us/DesignSupport/				KCM/JSW	Issued By: Safety & Traffic Engineering Branch July 4, 2006	
Drawing File Name: Sheet_S-614-21_1of1.dgn						
CAD Ver.: MicroStation V8	Scale: Not to Scale	Units: English				