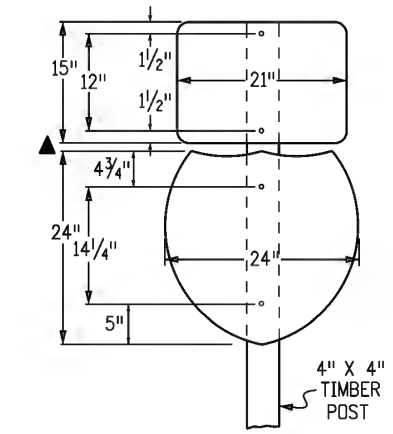
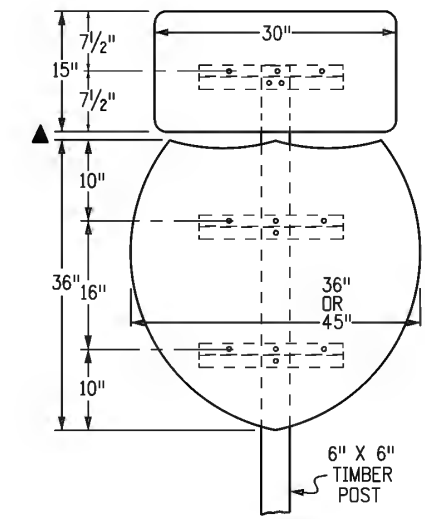
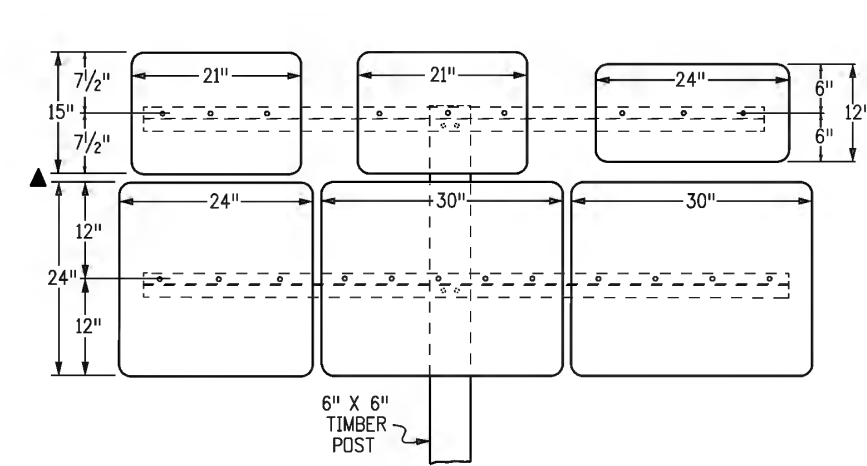
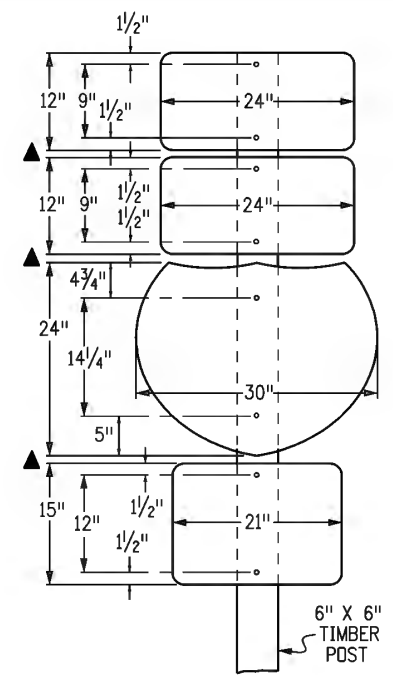
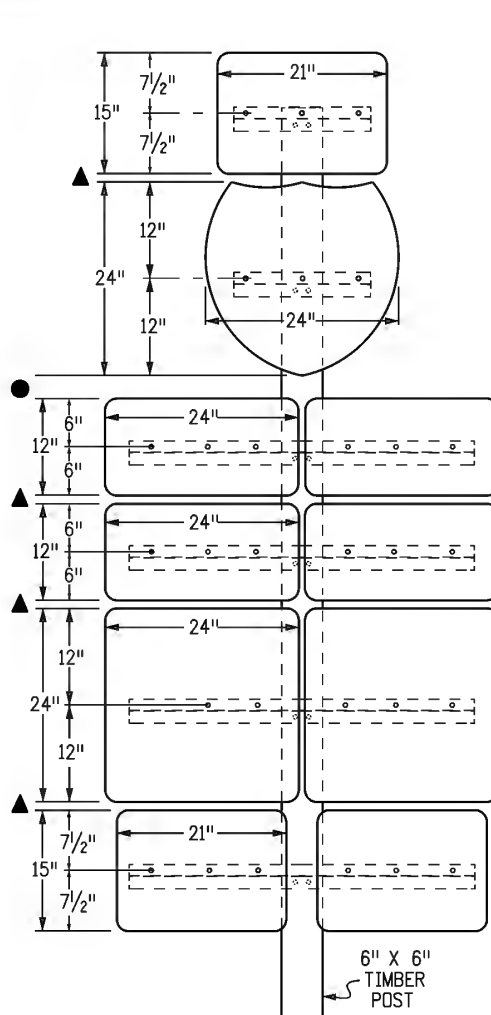


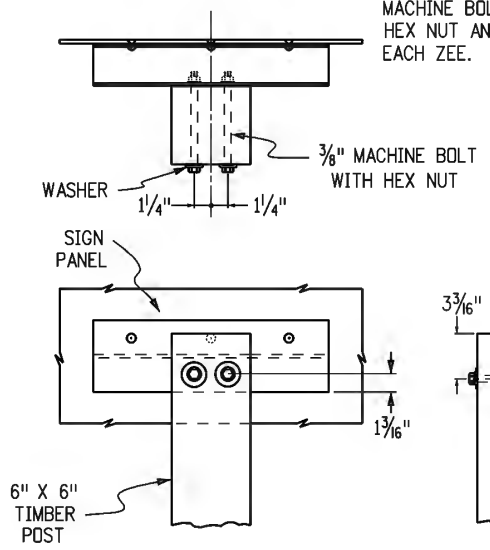
GENERAL NOTES

1. TIMBER SIGN POSTS MAY ONLY BE USED FOR TEMPORARY SIGNANCE DURING CONSTRUCTION. TUBULAR STEEL SHALL BE USED FOR PERMANENT INSTALLATION.
2. FOR SIGN PLACEMENT, SEE STANDARD PLAN S-614-1.
3. FOR TUBULAR STEEL POST INFORMATION, SEE STANDARD PLAN S-614-8.
4. ROUTE MARKERS SHALL BE SINGLE SHEET ALUMINUM, 0.100 INCH MINIMUM THICKNESS.
5. BACKING ZEES ARE 3-INCH X 2-INCH X 1/16-INCH 2.33 6061-T6 ALUMINUM ALLOY WEIGHING 2.33 POUNDS PER FOOT.
6. ALL SIGNS SHALL BE FABRICATED USING RETRO-REFLECTIVE SHEETING CONFORMING TO ASTM D4956. THE TYPE SHALL BE AS DESCRIBED IN THE STANDARD SPECIFICATIONS AND/OR AS SHOWN ON THE PLANS.
- ▲ 7. VERTICAL SPACING BETWEEN PANELS SHALL BE 1 INCH MINIMUM TO 1-1/2 INCH MAXIMUM.
- 8. VERTICAL SPACING BETWEEN GROUPS OF PANELS SHALL BE 4 INCH
9. BOLTS, NUTS, AND METAL WASHERS SHALL BE GALVANIZED OR CADMIUM PLATED.
10. Z-BAR LENGTH AND HOLE SPACING FOR AUXILIARY MARKERS TO BE THE SAME AS FOR CORRESPONDING ROUTE MARKERS.
11. WASHERS ON TIMBER POSTS SHALL BE 1 INCH DIAMETER.

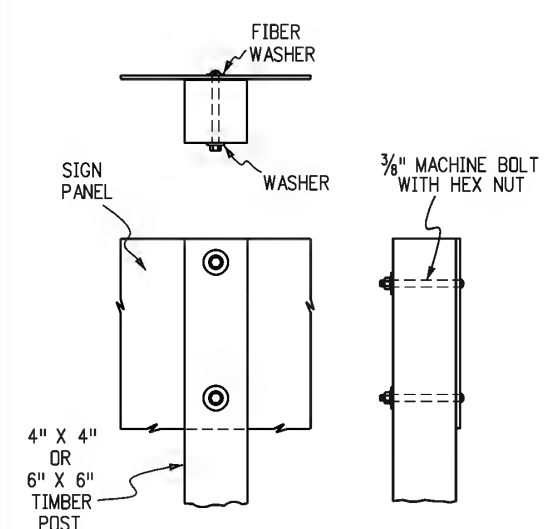
PANEL COMBINATIONS	ZEE LENGTH	NOTES:
21", 24", 30", 36", 45"	*	1. HOLE SPACING SHALL BE COUNTED FROM LEFT TO RIGHT LOOKING AT THE BACK OF SIGN WITH FIRST AND LAST HOLES 2-INCHES FROM EDGE OF THE Z-BAR. HOLES IN-BETWEEN SHALL BE 6-INCHES TO 8-INCHES APART. 2. * Z-BAR LENGTH SHALL BE 3-INCHES (± 1/2-INCH) SHORT OF THE EDGE OF THE SIGN ON BOTH SIDES. 3. SUPPLEMENTAL PANELS SHALL BE CENTERED RELATIVE TO THE PRIMARY PANELS. Z-BAR LENGTHS FOR SUPPLEMENTAL PANEL GROUPS MAY BE ADJUSTED TO FIT.
24" & 24"	43"	
24" & 30"	49"	
30" & 30"	55"	
36" & 36"	67"	
45" & 36"	76"	
24" & 24" & 24"	68"	
24" & 24" & 30"	74"	
24" & 30" & 24"	74"	
30" & 24" & 30"	80"	
24" & 30" & 30"	80"	
30" & 30" & 30"	86"	



FOR SINGLE POST SIGNS WITH TWO BACKING ZEES, USE ONE 5/8" MACHINE BOLT WITH WASHER AND HEX NUT AND LOCK WASHER AT EACH ZEE.



3/8" 90° COUNTERSUNK ALUMINUM LOCKBOLT FASTENERS (NO. 4 THRU NO. 10 AS REQUIRED). EXPOSED LOCKBOLT FASTENER HEADS ON THE FACE OF THE SIGN SHALL BE REFLECTORIZED TO MATCH THE SURROUNDING COLOR.



CLASS I MARKER ASSEMBLY INSTALLATION

CLASS II MARKER ASSEMBLY INSTALLATION

Computer File Information
Creation Date: 07/04/12
Created By: Nakao
Last Modification Date:
Last Modified By:
CAD Ver.: MicroStation V8 Scale: Not to Scale Units: English

Sheet Revisions
Date: Comments

Colorado Department of Transportation
 2829 W. Howard Pl.
 Denver, CO 80204
 Phone: 303-757-9436
 FAX: 303-757-9219

Traffic & Safety Engineering MKB

MARKER ASSEMBLY INSTALLATIONS

Issued By: Traffic & Safety Engineering Branch July 31, 2019

STANDARD PLAN NO.
 S-614-10
Standard Sheet No. 1 of 1
 Project Sheet Number: