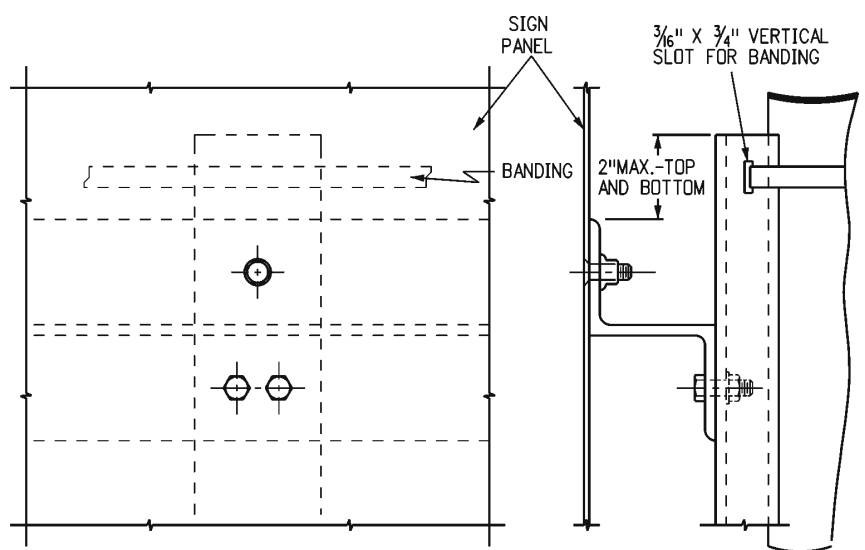


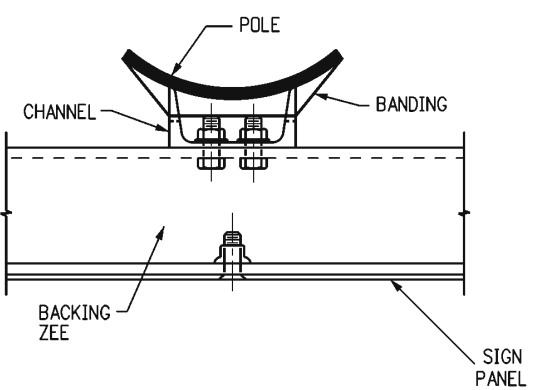
**GENERAL NOTES**

- SIGNS SHALL BE LOCATED IN ACCORDANCE WITH THE DETAILS SHOWN ON THE PLANS. SPECIAL CARE SHALL BE TAKEN TO ENSURE AN UNOBSTRUCTED VIEW OF EACH SIGN.
- BRAND-NAME ATTACHMENT HARDWARE AND BANDING MATERIAL TO BE APPROVED BY THE ENGINEER.
- FOR SIGN PANEL FABRICATION, MOUNTING HEIGHT AND HOLE SPACING FOR BACKING ZEES, SEE APPLICABLE STANDARDS.
- ALL BOLTS, NUTS AND METAL WASHERS, UNLESS MADE OF STAINLESS STEEL, SHALL BE GALVANIZED OR CADMIUM PLATED.
- ALL HOLES SHALL BE DRILLED OR PUNCHED.
- BANDING SHALL BE IN X .025 IN. MINIMUM STAINLESS STEEL, ROUND-EDGE STRAP WITH AN ULTIMATE BREAKING STRENGTH OF 1500 LBS. MINIMUM. THERE SHALL BE A MINIMUM OF TWO BANDS PER PANEL OR ASSEMBLY EXCEPT WHERE A SINGLE BACKING ANGLE IS USED.
- PANELS OF 36 IN. OR GREATER WIDTH MUST HAVE BACKING MEMBERS IN ADDITION TO BRACKETS. CLASS II PANELS OF LESS THAN 36 IN. WIDTH AND CLASS I PANELS OF GREATER THAN 24 IN. WIDTH SHOULD USE PRE-THREADED BRACKETS SIMILAR TO ALTERNATE SECTION C-C (2 SCREWS).



**CLASS II MARKER ASSEMBLY FABRICATION NOTES**

- HORIZONTAL AND VERTICAL MEMBERS TO BE THE SAME MATERIAL AS THE SIGN PANEL.
- VERTICAL MEMBER TO BE 3 IN. X 1.420 LBS. 6061-T6 ALUMINUM CHANNEL BONDED TO THE POLE WITH A MINIMUM OF TWO BANDS.
- HORIZONTAL MEMBERS TO BE 3 IN. X 2 IN. 2.33 IN. BACKING ZEES, FASTENED TO VERTICAL MEMBER WITH 3/8 IN. MACHINE BOLTS WITH HEX NUT.
- SIGN PANELS TO BE FASTENED TO HORIZONTAL MEMBERS WITH 3/8 IN. - 90 COUNTERSUNK LOCKBOLT FASTENERS.
- VERTICAL SPACING BETWEEN GROUPS OF PANELS IN ONE MARKER ASSEMBLY SHALL BE 4 IN.



**TYPICAL POLE MOUNT INSTALLATION FOR CLASS II MARKER ASSEMBLY**

**TYPICAL POLE MOUNT INSTALLATION FOR CLASS I AND II SIGN PANELS**

**CLASS I AND II SIGN ASSEMBLY FABRICATION NOTES**

- SHAPES OTHER THAN THE BRACKETS OR BACKING ANGLE SHOWN MAY BE USED.
- MAXIMUM SPACING BETWEEN PANELS IN ONE ASSEMBLY SHALL BE 1 IN.
- PANELS MAY BE INSTALLED BACK-TO-BACK ON THE SAME BANDS.
- IN NO CASE SHALL BOLTS OF LESS THAN 5/16 IN. DIA. BE USED FOR ANY PORTION OF THE ASSEMBLY.
- ONLY FIBER WASHERS MAY BE USED ON THE FACE OF THE SIGN PANEL.

Computer File Information	
Creation Date:	07/04/12
Created By:	KEN
Last Modification Date:	07/31/19
Last Modified By:	EButta
CAD Ver.:	MicroStation V8
Scale:	Not to Scale
Units:	English

Sheet Revisions	
Date:	Comments

Colorado Department of Transportation  
 2829 W. Howard Pl.  
 Denver, CO 80204  
 Phone: 303-757-9436  
 FAX: 303-757-9219  
**Traffic & Safety Engineering** MKB

**TYPICAL POLE MOUNT SIGN INSTALLATION**  
 Issued By: Traffic & Safety Engineering Branch July 31, 2019

**STANDARD PLAN NO.**  
 S-614-20  
**Standard Sheet No. 1 of 1**  
 Project Sheet Number: