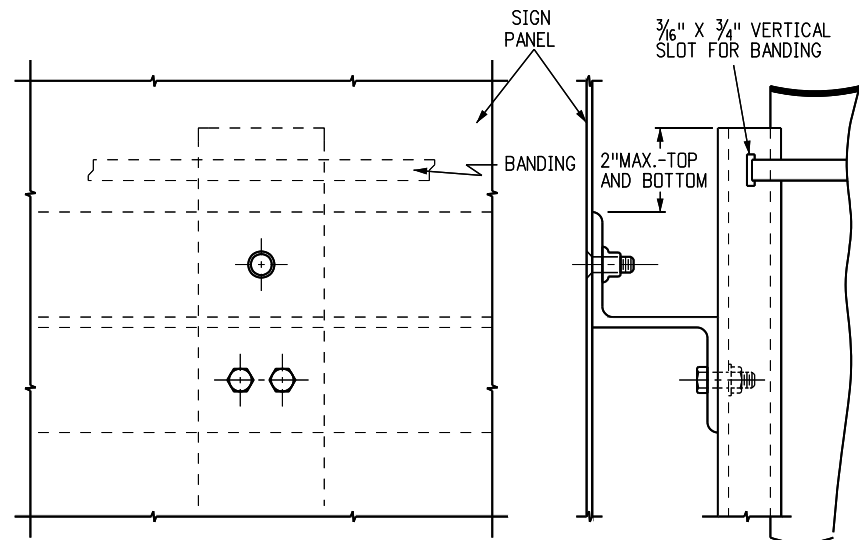


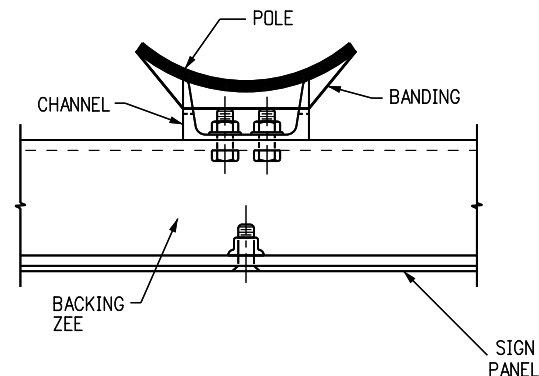
GENERAL NOTES

1. SIGNS SHALL BE LOCATED IN ACCORDANCE WITH THE DETAILS SHOWN ON THE PLANS. SPECIAL CARE SHALL BE TAKEN TO ENSURE AN UNOBSTRUCTED VIEW OF EACH SIGN.
2. BRAND-NAME ATTACHMENT HARDWARE AND BANDING MATERIAL TO BE APPROVED BY THE ENGINEER.
3. FOR SIGN PANEL FABRICATION, MOUNTING HEIGHT AND HOLE SPACING FOR BACKING ZEES, SEE APPLICABLE STANDARDS.
4. ALL BOLTS, NUTS AND METAL WASHERS, UNLESS MADE OF STAINLESS STEEL, SHALL BE GALVANIZED OR CADMIUM PLATED.
5. ALL HOLES SHALL BE DRILLED OR PUNCHED.
6. BANDING SHALL BE IN X .025 IN. MINIMUM STAINLESS STEEL, ROUND-EDGE STRAP WITH AN ULTIMATE BREAKING STRENGTH OF 1500 LBS. MINIMUM. THERE SHALL BE A MINIMUM OF TWO BANDS PER PANEL OR ASSEMBLY EXCEPT WHERE A SINGLE BACKING ANGLE IS USED.
7. PANELS OF 36 INCH OR GREATER WIDTH MUST HAVE BACKING MEMBERS IN ADDITION TO BRACKETS. CLASS II PANELS OF LESS THAN 36 INCH WIDTH AND CLASS I PANELS OF GREATER THAN 24 INCH WIDTH SHOULD USE PRE-THREADED BRACKETS SIMILAR TO ALTERNATE SECTION C-C (2 SCREWS).



CLASS II MARKER ASSEMBLY FABRICATION NOTES

1. HORIZONTAL AND VERTICAL MEMBERS TO BE THE SAME MATERIAL AS THE SIGN PANEL.
2. VERTICAL MEMBER TO BE 3 IN. X 1.420 LBS. 6061-T6 ALUMINUM CHANNEL BONDED TO THE POLE WITH A MINIMUM OF TWO BANDS.
3. HORIZONTAL MEMBERS TO BE 3 IN. X 2 IN. 2.33 IN. BACKING ZEES, FASTENED TO VERTICAL MEMBER WITH 3/8 IN. MACHINE BOLTS WITH HEX NUT.
4. SIGN PANELS TO BE FASTENED TO HORIZONTAL MEMBERS WITH 3/8 IN. - 90 COUNTERSUNK LOCKBOLT FASTENERS.
5. VERTICAL SPACING BETWEEN GROUPS OF PANELS IN ONE MARKER ASSEMBLY SHALL BE 4 IN.



TYPICAL POLE MOUNT INSTALLATION FOR CLASS II MARKER ASSEMBLY

TYPICAL POLE MOUNT INSTALLATION FOR CLASS I AND II SIGN PANELS

CLASS I AND II SIGN ASSEMBLY FABRICATION NOTES

1. SHAPES OTHER THAN THE BRACKETS OR BACKING ANGLE SHOWN MAY BE USED.
2. MAXIMUM SPACING BETWEEN PANELS IN ONE ASSEMBLY SHALL BE 1/2 INCH.
3. PANELS MAY BE INSTALLED BACK-TO-BACK ON THE SAME BANDS.
4. IN NO CASE SHALL BOLTS OF LESS THAN 3/16 INCH DIAMETER BE USED FOR ANY PORTION OF THE ASSEMBLY.

Computer File Information

Creation Date: 07/04/12
Created By: KEN
Last Modification Date: 03/01/24
Last Modified By: YSaucedo
CAD Ver.: MicroStation V8 Scale: Not to Scale Units: English

Sheet Revisions

Date:	Comments
03/01/24	Removed note 5 from Class I and II Assembly Fabrication Notes.

Colorado Department of Transportation



2829 W. Howard Pl.
Denver, CO 80204
Phone: 303-757-9654
FAX: 303-757-9219

Traffic & Safety Engineering EB

TYPICAL POLE MOUNT SIGN INSTALLATION

Issued By: Traffic & Safety Engineering Branch July 31, 2019

STANDARD PLAN NO.

S-614-20

Standard Sheet No. 1 of 1

Project Sheet Number: