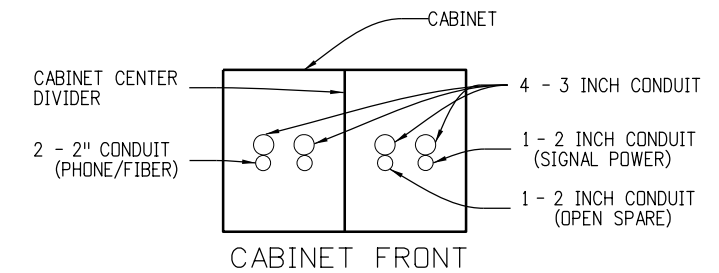
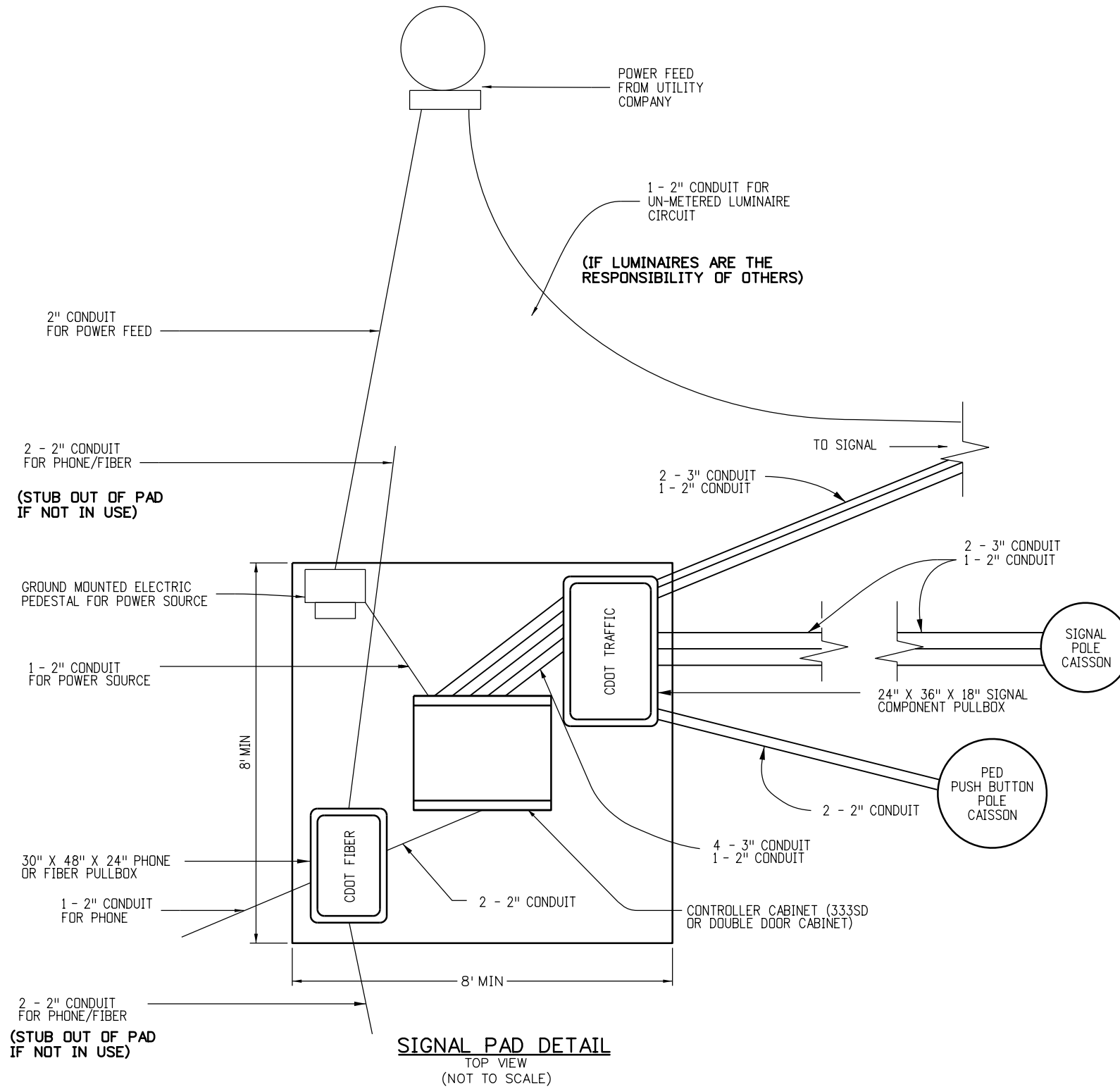
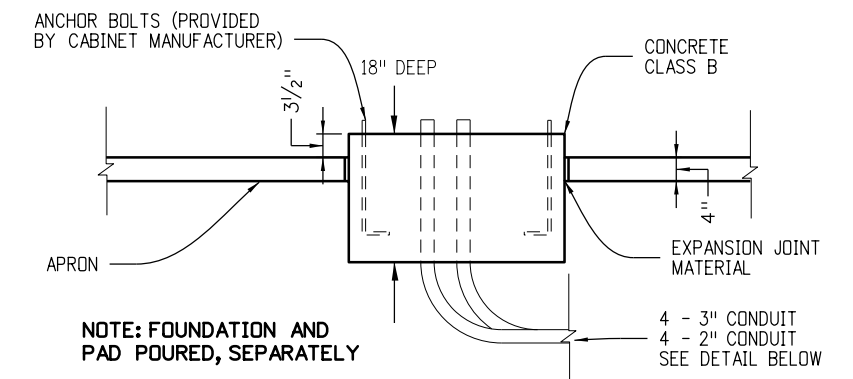
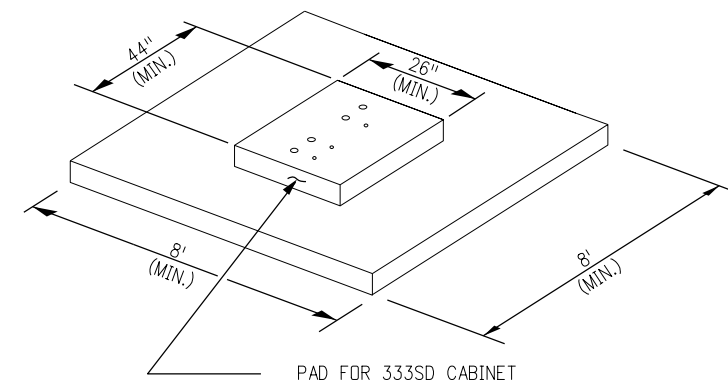


**GENERAL NOTES**

1. THE CONCRETE PAD SURROUNDING THE CABINET BASE SHALL BE CLASS B MIX. GLASS OR SYNTHETIC FIBERS SHALL BE INCORPORATED INTO THE CONCRETE MIX. THE DOSAGE RATE OF THE GLASS OR SYNTHETIC FIBERS SHALL BE THE DOSAGE RATE RECOMMENDED BY THE MANUFACTURER OF THE GLASS OR SYNTHETIC FIBERS. ALL WORK INVOLVING THE CONSTRUCTION OF THE CONCRETE PAD FOR THE SIGNAL CONTROLLER CABINET WILL NOT BE PAID FOR SEPARATELY, BUT SHALL BE INCLUDED IN COST OF THE CONTROLLER CABINET PAY ITEM.



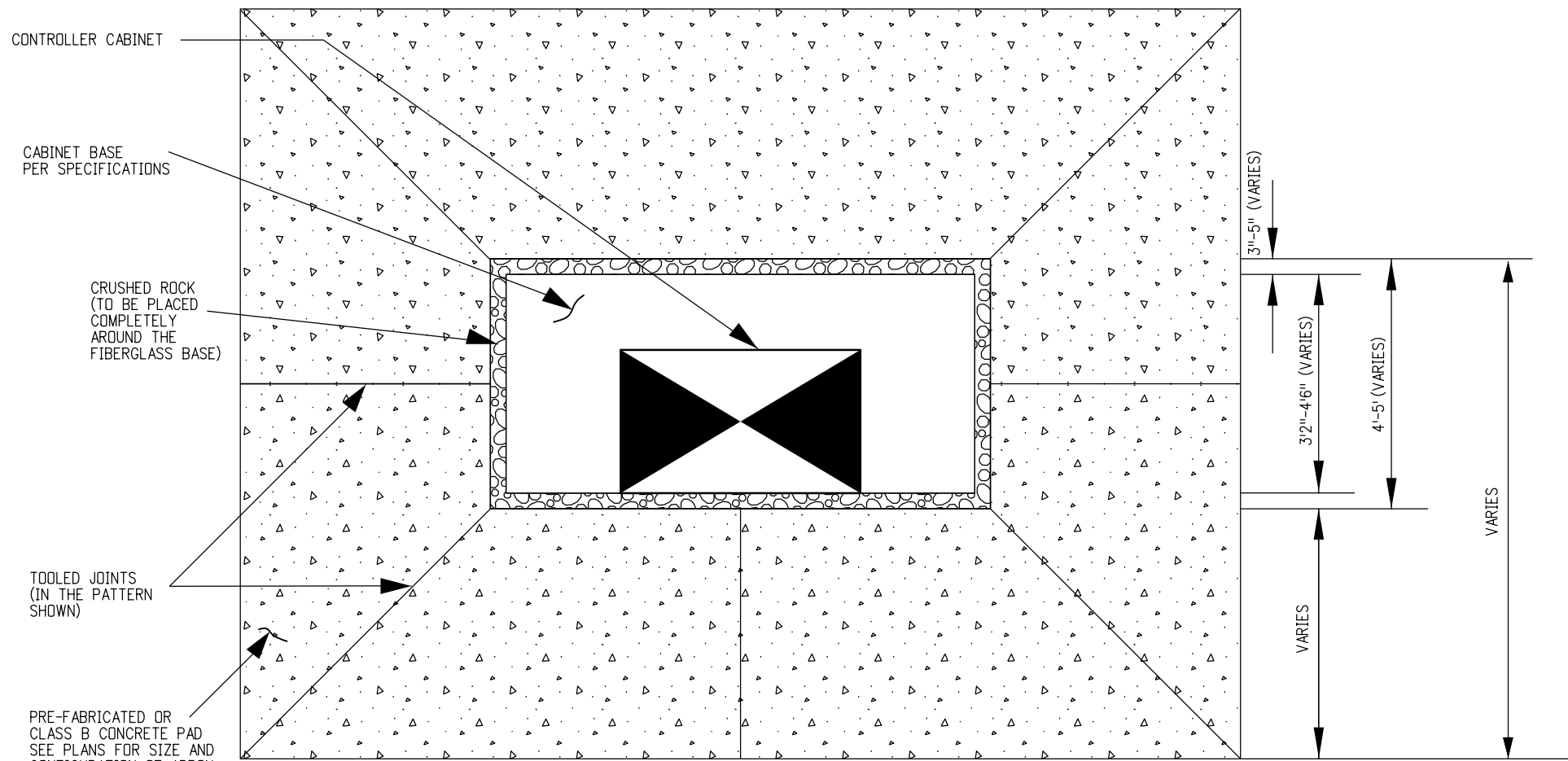
**CONDUIT DETAIL**  
CROSS SECTION  
(NOT TO SCALE)



**FOUNDATION CROSS SECTION**  
(NOT TO SCALE)

**CAST-IN-PLACE FOUNDATION**

<b>Computer File Information</b>		<b>Sheet Revisions</b>		Colorado Department of Transportation		<b>CABINET FOUNDATION DETAIL</b>		<b>STANDARD PLAN NO.</b>	
Creation Date: 07/04/12		Date: 04/04/24		2829 W. Howard Pl. Denver, CO 80204		Issued By: Traffic & Safety Engineering Branch July 31, 2019		S-614-42	
Created By: KEN		Comments: MOVED PULL BOX DETAILS TO S-613-3		Phone: 303-757-9436 FAX: 303-757-9219				Standard Sheet No. 1 of 4	
Last Modification Date: 04/04/24				Traffic & Safety Engineering MKB				Project Sheet Number:	
Last Modified By: AVU									
CAD Ver.: MicroStation V8 Scale: Not to Scale Units: English									



CONTROLLER CABINET

CABINET BASE PER SPECIFICATIONS

CRUSHED ROCK (TO BE PLACED COMPLETELY AROUND THE FIBERGLASS BASE)

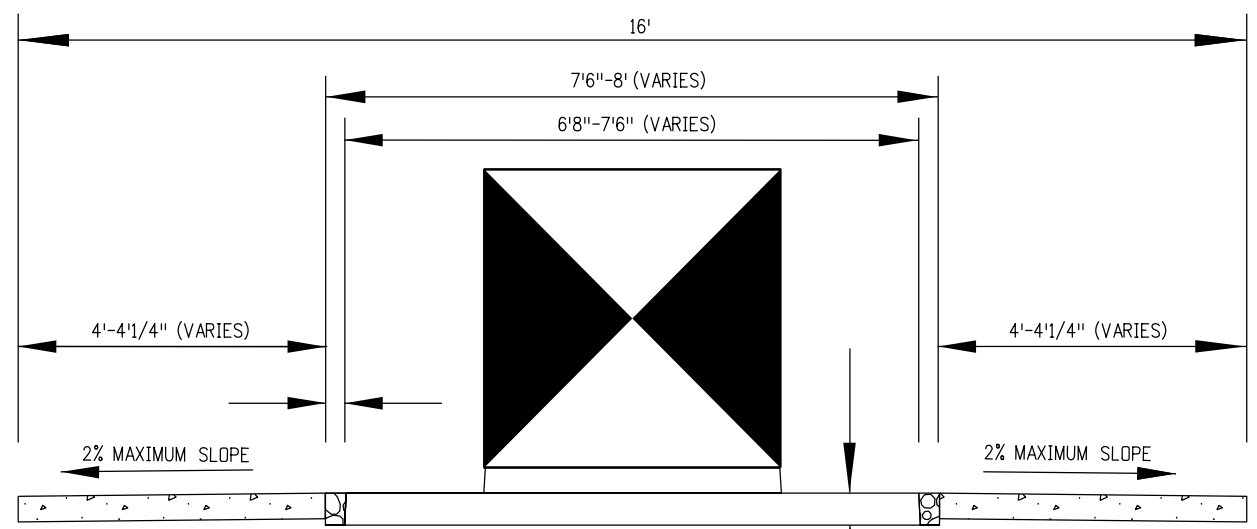
TOOLED JOINTS (IN THE PATTERN SHOWN)

PRE-FABRICATED OR CLASS B CONCRETE PAD SEE PLANS FOR SIZE AND CONFIGURATION OF APRON

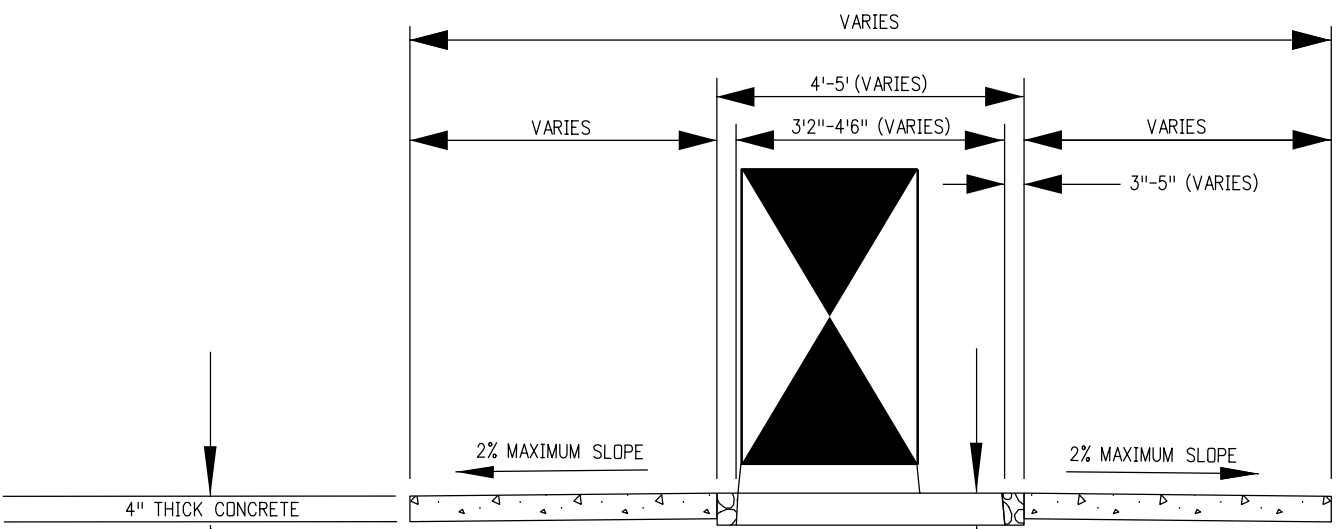
**CONCRETE PAD NOTES**

1. CONTRACTOR SHALL INSTALL PRE-FABRICATED OR CAST-IN-PLACE, FIBERGLASS CONCRETE PAD. SEE SPECIFICATION FOR MORE INFORMATION ON THE CONCRETE MATERIAL.
2. CONTRACTOR SHALL PLACE A 4-INCH THICK CONCRETE PAD (CAST-IN-PLACE OR PRE-FABRICATED), AS INDICATED IN THE PLANS, OR AS DIRECTED BY THE ENGINEER. THE CONCRETE PAD SHALL SLOPE AWAY FROM THE FIBERGLASS BASE AT A MAXIMUM 2% SLOPE.
3. THE CONCRETE PAD SURROUNDING THE CABINET BASE SHALL BE CLASS B MIX. GLASS OR SYNTHETIC FIBERS SHALL BE INCORPORATED INTO THE CONCRETE MIX. THE DOSAGE RATE OF THE GLASS OR SYNTHETIC FIBERS SHALL BE THE DOSAGE RATE RECOMMENDED BY THE MANUFACTURER OF THE GLASS OR SYNTHETIC FIBERS. ALL WORK INVOLVING THE CONSTRUCTION OF THE CONCRETE PAD FOR THE SIGNAL CONTROLLER CABINET WILL NOT BE PAID FOR SEPARATELY, BUT SHALL BE INCLUDED IN THE COST OF THE CONTROLLER CABINET PAY ITEM.
4. PRE-FABRICATED CONCRETE BASE DIMENSIONS SHOWN VARY PER MANUFACTURER'S SPECIFICATIONS.
5. PRE-FABRICATED CONCRETE BASE MANUFACTURER SHALL PROVIDE CONNECTION POINTS IN THE BASE FOR THE SPECIFIC CONTROLLER CABINET SPECIFIED IN THE PLANS.

**TOP VIEW**



**FRONT VIEW**



**SIDE VIEW**

**PRE-FABRICATED FIBERGLASS FOUNDATION**

Computer File Information	
Creation Date:	07/04/12
Created By:	KEN
Last Modification Date:	07/31/19
Last Modified By:	AVU
CAD Ver.: MicroStation V8 Scale: Not to Scale Units: English	

Sheet Revisions	
Date:	Comments

Colorado Department of Transportation

2829 W. Howard Pl.  
Denver, CO 80204  
Phone: 303-757-9436  
FAX: 303-757-9219

Traffic & Safety Engineering MKB

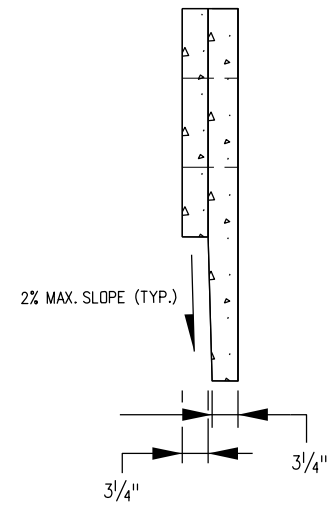
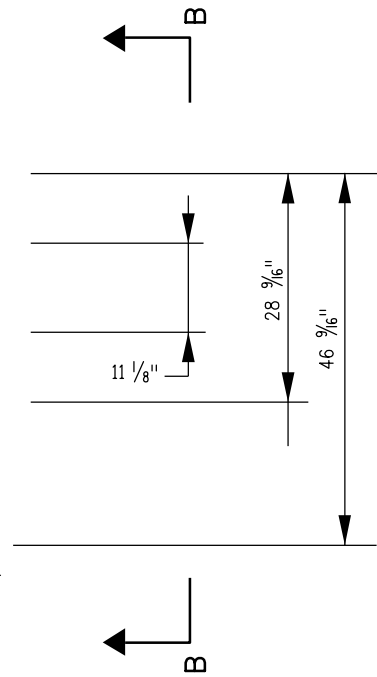
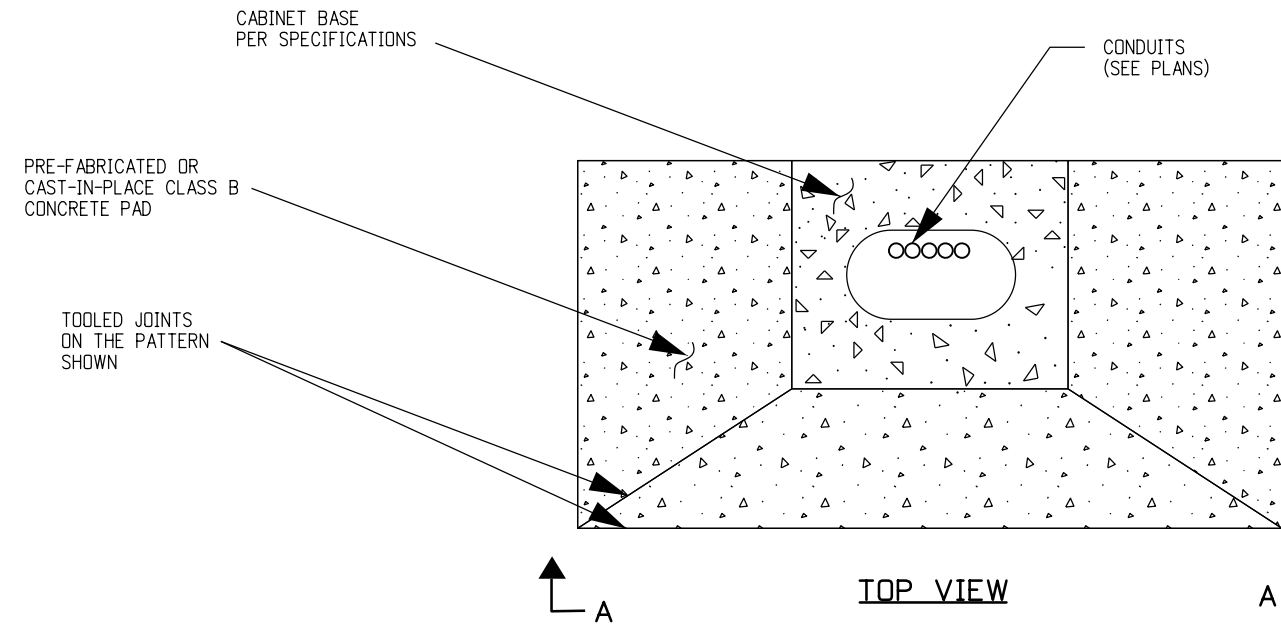
**CABINET FOUNDATION  
DETAIL**

Issued By: Traffic & Safety Engineering Branch July 31, 2019

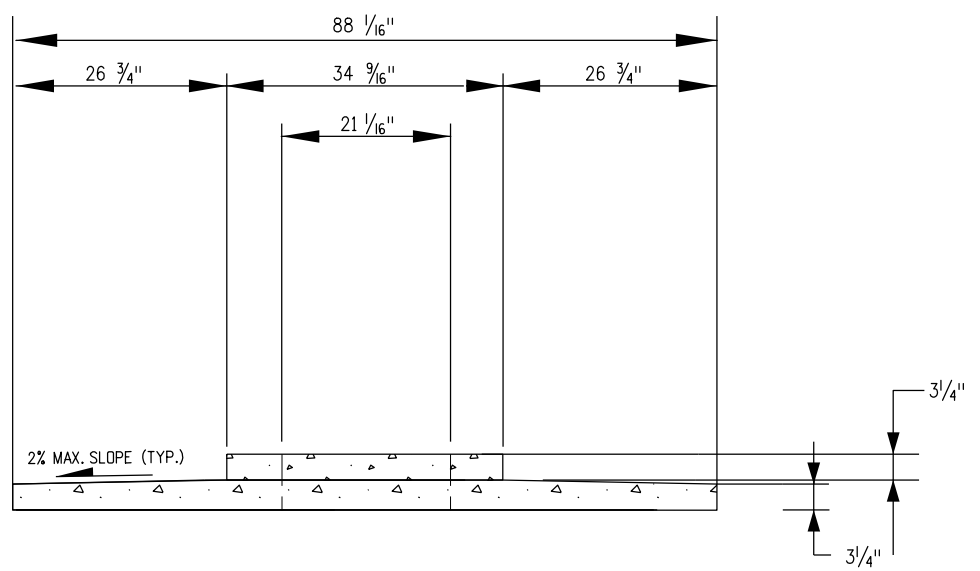
**STANDARD PLAN NO.  
S-614-42**

Standard Sheet No. 2 of 4

Project Sheet Number:



SECTION B-B



SECTION A-A

**CONCRETE PAD NOTES**

1. CONTRACTOR SHALL INSTALL PRE-FABRICATED OR CAST-IN-PLACE CONCRETE PAD. SEE SPECIFICATION FOR MORE INFORMATION ON THE CONCRETE MATERIAL.
2. CONTRACTOR SHALL PLACE A 3/4-INCH THICK CONCRETE PAD (CAST-IN-PLACE OR PRE-FABRICATED), AS INDICATED IN THE DETAILS, OR AS DIRECTED BY THE ENGINEER. THE CONCRETE PAD SHALL SLOPE AWAY FROM THE FIBERGLASS BASE AT A MAXIMUM 2% SLOPE.
3. THE CONCRETE PAD SURROUNDING THE PRE-FABRICATED OR CAST-IN-PLACE BASE SHALL BE CLASS B MIX. GLASS OR SYNTHETIC FIBERS SHALL BE INCORPORATED INTO THE CONCRETE MIX. THE DOSAGE RATE OF THE GLASS OR SYNTHETIC FIBERS SHALL BE THE DOSAGE RATE RECOMMENDED BY THE MANUFACTURER OF THE GLASS OR SYNTHETIC FIBERS. ALL WORK INVOLVING THE CONSTRUCTION OF THE CONCRETE PAD FOR THE SIGNAL CONTROLLER CABINET WILL NOT BE PAID FOR SEPARATELY, BUT SHALL BE INCLUDED IN THE COST OF THE CONTROLLER CABINET PAY ITEM.
4. FOUNDATIONS SHALL BE LOCATED TO PROVIDE 34-INCH MINIMUM CLEARANCE BETWEEN FACE-OF-CURB AND ANY PORTION OF THE CONTROLLER CABINET.
5. IN UNPAVED AREAS, THE TOP FOUNDATION FOR MODELS 332 - 334 CONTROLLER CABINETS SHALL BE THREE (3) INCHES ABOVE SURROUNDING GRADE.
6. FIBERGLASS BASE DIMENSIONS SHOWN VARY PER MANUFACTURER'S SPECIFICATIONS.

**FOUNDATION DETAILS**

FOR MODEL 332 THROUGH 334 CONTROLLER CABINETS

Computer File Information	
Creation Date:	07/04/12
Created By:	KEN
Last Modification Date:	
Last Modified By:	
CAD Ver.: MicroStation V8 Scale: Not to Scale Units: English	

Sheet Revisions	
Date:	Comments

Colorado Department of Transportation



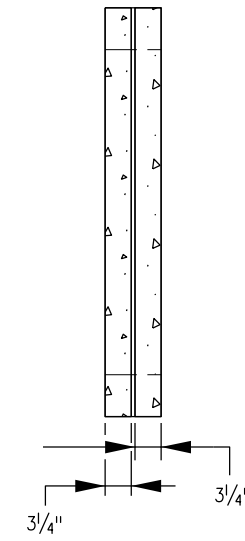
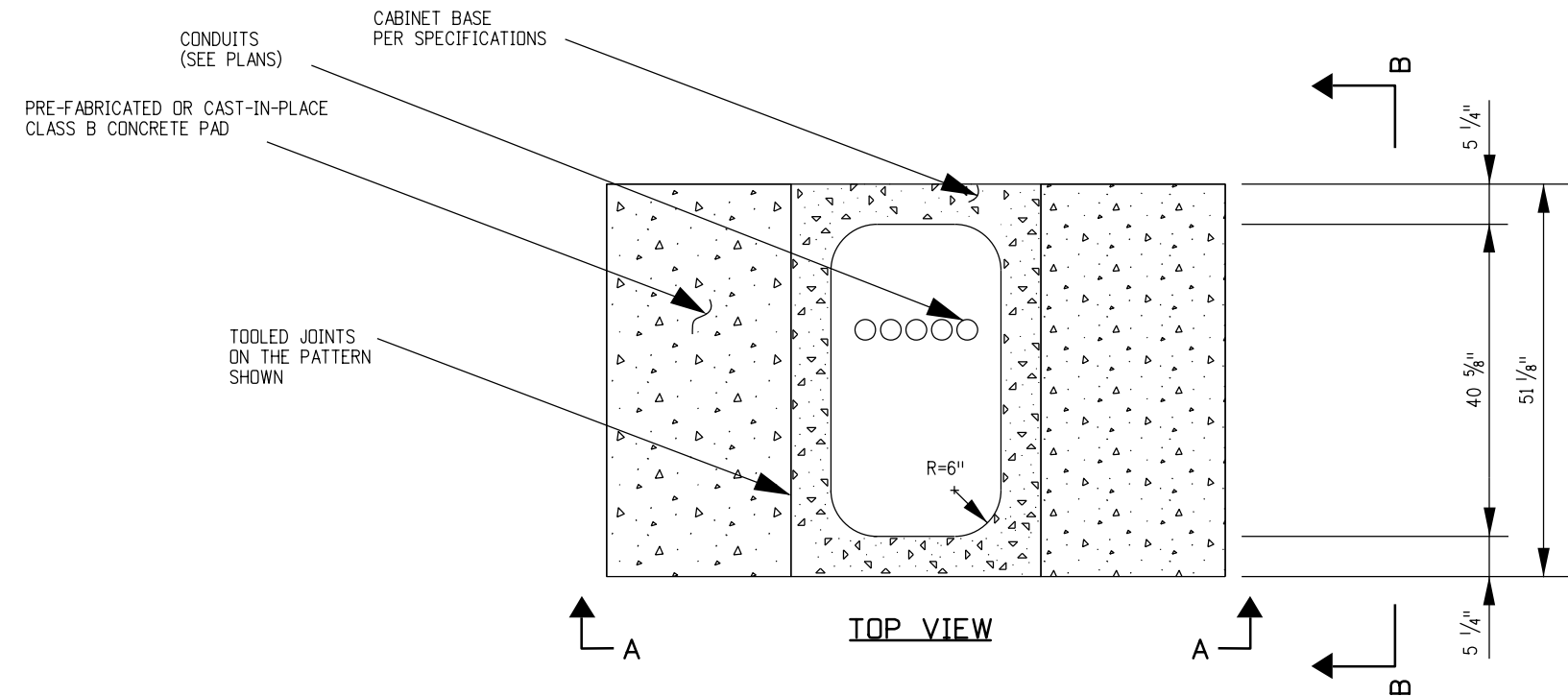
2829 W. Howard Pl.  
Denver, CO 80204  
Phone: 303-757-9436  
FAX: 303-757-9219

Traffic & Safety Engineering MKB

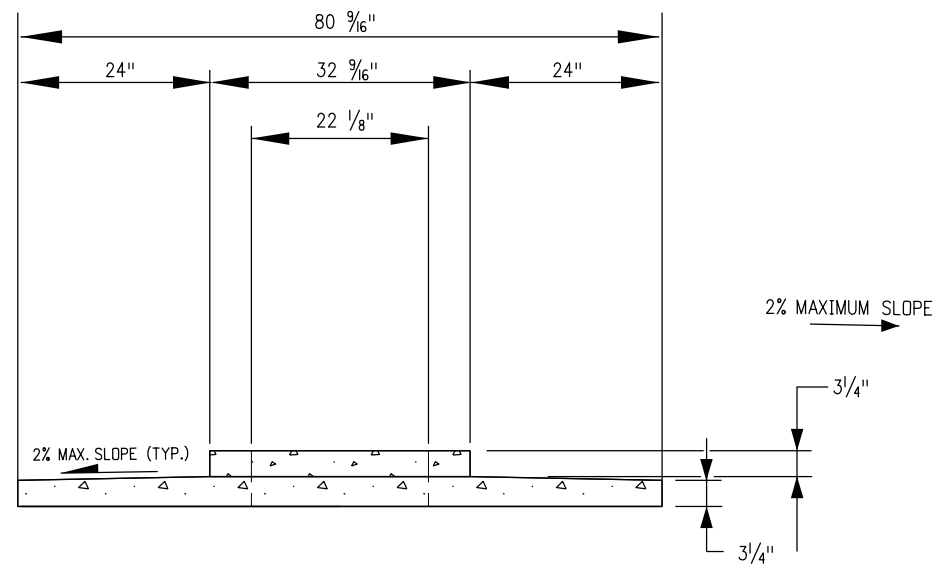
**CABINET FOUNDATION  
DETAIL**

Issued By: Traffic & Safety Engineering Branch July 31, 2019

<b>STANDARD PLAN NO.</b>
<b>S-614-42</b>
<b>Standard Sheet No. 3 of 4</b>
Project Sheet Number:



SECTION B-B



SECTION A-A

**CONCRETE PAD NOTES**

1. CONTRACTOR SHALL INSTALL PRE-FABRICATED OR CAST-IN-PLACE CONCRETE PAD. SEE SPECIFICATION FOR MORE INFORMATION ON THE CONCRETE MATERIAL.
2. CONCRETE SHALL PLACE A 3/4-INCH THICK CONCRETE PAD (CAST-IN-PLACE OR PRE-FABRICATED), AS INDICATED IN THE DETAILS, OR AS DIRECTED BY THE ENGINEER. THE CONCRETE PAD SHALL SLOPE AWAY FROM THE FIBERGLASS BASE AT A MAXIMUM 2% SLOPE.
3. THE CONCRETE PAD SURROUNDING THE PRE-FABRICATED OR CAST-IN-PLACE BASE SHALL BE CLASS B MIX. GLASS OR SYNTHETIC FIBERS SHALL BE INCORPORATED INTO THE CONCRETE MIX. THE DOSAGE RATE OF THE GLASS OR SYNTHETIC FIBERS SHALL BE THE DOSAGE RATE RECOMMENDED BY THE MANUFACTURER OF THE GLASS OR SYNTHETIC FIBERS. ALL WORK INVOLVING THE CONSTRUCTION OF THE CONCRETE PAD FOR THE SIGNAL CONTROLLER CABINET WILL NOT BE PAID FOR SEPARATELY, BUT SHALL BE INCLUDED IN THE COST OF THE CONTROLLER CABINET PAY ITEM.
4. FOUNDATIONS SHALL BE LOCATED TO PROVIDE 34-INCH MINIMUM CLEARANCE BETWEEN FACE-OF-CURB AND ANY PORTION OF THE CONTROLLER CABINET.
5. IN UNPAVED AREAS, THE TOP FOUNDATION FOR MODELS 332D AND 333JP CONTROLLER CABINETS SHALL BE THREE (3) INCHES ABOVE SURROUNDING GRADE.
6. FIBERGLASS BASE DIMENSIONS SHOWN VARY PER MANUFACTURER'S SPECIFICATIONS.

**FOUNDATION DETAILS**  
FOR MODEL 332D - 333JP CABINETS

<b>Computer File Information</b>		<b>Sheet Revisions</b>		Colorado Department of Transportation 2829 W. Howard Pl. Denver, CO 80204 Phone: 303-757-9436 FAX: 303-757-9219	<b>CABINET FOUNDATION DETAIL</b>	<b>STANDARD PLAN NO.</b>	
Creation Date: 07/04/12		Date:	Comments:			S-614-42	
Created By: KEN				<b>Traffic &amp; Safety Engineering</b> <b>MKB</b>	Issued By: Traffic & Safety Engineering Branch July 31, 2019	<b>Standard Sheet No. 4 of 4</b>	
Last Modification Date:						Project Sheet Number:	
Last Modified By:							
CAD Ver.: MicroStation V8    Scale: Not to Scale    Units: English							