

LEGEND

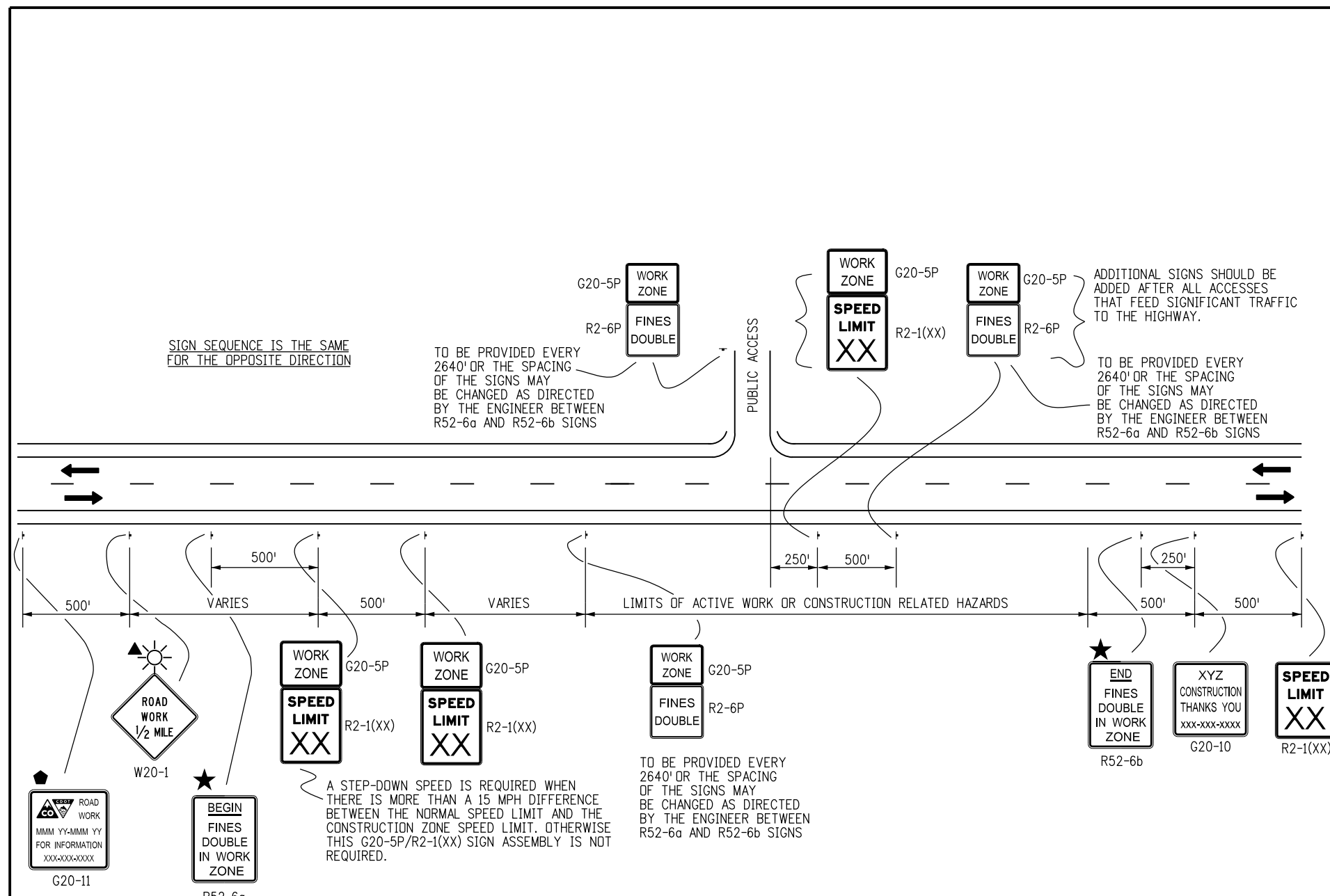
- ← DIRECTION OF TRAVEL
- ▲ THESE DEVICES ARE OPTIONAL. THEIR NEED WILL BE DETERMINED BY THE DESIGNER BASED ON DETOUR DESIGN AND/OR SCOPE OF THE CONSTRUCTION ACTIVITY, AND ARE REQUIRED WHEN THEY ARE INCLUDED IN THE PLANS.
- ◆ G20-11 SIGN IS REQUIRED WHEN SECTION 626 "PUBLIC INFORMATION SERVICES" PROJECT SPECIAL PROVISION WORKSHEET SPECIFICATION IS REQUIRED WITH PROJECT.
- ☀ FLASHING BEACON
- ★ FINES DOUBLE SIGNING NOTES, SEE BELOW

FINES DOUBLE SIGNING NOTES:

1. SIGNS SHALL NOT BE PLACED SOONER THAN FOUR HOURS BEFORE WORK IS TO BEGIN AND SHALL BE REMOVED AS SOON AS WORK ACTIVITIES ARE CONCLUDED, UNLESS POTENTIAL HAZARDS INTRODUCED AS A RESULT OF THE WORK ARE STILL PRESENT AT THE END OF THE WORK DAY. IF SIGNS ARE LEFT IN PLACE AFTER WORK ACTIVITIES, THE TRAFFIC CONTROL SUPERVISOR SHALL MAKE AN ENTRY IN THEIR DAILY DIARY THAT JUSTIFIES THEIR USE.

"HAZARDS" INCLUDE BUT ARE NOT LIMITED TO:
 EDGE DROP OFFS
 EQUIPMENT, WORKERS OR NON-SHIELDED OBJECTS IN THE CLEAR ZONE
 ROUGH PAVEMENT
 MAJOR CHANGE IN ALIGNMENT
 REDUCED SHOULDER WIDTH
 TEMPORARY GUARD RAIL OR BARRIER
 LANE CLOSURE

2. SIGNS SHALL ONLY BE PLACED WHERE WORKERS ARE PRESENT IN THE ROADWAY OR CLEAR ZONE OR ARE AT RISK, OR WHERE THERE ARE HAZARDS IN THE TRAVELWAY, SHOULDERS OR CLEAR ZONE.
3. SIGNS SHOULD BE PLACED SO THAT MOTORISTS IMMEDIATELY ASSOCIATE THE SIGNS WITH PRESENT WORK ACTIVITIES. IF THE ZONE OF WORK ACTIVITY MOVES, THE SIGNS SHOULD BE MOVED ACCORDINGLY.
4. SIGNING SHOWN IS REQUIRED TO ENFORCE DOUBLE FINES IN A WORK ZONE. ADDITIONAL SIGNING SHALL BE IN ACCORDANCE WITH THAT NORMALLY REQUIRED FOR THE PARTICULAR WORK ZONE. PLACEMENT OF "FINES DOUBLE" SIGNING MAY BE ADJUSTED AS NEEDED TO PROVIDE A MINIMUM 250' SPACING BETWEEN OTHER SIGNING REQUIRED FOR THE SPECIFIC WORK ZONE SETUP.



SIGN SEQUENCE IS THE SAME FOR THE OPPOSITE DIRECTION

TO BE PROVIDED EVERY 2640' OR THE SPACING OF THE SIGNS MAY BE CHANGED AS DIRECTED BY THE ENGINEER BETWEEN R52-6a AND R52-6b SIGNS

ADDITIONAL SIGNS SHOULD BE ADDED AFTER ALL ACCESSES THAT FEED SIGNIFICANT TRAFFIC TO THE HIGHWAY.

TO BE PROVIDED EVERY 2640' OR THE SPACING OF THE SIGNS MAY BE CHANGED AS DIRECTED BY THE ENGINEER BETWEEN R52-6a AND R52-6b SIGNS

A STEP-DOWN SPEED IS REQUIRED WHEN THERE IS MORE THAN A 15 MPH DIFFERENCE BETWEEN THE NORMAL SPEED LIMIT AND THE CONSTRUCTION ZONE SPEED LIMIT. OTHERWISE THIS G20-5P/R2-1(XX) SIGN ASSEMBLY IS NOT REQUIRED.

TO BE PROVIDED EVERY 2640' OR THE SPACING OF THE SIGNS MAY BE CHANGED AS DIRECTED BY THE ENGINEER BETWEEN R52-6a AND R52-6b SIGNS

R52-6a SHALL BE PLACED NOT MORE THAN 500' BEFORE THE FIRST SPEED LIMIT SIGN ARRAY.

**CASE NO. 24
 TYPICAL APPLICATION
 "FINES DOUBLE IN WORK ZONE" SIGNING
 (WITH SPEED REDUCTION)**

Computer File Information		Sheet Revisions		<p>Colorado Department of Transportation 4201 East Arkansas Avenue Denver, Colorado 80222 Phone: 303-757-9543 FAX: 303-757-9219 Safety & Traffic Engineering KCM</p>	<p>TRAFFIC CONTROLS FOR HIGHWAY CONSTRUCTION</p>	STANDARD PLAN NO.
Creation Date: 07/04/12	Initials: RRR	Date:	Comments:			S-630-1
Last Modification Date:	Initials:					
Full Path: www.coloradodot.info/library/traffic/traffic-s-standard-plans					Sheet No. 12 of 24	
Drawing File Name: S-630-01.dgn						
CAD Ver.: MicroStation V8i	Scale: Not to Scale	Units: English			Issued By: Safety & Traffic Engineering Branch July 4, 2012	