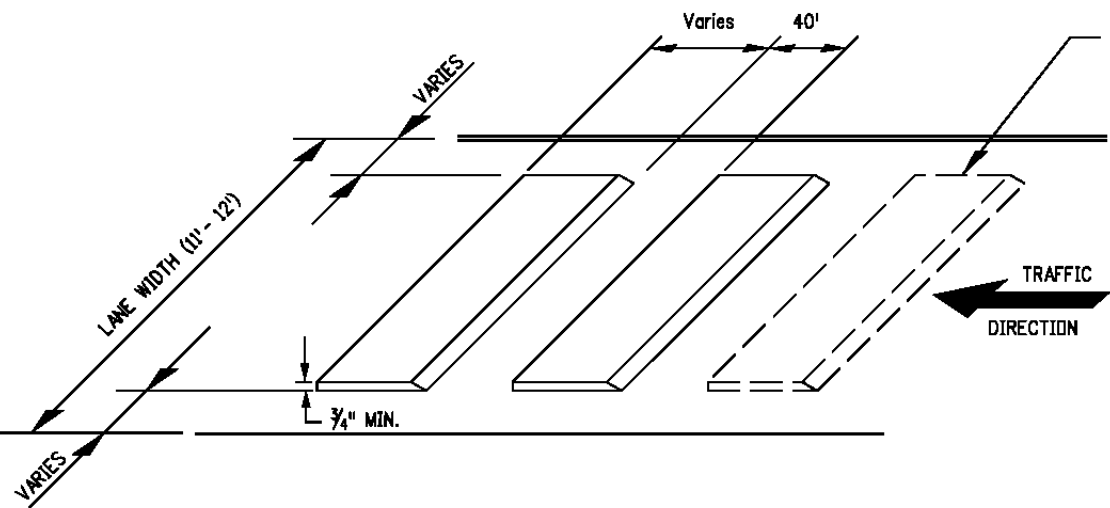


**CASE NO. 1  
TYPICAL APPLICATION  
TWO-LANE UNDIVIDED HIGHWAY**



**DETAIL - TEMPORARY PORTABLE RUMBLE STRIP ARRAY**

**GENERAL NOTES**

- TEMPORARY PORTABLE RUMBLE STRIP ARRAYS SHALL BE PLACED IN ADVANCE OF EACH FLAGGING STATION WHEN CALLED FOR IN THE PLANS.
- TEMPORARY PORTABLE RUMBLE STRIP ARRAYS ARE USED TO SUPPLEMENT A SERIES OF ADVANCED WARNING SIGNS AND SHALL BE INSTALLED AND REMOVED WHEN THE SIGNS ARE INSTALLED AND REMOVED.
- REMOVE THE TEMPORARY PORTABLE RUMBLE STRIPS PRIOR TO REMOVING THE ADVANCED WARNING SIGNS.
- LANE WIDTHS SHOULD BE MAINTAINED THROUGH WORK ZONE TRAVEL LANES WHEREVER PRACTICAL.
- DO NOT USE TEMPORARY RUMBLE STRIPS ON SLIPPERY SURFACES, SUCH AS WET OR SANDY PAVEMENT.
- DO NOT USE TEMPORARY RUMBLE STRIPS ON HORIZONTAL CURVES.
- USE TEMPORARY PORTABLE RUMBLE STRIPS ON ROADWAYS WITH POSTED WORK ZONE SPEED LIMITS OF 75 MPH OR LESS.
- FOR THE LOWEST AIR TEMPERATURE TO APPLY THE TEMPORARY PORTABLE RUMBLE STRIPS ON ROAD PAVEMENTS, CONTACT THE TEMPORARY PORTABLE RUMBLE STRIP MANUFACTURER.
- INSTALL PER MANUFACTURER'S RECOMMENDATIONS.
- OPTIONAL RUMBLE STRIP TO INSTALL, AS DIRECTED BY THE ENGINEER.

**LEGEND**

- CHANNELIZING DEVICE: FOR TYPE OF DEVICE TO BE USED, SEE THE SCHEDULE OF CONSTRUCTION TRAFFIC CONTROL DEVICES INCLUDED IN PLANS.
- DIRECTION OF TRAVEL
- FLAGGER
- WORK AREA

- T = TERMINATION TAPER = 100'
- S = WORK ZONE SPEED LIMIT
- W = LANE WIDTH
- L = MERGING TAPER (S > 45 MPH) = WxS
- L = MERGING TAPER (S < 45 MPH) = (WxS<sup>2</sup>)/60
- N = NUMBER OF DEVICES (L/S) + 1
- N = NUMBER OF DEVICES AT TERMINATION TAPER = 5 (MIN.)

**\*KEY TO ADVANCE SIGNING DISTANCES**

ROAD TYPE	DISTANCE BETWEEN SIGNS (FT.)		
	A	B	C
URBAN (S < 45 MPH)	100	100	100
URBAN (S ≥ 45 MPH)	350	350	350
RURAL	500	500	500

Computer File Information	
Creation Date:	07/04/12
Created By:	KEN
Last Modification Date:	05/22/18
Last Modified By:	DiNardo
CAD Ver.:	MicroStation V8
Scale:	Not to Scale
Units:	English

Sheet Revisions		
Date:	Comments	
(R-1) 01/24/13	Made 3rd Rumble Strip Array Optional	
(R-2) 07/26/13	Corrected Sign Code Designation for Flagger (Symbol) Sign to W20-7	
(R-3) 08/11/15	Modified Minimum Thickness to 3/4"	
(R-4) 05/22/18	Modified "Variable" Spacing to a Defined 40 feet	

Colorado Department of Transportation

2829 W. Howard Pl.  
Denver, CO 80204  
Phone: 303-757-9436  
FAX: 303-757-9219

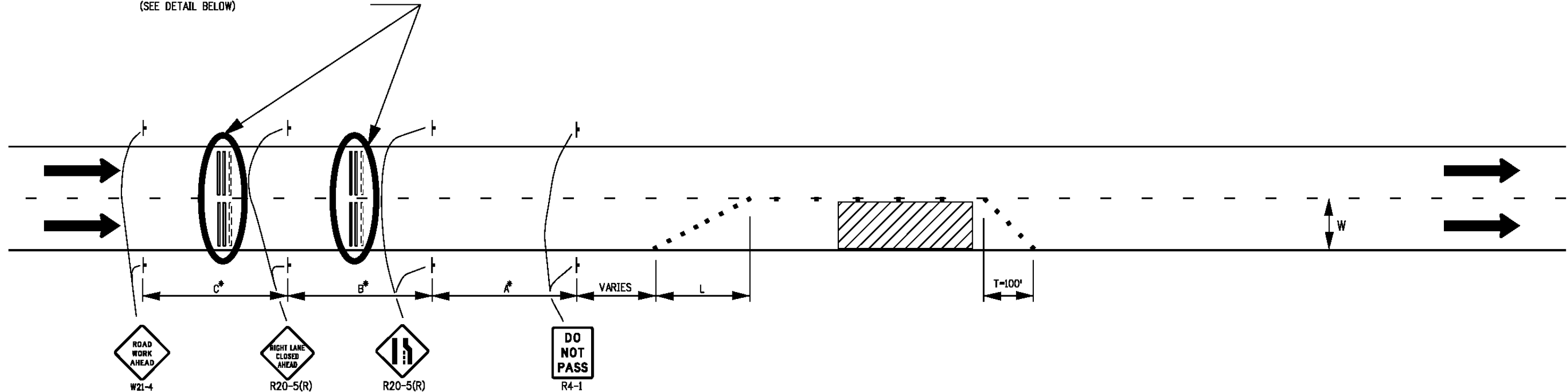
Traffic & Safety Engineering MKB

**PORTABLE RUMBLE STRIPS (TEMPORARY)**

Issued By: Traffic & Safety Engineering Branch July 31, 2019

STANDARD PLAN NO.	
S-630-5	
Standard Sheet No. 1 of 2	
Project Sheet Number:	

TEMPORARY PORTABLE RUMBLE STRIP ARRAYS  
(SEE DETAIL BELOW)



**CASE NO. 2  
TYPICAL APPLICATION  
MULTI-LANE DIVIDED HIGHWAY WITH RIGHT LANE CLOSED**

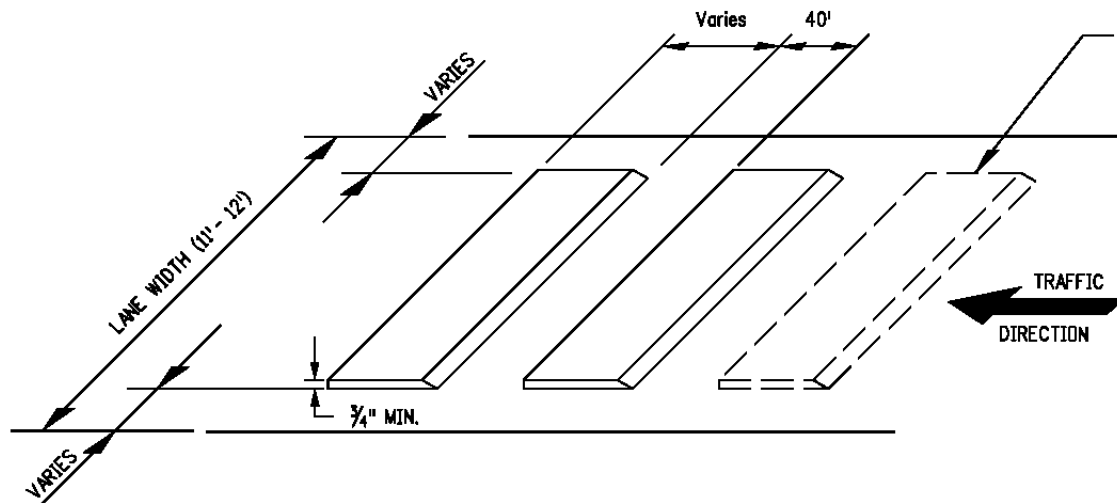
**LEGEND**

- CHANNELIZING DEVICE; FOR TYPE OF DEVICE TO BE USED, SEE THE SCHEDULE OF CONSTRUCTION TRAFFIC CONTROL DEVICES INCLUDED IN PLANS.
- ➔ DIRECTION OF TRAVEL
- ▨ WORK AREA
- T = TERMINATION TAPER = 100'
- S = WORK ZONE SPEED LIMIT
- W = LANE WIDTH
- L = MERGING TAPER (S ≥ 45 MPH) = WxS
- L = MERGING TAPER (S < 45 MPH) = (WxS<sup>2</sup>)/60
- N = NUMBER OF DEVICES (L/S) + 1
- N = NUMBER OF DEVICES AT TERMINATION TAPER = 5 (MIN.)

**GENERAL NOTES**

OPTIONAL RUMBLE STRIP (SEE NOTE 9)

1. TEMPORARY PORTABLE RUMBLE STRIP ARRAYS ARE USED TO SUPPLEMENT A SERIES OF ADVANCED WARNING SIGNS AND SHALL BE INSTALLED AND REMOVED WHEN THE SIGNS ARE INSTALLED AND REMOVED.
2. REMOVE THE TEMPORARY PORTABLE RUMBLE STRIPS PRIOR TO REMOVING THE ADVANCED WARNING SIGNS.
3. LANE WIDTHS SHOULD BE MAINTAINED THROUGH WORK ZONE TRAVEL LANES WHEREVER PRACTICAL.
4. DO NOT USE TEMPORARY RUMBLE STRIPS ON SLIPPERY SURFACES, SUCH AS WET OR SANDY PAVEMENT.
5. DO NOT USE TEMPORARY RUMBLE STRIPS ON HORIZONTAL CURVES.
6. USE TEMPORARY PORTABLE RUMBLE STRIPS ON ROADWAYS WITH POSTED WORK ZONE SPEED LIMITS OF 75 MPH OR LESS.
7. FOR THE LOWEST AIR TEMPERATURE TO APPLY THE TEMPORARY PORTABLE RUMBLE STRIPS ON ROAD PAVEMENTS, CONTACT THE TEMPORARY PORTABLE RUMBLE STRIP MANUFACTURER.
8. INSTALL PER MANUFACTURER'S RECOMMENDATIONS.
9. OPTIONAL RUMBLE STRIP TO INSTALL, AS DIRECTED BY THE ENGINEER.



**DETAIL - TEMPORARY PORTABLE RUMBLE STRIP ARRAY**

**\*KEY TO ADVANCE SIGNING DISTANCES**

ROAD TYPE	DISTANCE BETWEEN SIGNS (FT.)		
	A	B	C
URBAN (S < 45 MPH)	100	100	100
URBAN (S ≥ 45 MPH)	350	350	350
RURAL	500	500	500
EXPRESSWAY/FREEWAY	1,000	1,500	2,640

Computer File Information	
Creation Date:	07/04/12
Created By:	KEN
Last Modification Date:	05/22/18
Last Modified By:	DiNardo
CAD Ver.: MicroStation V8 Scale: Not to Scale Units: English	

Sheet Revisions		
Date:	Comments	
(R-1) 01/24/13	Made 3rd Rumble Strip Array Optional	
(R-2) 08/11/15	Modified Minimum Thickness to 3/4"	
(R-3) 05/22/18	Modified "Variable" Spacing to a Defined 40 feet	

Colorado Department of Transportation

2829 W. Howard Pl.  
Denver, CO 80204  
Phone: 303-757-9436  
FAX: 303-757-9219

Traffic & Safety Engineering **MKB**

**PORTABLE RUMBLE STRIPS (TEMPORARY)**

Issued By: Traffic & Safety Engineering Branch July 31, 2019

STANDARD PLAN NO.	
S-630-5	
Standard Sheet No. 2 of 2	
Project Sheet Number:	