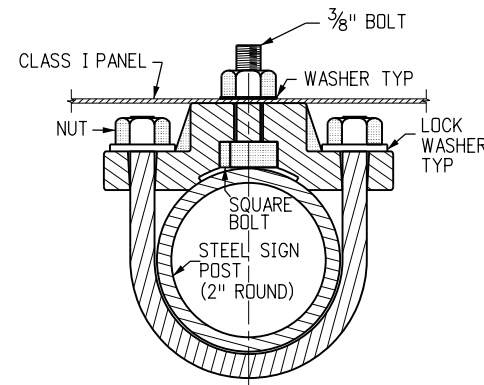
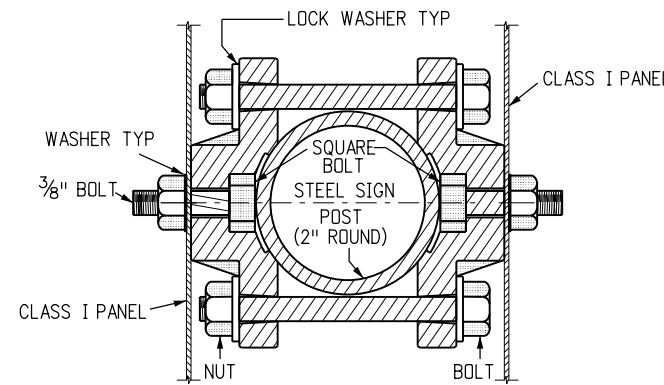


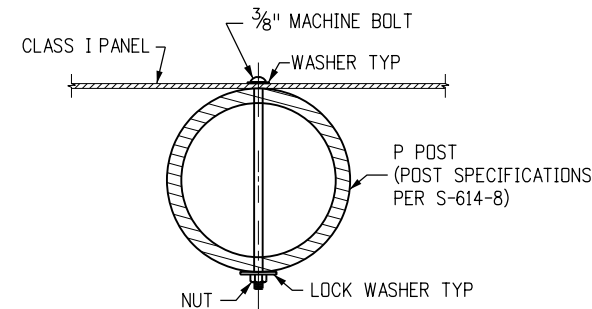
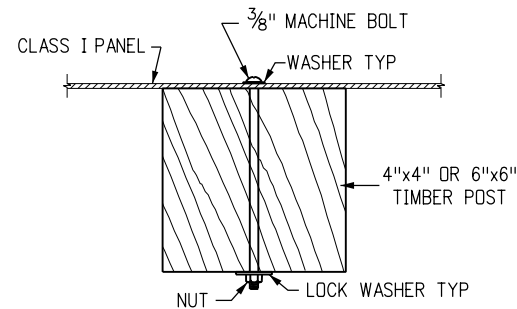
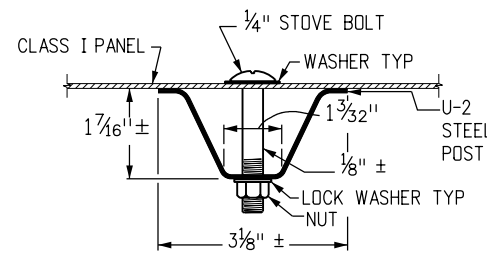
Typical Single Bracket



Typical Back To Back



Typical Round Steel Pole Section



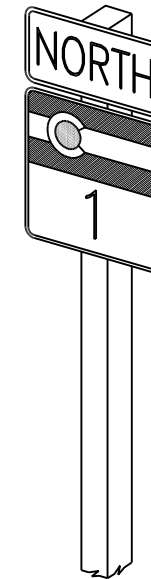
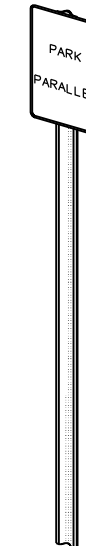
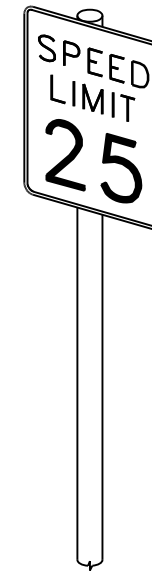
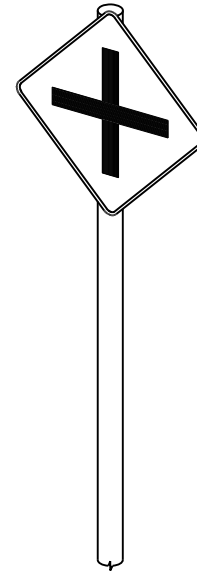
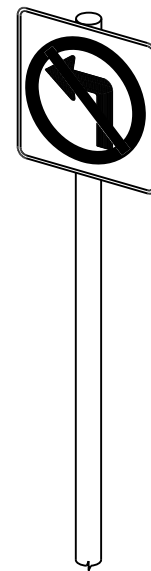
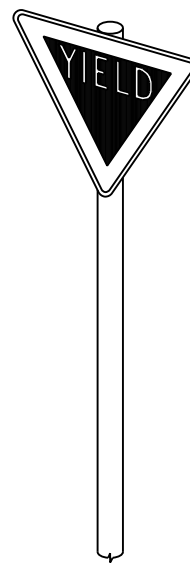
Typical U-2 Post Section

Typical Timber Post Section

Typical P Post Section

General Notes

1. Timber signposts may only be used for temporary signage during construction. Tubular steel shall be used for permanent installations.
2. Class I sign panels are those that do not require backing zees. Sign panels up to 60 inches in width may be attached directly to T brackets. Sign panels up to 48 inches in width may be attached directly to U brackets. Class I sign panels shall be 0.10 inches minimum thickness single sheet aluminum.
3. Class I sign panels shall be fastened to the U-2 post with 2-1/4 inch diameter stove bolts and to timber posts and P post with 2-3/8 inch diameter machine bolts. See Standard Plans S-614-20 and S-614-22 for exceptions.
4. A washer with a diameter of 1.25 inches shall be placed between the bolt head and the face of the sign panel. The washer shall not cover any lettering on the sign panel that could confuse the traveling public. A 1 inch diameter washer shall be placed between the nut and timber post.
5. Bolts, nuts and washers shall be galvanized or cadmium plated.
6. The retro-reflective sheeting shall be on the Department's approved product list.
7. For sign placement see Standard Plan S-614-1.
8. U-2 posts may only be used for delineators, mile markers and structure number plaques. "U" shape steel posts shall be a uniform flanged channel section made from hot rolled structural steel, re-rolled rail steel, or new billet steel having a minimum yield strength of at least 30,000 psi, and a minimum tensile strength of at least 50,000 psi. "U" shape posts shall weigh 2 pounds/foot, except that a mill tolerance of minus 3 1/2% of the weight of any one post will be allowed. "U" shape posts shall have 3/16 inch holes drilled or punched on 1 inch or 2 inch centers for the top 4 feet of the post as a minimum, with the first hole 1 1/2 inch from the top of the post. Color of posts shall be interstate green.
9. Vertical spacing between panels on the same post shall be 1 inch to 1 1/2 inch.



Typical Class I Ground Signs

Computer File Information		Sheet Revisions		Colorado Department of Transportation  Traffic Safety & Engineering Services 2829 West Howard Place Denver, CO 80204 EB	<h1>Class I Signs</h1>	Standard Plan No.	
Creation Date: 07/04/12		Date:	Comments			S-614-2	Standard Sheet No. 1 of 1
Created By: KCM						Project Sheet Number:	
Last Modification Date: 07/01/26						Issued by the Traffic Safety & Engineering Services: July 01, 2026	
Last Modified By: YSP							
CAD Ver.: ORD 10.12 Scale: Not to Scale Units: English							