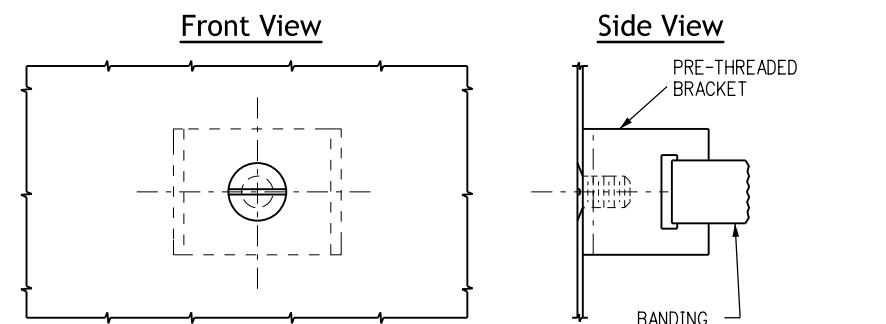


**Class II Marker Assembly Fabrication Notes**

1. Horizontal and vertical members to be the same material as the sign panel.
2. Vertical member to be 3 inch x 1.420 pounds 6061-T6 aluminum channel bonded to the pole with a minimum of two bands.
3. Horizontal members to be 3 inch x 2 inch 2.33 inch backing zees, fastened to vertical member with 3/8 inch machine bolts with hex nut.
4. Sign panels to be fastened to horizontal members with 3/8 inch - 90 countersunk lockbolt fasteners.
5. Vertical spacing between groups of panels in one marker assembly shall be 4 inches.

**Typical Pole Mount Installation For Class II Marker Assembly**



**Typical Pole Mount Installation For Class I And II Sign Panels**

**General Notes**

1. Signs shall be located in accordance with the details shown on the plans. Special care shall be taken to ensure an unobstructed view of each sign.
2. Brand-name attachment hardware and banding material to be approved by the Engineer.
3. For sign panel fabrication, mounting height and hole spacing for backing zees, see applicable standards.
4. All bolts, nuts and metal washers, unless made of stainless steel, shall be galvanized or cadmium plated.
5. All holes shall be drilled or punched.
6. Banding shall be 1/2 inch x .025 inch minimum stainless steel, round-edge strap with an ultimate breaking strength of 1500 lbs minimum. There shall be a minimum of two bands per panel or assembly except where a single backing angle is used.
7. Panels of 36 inch or greater width must have backing members in addition to brackets. Class II panels of less than 36 inch width and Class I panels of greater than 24 inch width should use pre-threaded brackets similar to alternate section C-C (2 screws).

**Class I and II Sign Assembly Fabrication Notes**

1. Shapes other than the brackets or backing angle shown may be used.
2. Maximum spacing between panels in one assembly shall be 1 1/2 inch.
3. Panels may be installed back-to-back on the same bands.
4. In no case shall bolts of less than 3/16 inch diameter be used for any portion of the assembly.

Computer File Information	
Creation Date: 07/04/12	
Created By: KEN	
Last Modification Date: 07/01/26	
Last Modified By: YSP	
CAD Ver.: ORD 10.12 Scale: Not to Scale Units: English	

Sheet Revisions	
Date:	Comments

**Colorado Department of Transportation**  
**Traffic Safety & Engineering Services**  
 2829 West Howard Place  
 Denver, CO 80204  
 EB

**Typical Pole Mount Sign Installation**

Issued by the Traffic Safety & Engineering Services: July 01, 2026

Standard Plan No.
<b>S-614-20</b>
Standard Sheet No. 1 of 1
Project Sheet Number: