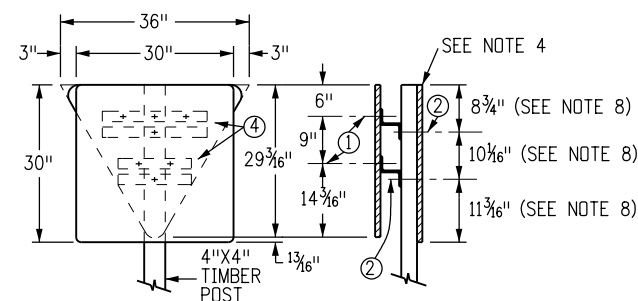
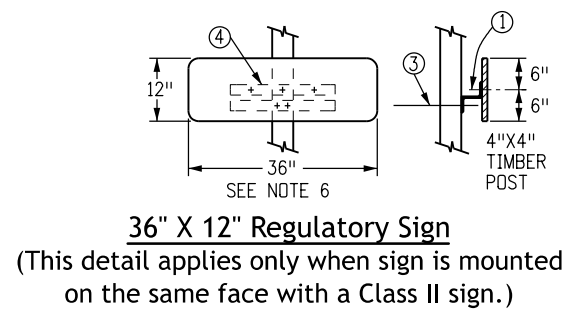


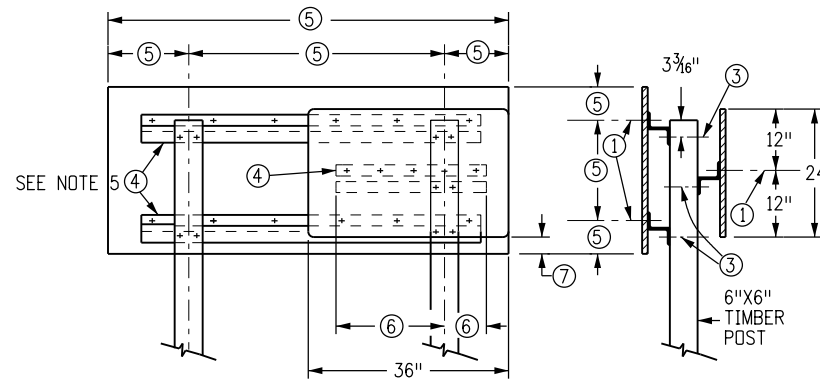
**30" Regulatory Sign and Guide Sign**



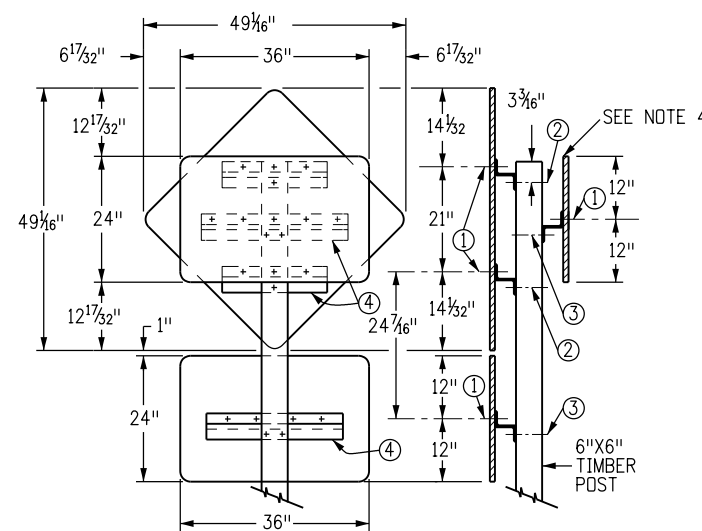
**30" Regulatory Sign and 36" Triangle**



**36" X 12" Regulatory Sign**  
(This detail applies only when sign is mounted on the same face with a Class II sign.)

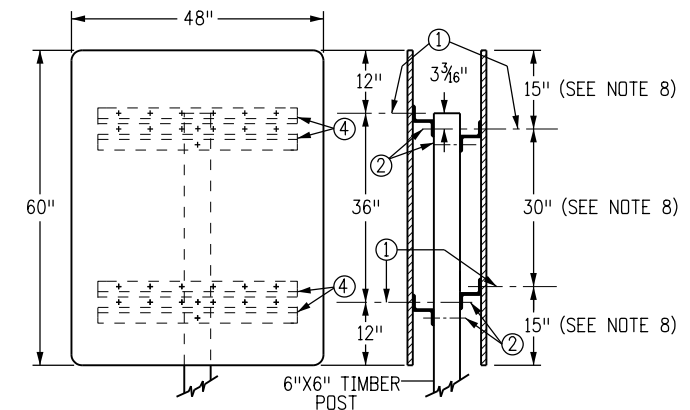


**36" X 24" Regulatory and Guide Sign**

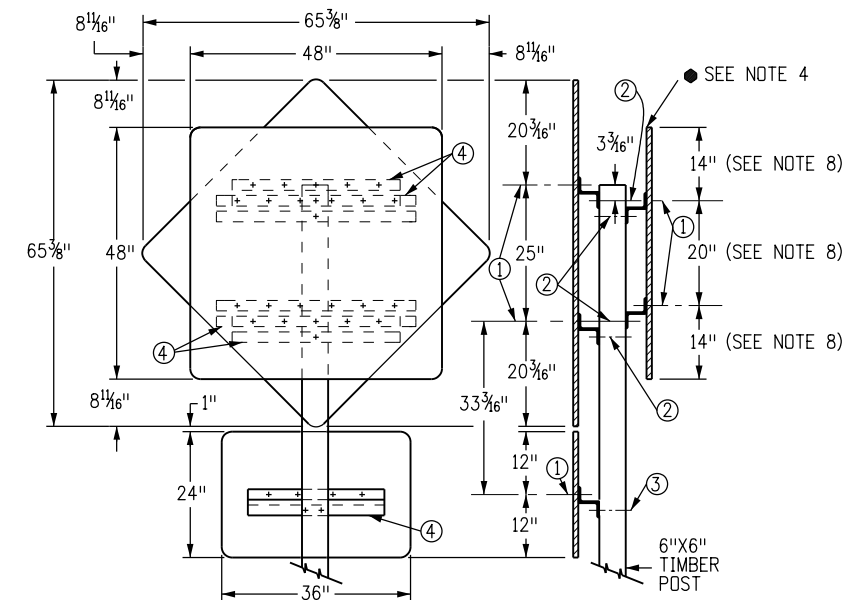


**36" X 24" Regulatory Sign and 36" Diamond with Educational Plaque**

- General Notes**
1. Timber sign posts may only be used for temporary signange during construction. Tubular steel shall be used for permanent installation.
  2. For sign placement see Colorado Standard Plan S-614-1.
  3. For typical Class I, II and III Ground Sign Installation Details See Colorado Standard Plans S-614-2, S-614-3 and S-614-4.
  4. If the back-side of any panel used in the multi-sign installations (do not enter, wrong way, etc.) protrudes beyond the edge of another panel that faces traffic approaching from a normal or proper direction, the entire back-side of the protruding panel shall be painted flat black enamel.
  5. A backing zee size of 3 inch x 2 1/16 inch x 1/4 inch shall be used for most guide sign installations.
  6. 36 inch x 12 inch and all signs 30 inch wide or less become Class II And require backing zee(s) when they are mounted on the same face as a normal Class II sign. One regular 1 foot-8 inch zee will be used for those 15 inches or less in height and 2 regular 1 foot-8 inch zeas for those greater than 15 inches in height.
  7. Other multi-sign installations, not detailed on this standard, may be required by the plans and are to be fabricated in accordance with the general principles of this Standard.
  8. Special non-standard spacing may be required to facilitate assembly of multi-sign installations.



**48" X 60" Regulatory Signs**



**48" X 48" Regulatory Sign and 48" Diamond with Educational Plaque**

**Fabrication Legend**

- ① 3/8-inch 90° countersunk aluminum lockbolt fastener.
- ② 5/8-inch galvanized or cadmium plated machine bold, nut and washers.
- ③ 3/8-inch galvanized or cadmium plated machine bolt, nut and washers.
- ④ 3-inch X 2 1/16-inch X 1/4-inch backing zee.
- ⑤ Guide sign dimension varies.
- ⑥ Dimension varies, panel shall not project beyond the edge of the guide sign.
- ⑦ This Space Not To Exceed 1-inch- 6-inch, Otherwise Center Panel Vertically On The Guide Sign.

<b>Computer File Information</b>		<b>Sheet Revisions</b>		<b>Colorado Department of Transportation</b>  <b>Traffic Safety &amp; Engineering Services</b> 2829 West Howard Place Denver, CO 80204 EB	<b>Typical Multi-Sign Installations</b>	<b>Standard Plan No.</b>	
Creation Date: 07/04/12		Date:	Comments			<b>S-614-22</b>	
Created By: KEN						Standard Sheet No. 1 of 1	
Last Modification Date: 07/01/26						Project Sheet Number:	
Last Modified By: YSP							
CAD Ver.: ORD 10.12 Scale: Not to Scale Units: English							