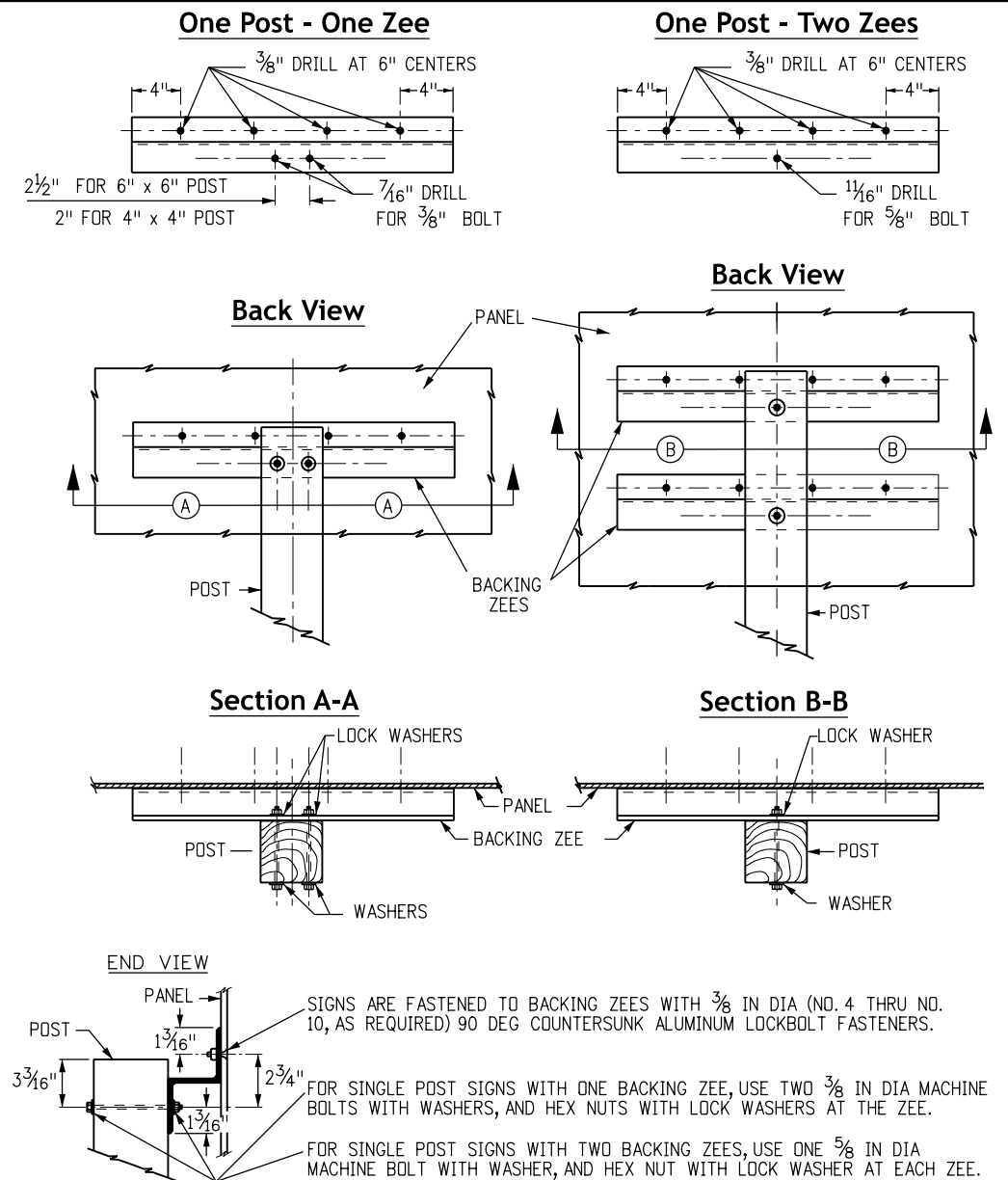


Typical Panel Details

CLASS II PANEL MOUNTING DATA (*TIMBER POSTS)					
SIGN TYPE	A	B	C	D	POST SIZE
DIAMOND, 36" SIDES	49 ¹ / ₁₆ "	14 ¹ / ₃₂ "	21"	—	6" x 6"
48" SIDES	65 ³ / ₈ "	20 ³ / ₁₆ "	25"	—	6" x 6"
60" SIDES	81 ¹ / ₂ "	25 ³ / ₄ "	30"	—	6" x 6"
TRIANGLE, 36" SIDES	29 ³ / ₁₆ "	14 ³ / ₁₆ "	9"	6"	4" x 4"
48" SIDES	38 ³ / ₁₆ "	14 ¹ / ₁₆ "	18"	6"	4" x 4"
60" SIDES	48"	20"	22"	6"	6" x 6"
OCTAGON, 36" x 36"	36"	9"	18"	—	6" x 6"
48" x 48"	48"	12"	24"	—	6" x 6"
CIRCLE, 36" DIAMETER	36"	8"	20"	—	6" x 6"
PENNANT, 48" x 36" SIDES	34"	10 ³ / ₄ "	15"	8 ¹ / ₄ "	4" x 4"
64" x 48" SIDES	45"	12 ¹ / ₂ "	21 ¹ / ₂ "	11"	6" x 6"
PENTAGON, 36" SIDES	35"	6"	20"	9"	4" x 4"
48" SIDES	46 ³ / ₄ "	9"	25 ³ / ₄ "	12"	6" x 6"
RECTANGLE					
WIDTH	HEIGHT				
36"	24"	24"	12"	—	4" x 4"
48"	24"	24"	12"	—	6" x 6"
36" to 60"	30"	30"	9"	12"	6" x 6"
36" to 60"	36"	36"	9"	18"	6" x 6"
36" to 60"	42"	42"	9"	24"	6" x 6"
36" to 60"	48"	48"	12"	24"	6" x 6"
48"	54"	54"	12"	30"	6" x 6"
48" to 60"	60"	60"	12"	36"	6" x 6"
SUPPLEMENTAL PANELS					
RECTANGLE, 24" x 18"	18"	9"	—	—	4"x4" or 6"x6"
48" x 18"	18"	9"	—	—	6" x 6"
24" x 24"	24"	12"	—	—	6" x 6"
36" x 24"	24"	12"	—	—	6" x 6"
48" x 36"	36"	9"	18"	—	6" x 6"

* For additional Class II sizes that utilize steel posts, see Standard Plan S-614-8.



Typical Backing Zees

General Notes

- Timber sign posts may only be used for temporary signage during construction. Tubular steel sign posts shall be used for permanent installations.
- Class II sign panels are those that require one to two backing zees and are less than 72 inches in height. Class II sign panels may use more than two backing zees when attached to a Class III assembly. Class II sign panels shall be 0.10 inch minimum thickness single sheet aluminum.
- Z-Bar length shall be 3 inches ($\pm 1/2$ inch) short of the edge of the sign on both sides.
- For tubular steel post information, see Standard Plan S-614-08.
- Backing zees are 3 inch x 2¹/₁₆ inch x 2.33, 6061-TB aluminum alloy weighing 2.33 pounds per foot.
- For sign placement, see Standard Plan S-614-1.
- All signs shall be fabricated using retro-reflective sheeting conforming to ASTM D956. the type shall be as directed in the Standard Specifications, Section 713 and/or as shown on the plans.
- Bolts, nuts, and metal washers shall be galvanized or cadmium plated.
- Vertical spacing between panels shall be 1 inch to 1¹/₂ inches.
- Washers on timber posts shall be 1¹/₂ inches diameter.

Computer File Information	
Creation Date: 07/04/12	
Created By: Lee	
Last Modification Date: 07/01/26	
Last Modified By: YSP	
CAD Ver.: ORD 10.12 Scale: Not to Scale Units: English	

Sheet Revisions	
Date:	Comments

Colorado Department of Transportation
Traffic Safety & Engineering Services
 2829 West Howard Place
 Denver, CO 80204
 EB

Class II Signs
 Issued by the Traffic Safety & Engineering Services: July 01, 2026

Standard Plan No.
S-614-3
Standard Sheet No. 1 of 1
 Project Sheet Number: