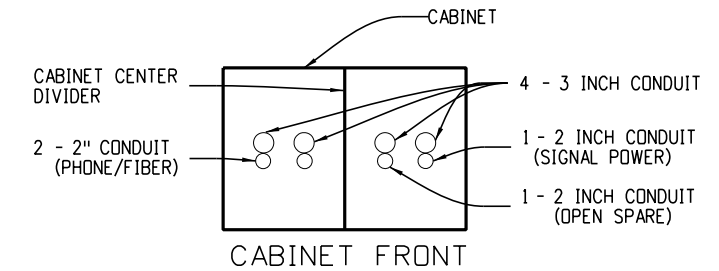


**Signal Pad Detail**  
Top View  
(Not to scale)

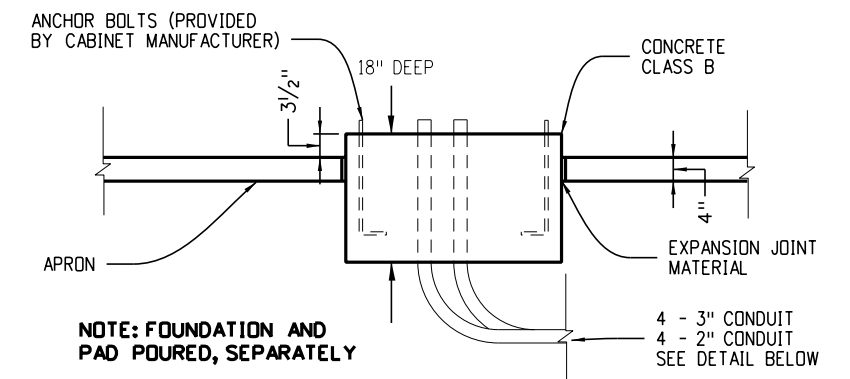
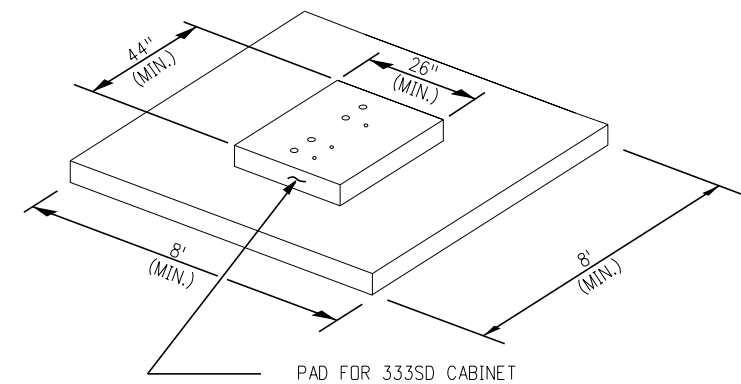
**General Notes**

1. The concrete pad surrounding the cabinet base shall be Class B mix. Glass or synthetic fibers shall be incorporated into the concrete mix. The dosage rate of the glass or synthetic fibers shall be the dosage rate recommended by the manufacturer of the glass or synthetic fibers. All work involving the construction of the concrete pad for the signal controller cabinet will not be paid for separately, but shall be included in cost of the controller cabinet pay item.



**CABINET FRONT**

**Conduit Detail**  
Cross Section  
(Not to scale)



**Foundation Cross Section**  
(Not to scale)

**Cast-In-Place Foundation**

Computer File Information	
Creation Date:	07/04/12
Created By:	KEN
Last Modification Date:	07/01/26
Last Modified By:	GLY
CAD Ver.:	ORD 10.12 Scale: Not to Scale Units: English

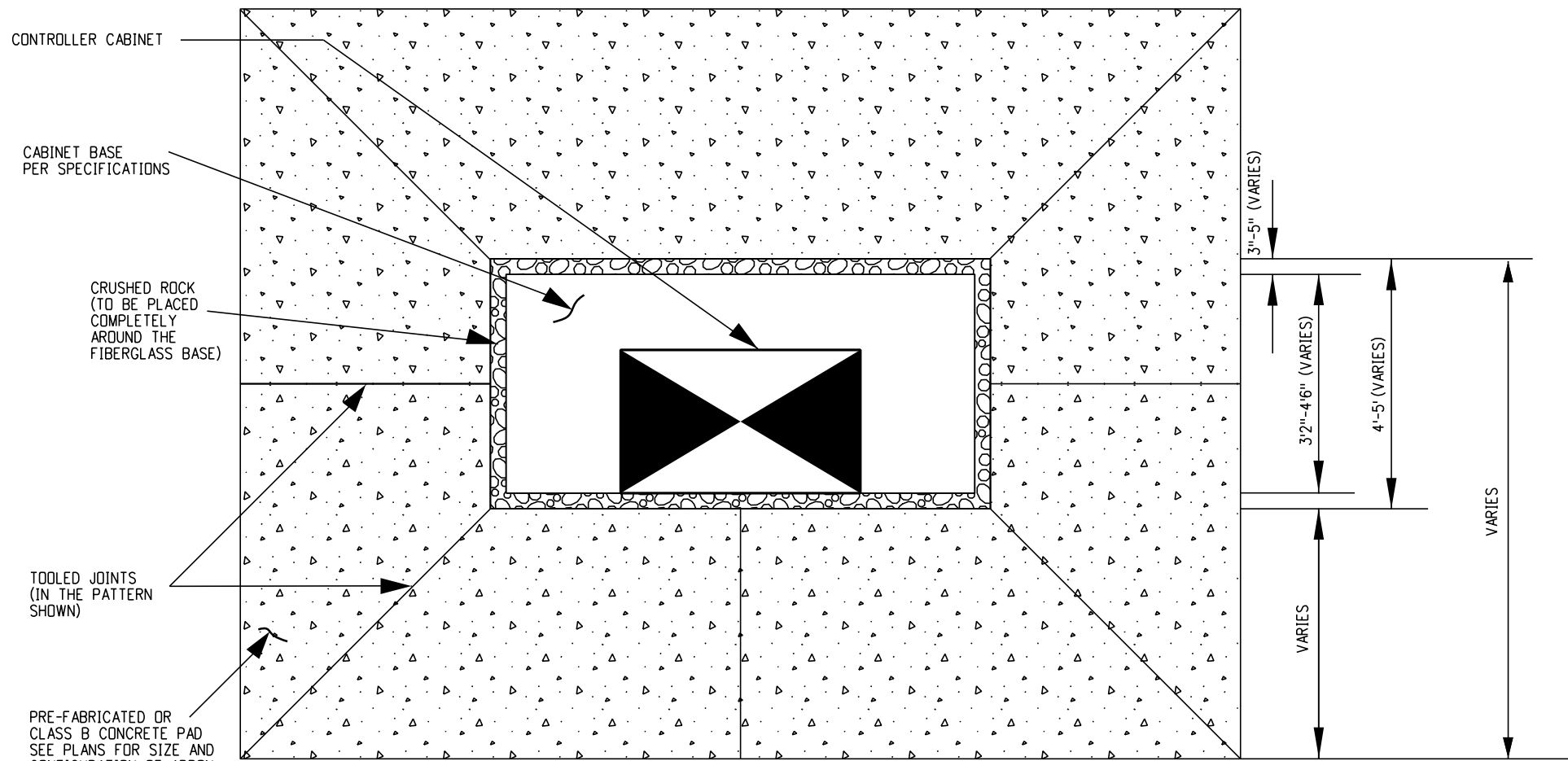
Sheet Revisions	
Date:	Comments

**Colorado Department of Transportation**  
Traffic Safety & Engineering Services  
2829 West Howard Place  
Denver, CO 80204

**Cabinet Foundation Detail**

Issued by the Traffic Safety & Engineering Services: July 01, 2026

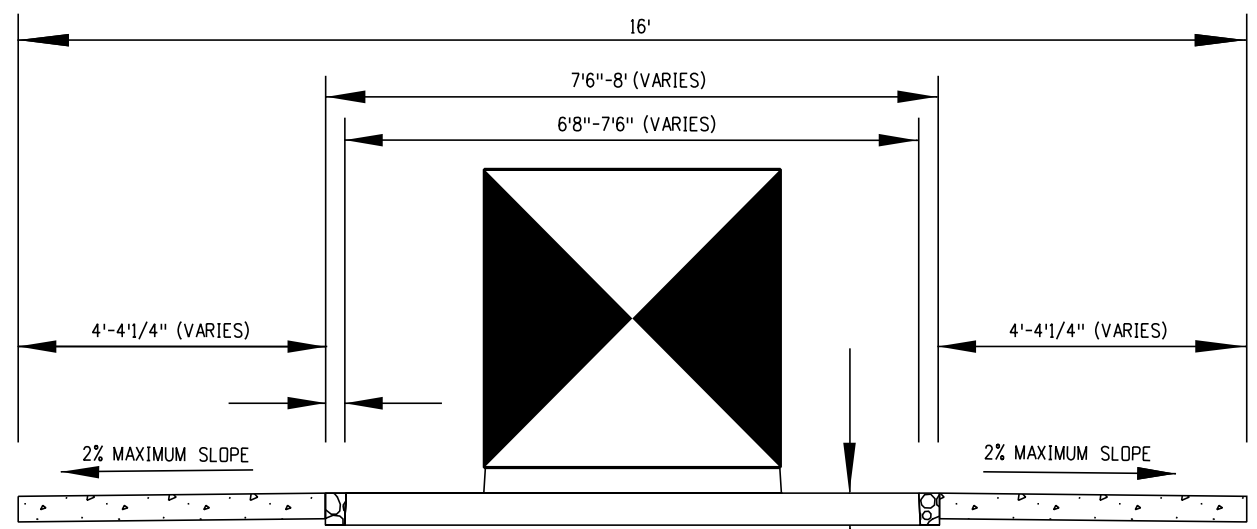
Standard Plan No.
<b>S-614-42</b>
Standard Sheet No. 1 of 4
Project Sheet Number:



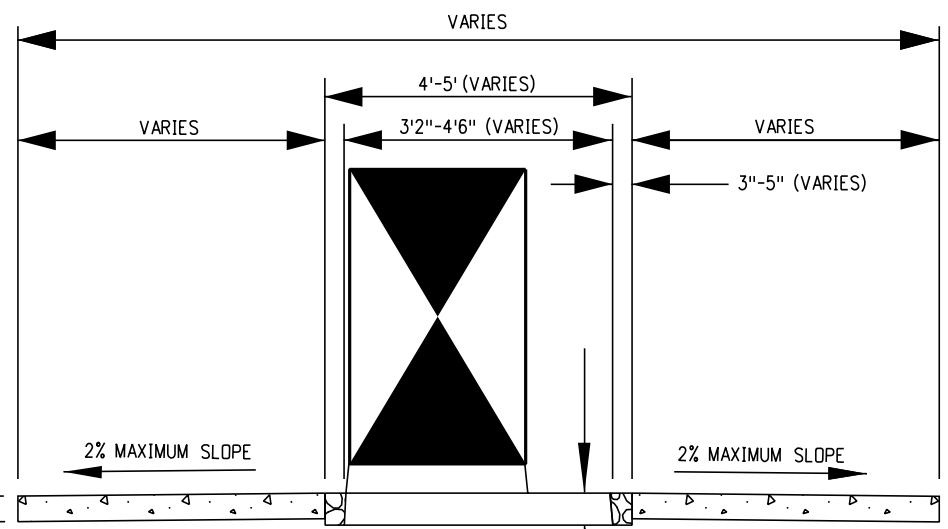
**Concrete Pad Notes**

1. Contractor shall install pre-fabricated or cast-in-place, fiberglass concrete pad. See Specification for more information on the concrete material.
2. Contractor shall place a 4-inch thick concrete pad (cast-in-place or pre-fabricated), as indicated in the plans, or as directed by the Engineer. The concrete pad shall slope away from the fiberglass base at a maximum 2% slope.
3. The concrete pad surrounding the cabinet base shall be Class B mix. Glass or synthetic fibers shall be incorporated into the concrete mix. The dosage rate of the glass or synthetic fibers shall be the dosage rate recommended by the manufacturer of the glass or synthetic fibers. All work involving the construction of the concrete pad for the signal controller cabinet will not be paid for separately, but shall be included in the cost of the controller cabinet pay item.
4. Pre-fabricated concrete base dimensions shown vary per manufacturer's specifications.
5. Pre-fabricated concrete base manufacturer shall provide connection points in the base for the specific controller cabinet specified in the plans.

**Top View**



**Front View**



**Side View**

**Pre-Fabricated Fiberglass Foundation**

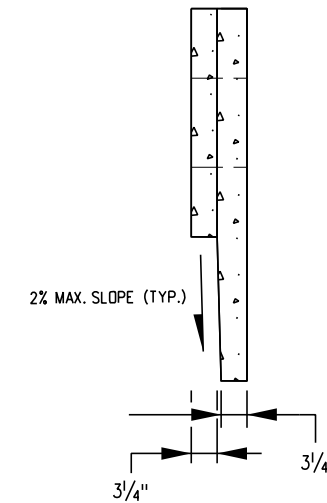
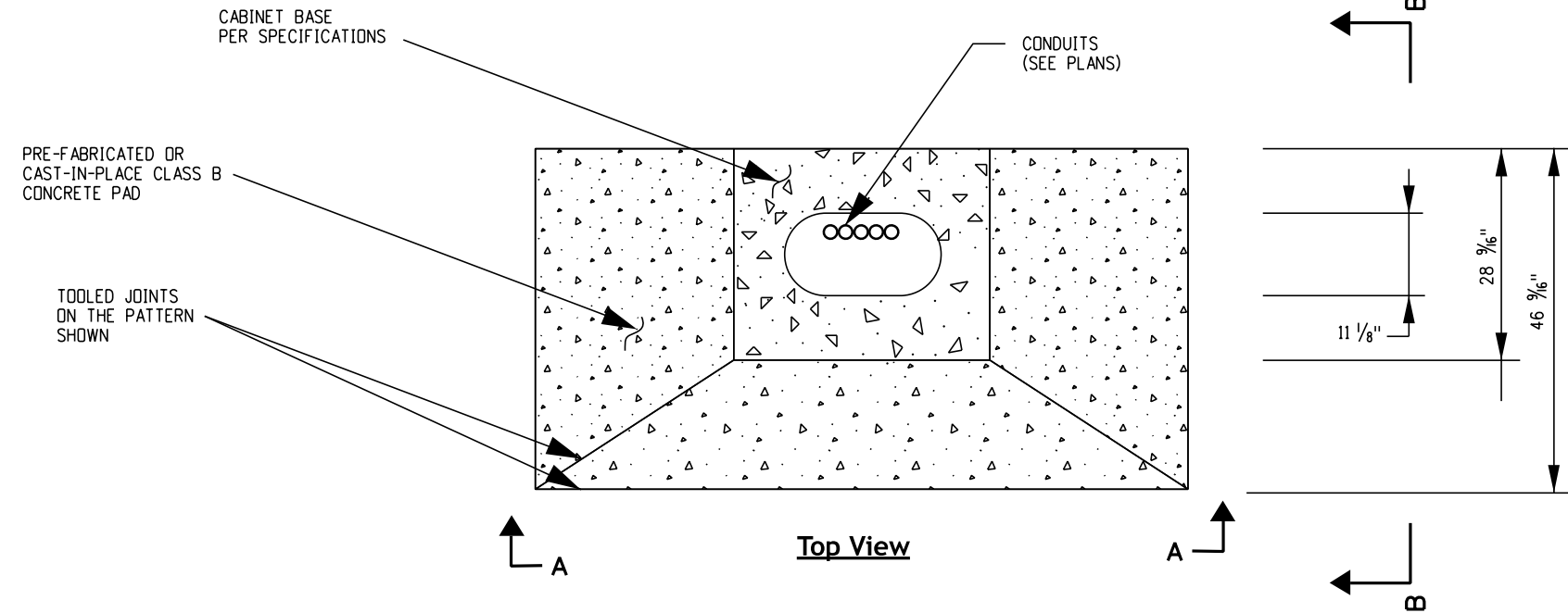
Computer File Information	
Creation Date:	07/04/12
Created By:	KEN
Last Modification Date:	07/01/26
Last Modified By:	GLY
CAD Ver.:	ORD 10.12 Scale: Not to Scale Units: English

Sheet Revisions	
Date:	Comments

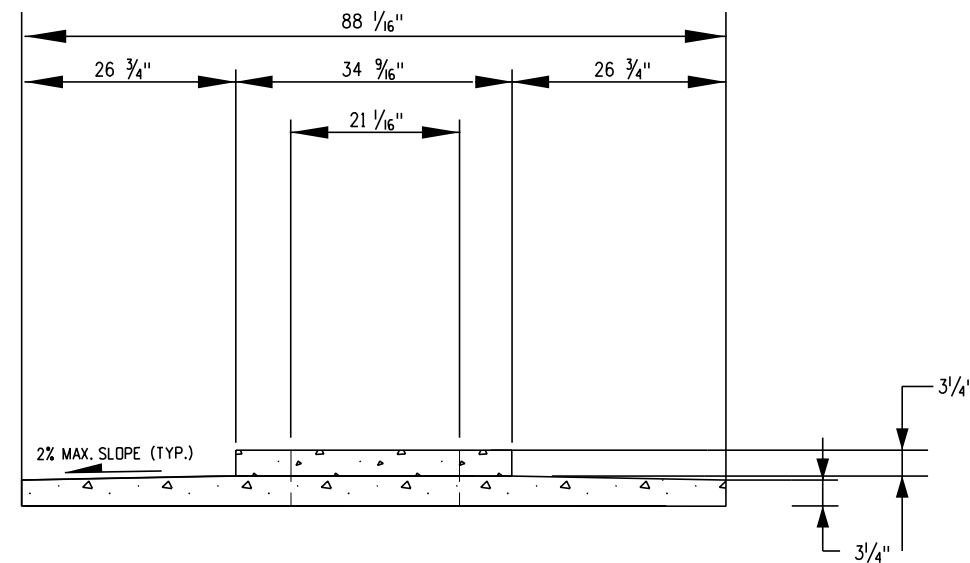
**Colorado Department of Transportation**  
**Traffic Safety & Engineering Services**  
 2829 West Howard Place  
 Denver, CO 80204  
 EB

**Cabinet Foundation Detail**  
 Issued by the Traffic Safety & Engineering Services: July 01, 2026

**Standard Plan No. S-614-42**  
**Standard Sheet No. 2 of 4**  
 Project Sheet Number:



**Section B-B**



**Section A-A**

**Concrete Pad Notes**

1. Contractor shall install pre-fabricated or cast-in-place concrete pad. See Specification for more information on the concrete material.
2. Contractor shall place a 3/4-inch thick concrete pad (cast-in-place or pre-fabricated), as indicated in the details, or as directed by the Engineer. The concrete pad shall slope away from the fiberglass base at a maximum 2% slope.
3. The concrete pad surrounding the pre-fabricated or cast-in-place base shall be Class B mix. Glass or synthetic fibers shall be incorporated into the concrete mix. The dosage rate of the glass or synthetic fibers shall be the dosage rate recommended by the manufacturer of the glass or synthetic fibers. All work involving the construction of the concrete pad for the signal controller cabinet will not be paid for separately, but shall be included in the cost of the controller cabinet pay item.
4. Foundations shall be located to provide 34-inch minimum clearance between face-of-curb and any portion of the controller cabinet.
5. In unpaved areas, the top foundation for Models 332 - 334 controller cabinets shall be three (3) inches above surrounding grade.
6. Fiberglass base dimensions shown vary per manufacturer's specifications.


**Foundation Details**

For Model 332 through 334 controller cabinets

Computer File Information	
Creation Date:	07/04/12
Created By:	KEN
Last Modification Date:	07/01/26
Last Modified By:	GLY
CAD Ver.: ORD 10.12 Scale: Not to Scale Units: English	

Sheet Revisions	
Date:	Comments

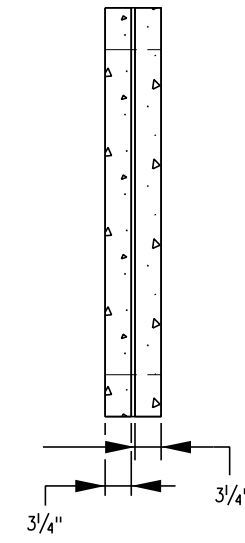
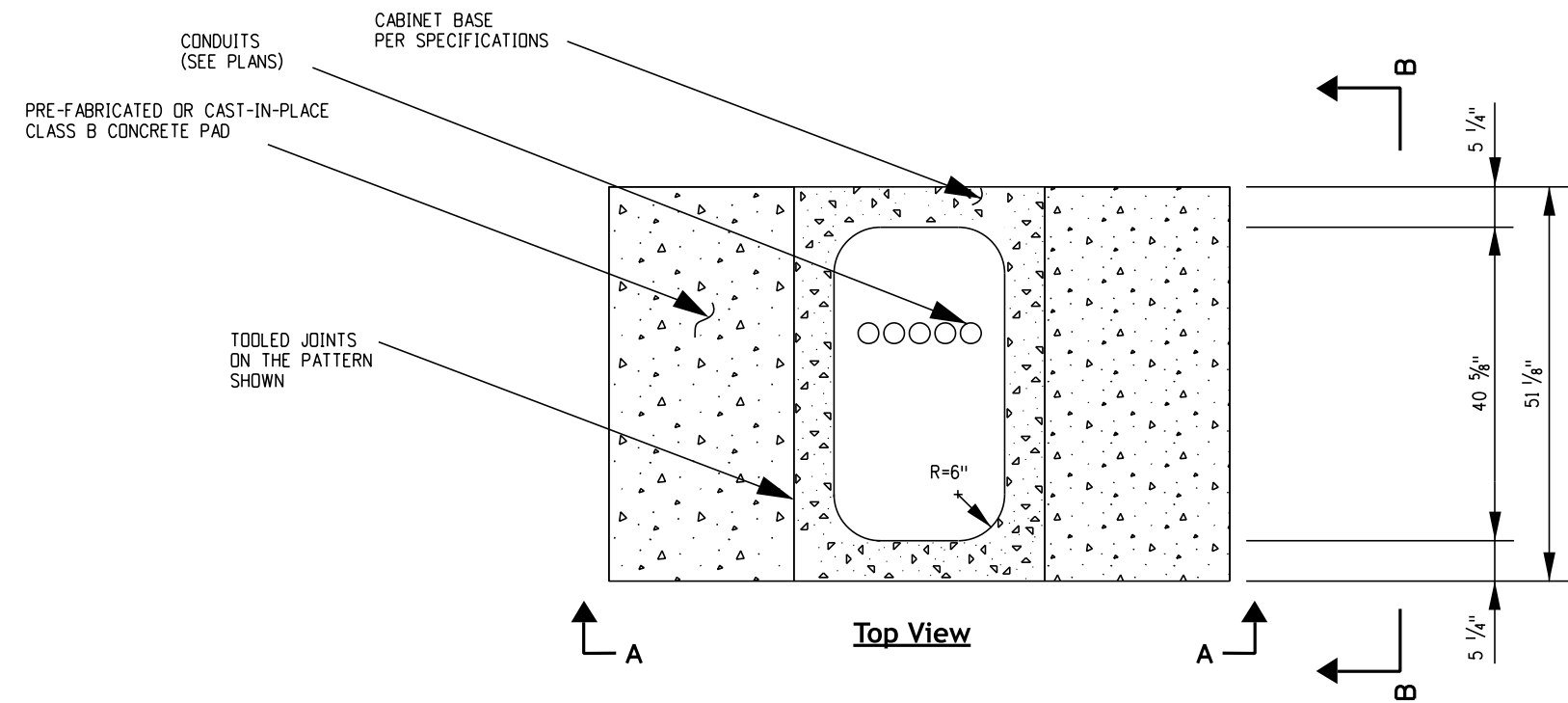
**Colorado Department of Transportation**  
**Traffic Safety & Engineering Services**  
 2829 West Howard Place  
 Denver, CO 80204



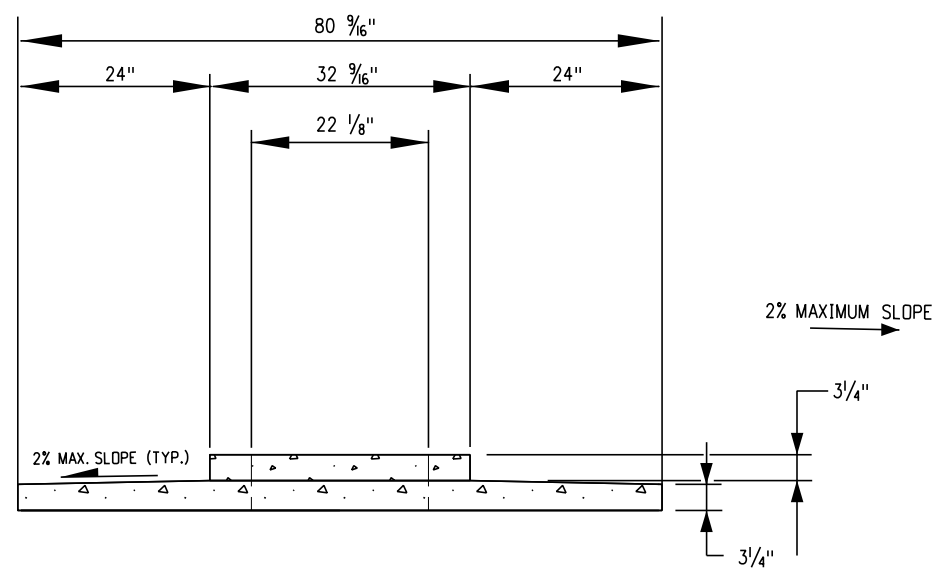
**Cabinet Foundation Detail**

Issued by the Traffic Safety & Engineering Services: July 01, 2026

Standard Plan No.
<b>S-614-42</b>
Standard Sheet No. 3 of 4
Project Sheet Number:



**Section B-B**



**Section A-A**

**Concrete Pad Notes**

1. Contractor shall install pre-fabricated or cast-in-place concrete pad. See Specification for more information on the concrete material.
2. Concrete shall place a 3/4-inch thick concrete pad (cast-in-place or pre-fabricated), as indicated in the details, or as directed by the Engineer. The concrete pad shall slope away from the fiberglass base at a maximum 2% slope.
3. The concrete pad surrounding the pre-fabricated or cast-in-place base shall be Class B mix. Glass or synthetic fibers shall be incorporated into the concrete mix. The dosage rate of the glass or synthetic fibers shall be the dosage rate recommended by the manufacturer of the glass or synthetic fibers. All work involving the construction of the concrete pad for the signal controller cabinet will not be paid for separately, but shall be included in the cost of the controller cabinet pay item.
4. Foundations shall be located to provide 34-inch minimum clearance between face-of-curb and any portion of the controller cabinet.
5. In unpaved areas, the top foundation for Models 332D and 333JP controller cabinets shall be three (3) inches above surrounding grade.
6. Fiberglass base dimensions shown vary per manufacturer's specifications.

**Foundation Details**  
For Model 332D - 333JP cabinets

Computer File Information	
Creation Date:	07/04/12
Created By:	KEN
Last Modification Date:	07/01/26
Last Modified By:	GLY
CAD Ver.:	ORD 10.12 Scale: Not to Scale Units: English

Sheet Revisions	
Date:	Comments

**Colorado Department of Transportation**  
**Traffic Safety & Engineering Services**  
 2829 West Howard Place  
 Denver, CO 80204  
 EB

**Cabinet Foundation Detail**  
 Issued by the Traffic Safety & Engineering Services: July 01, 2026

**Standard Plan No.**  
**S-614-42**  
**Standard Sheet No. 4 of 4**  
 Project Sheet Number: