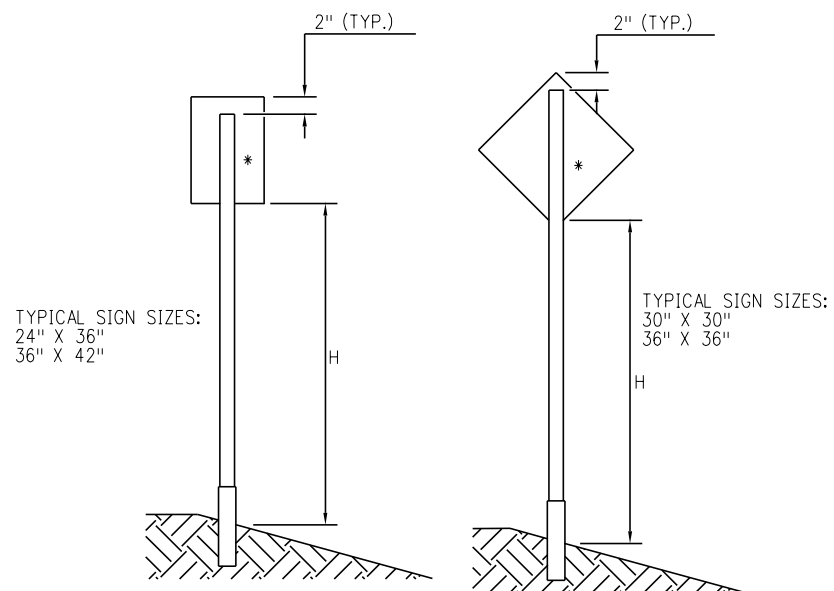


General Notes

- All square tubing sign post requirements are based on a 10 or 12-gauge thickness, ASTM A570 grade 50 steel, a minimum yield strength of 60,000 psi and a 70 mph wind load. All U-channel sign posts requirements are based on a minimum yield strength of 80,000 psi and 85 mph wind load.
- Steel posts, base posts, and slip bases for aluminum panel signs shall be selected from the CDOT Approved Product List.
- Base posts shall not extend more than 4 inches above ground level and shall be of the same weight/gauge and type as the sign post.
- Intermixing of U-channel and square tubing posts, posts of different weights/gauges or product brands is prohibited.
- Supplemental signs shall not be attached directly to primary panels.
- Spacing between supplemental panels and primary panels shall not exceed 6 inches.
- Sign panels placed parallel to traffic shall be mounted on a multi-directional breakaway system. (see Standard Plan S-630-4, Sheet 2)
- An approved slip base is required with the double post and triple post installation. (see Standard Plan S-630-4, Sheet 2).
- See manufacturer's drawings for specific assembly information (post-to-base post overlap), including types of nuts, bolts, washers, and other parts required for product use.
- Lap-splice or multi-directional slip base may be used. See Standard Plan S-630-4, Sheet 2.

Legend

- See General Note 1.
- ▲ See General Note 4.
- △ See General Note 8.
- See General Note 9.
- See General Note 10.



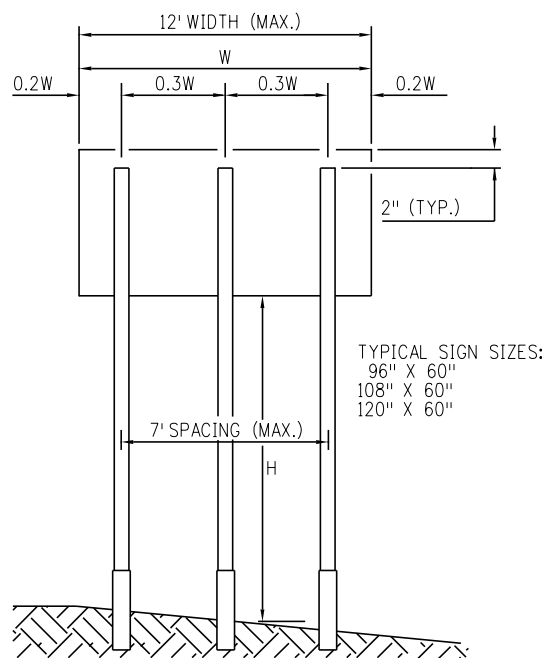
* SINGLE POST SHALL BE PLACED IN THE CENTER OF THE SIGN

● Sign Post Requirements

POST TYPE	POST SIZE	MAX. CLEAR HEIGHT, H (FT.)	MAX. SIGN AREA (SF)
SQUARE TUBING	2.25" X 2.25" (12 GA.)	10	10.5
SQUARE TUBING	1.75" X 1.75" (12 GA.)	9	5
SQUARE TUBING	2.00" X 2.00" (12 GA.)	9	8
SQUARE TUBING	2.25" X 2.25" (12 GA.)	9	10.5
SQUARE TUBING	1.75" X 1.75" (12 GA.)	8	6
SQUARE TUBING	2.00" X 2.00" (12 GA.)	8	9
SQUARE TUBING	1.75" X 1.75" (12 GA.)	7	7
SQUARE TUBING	2.00" X 2.00" (12 GA.)	7	10

Single Post Installation

(Total sign area not to exceed 10.5 sf)

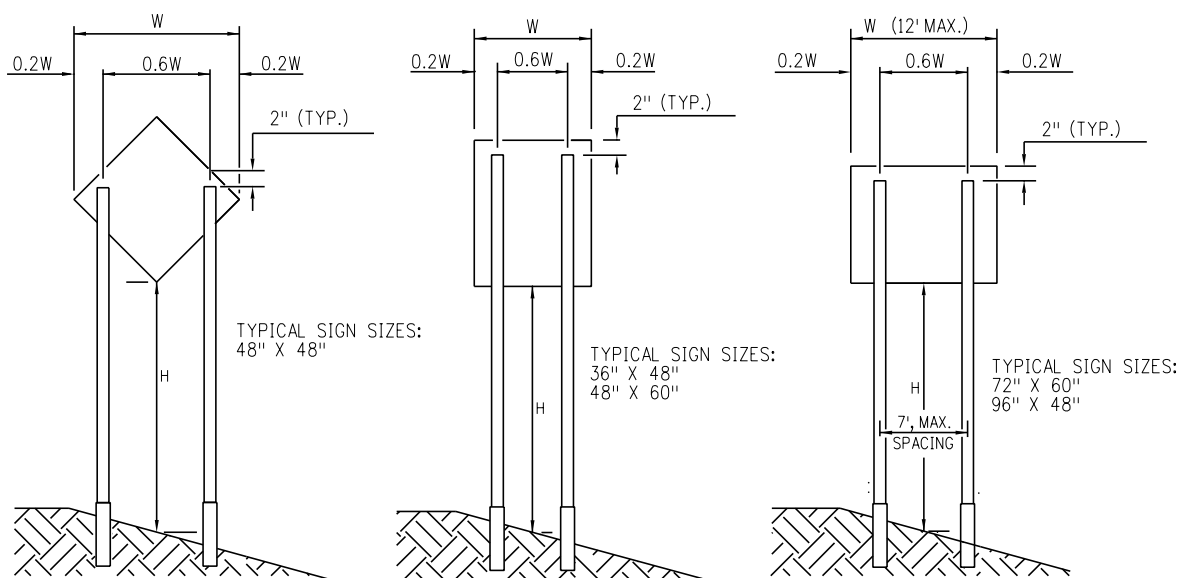


● Sign Post Requirements

POST TYPE	POST SIZE	MAX. CLEAR HEIGHT, H (FT.)	MAX. SIGN AREA (SF)
△ U-CHANNEL	3 LB./FT.	11	36
△ SQUARE TUBING	2.50" X 2.50" (10 GA.)	9	45
△ SQUARE TUBING	2.50" X 2.50" (10 GA.)	7	50
○ SQUARE TUBING	2.50" X 2.50" (10 GA.)	11	36
○ SQUARE TUBING	2.50" X 2.50" (10 GA.)	9	45

Triple Post Installation

(Total sign area not to exceed 50 sf)

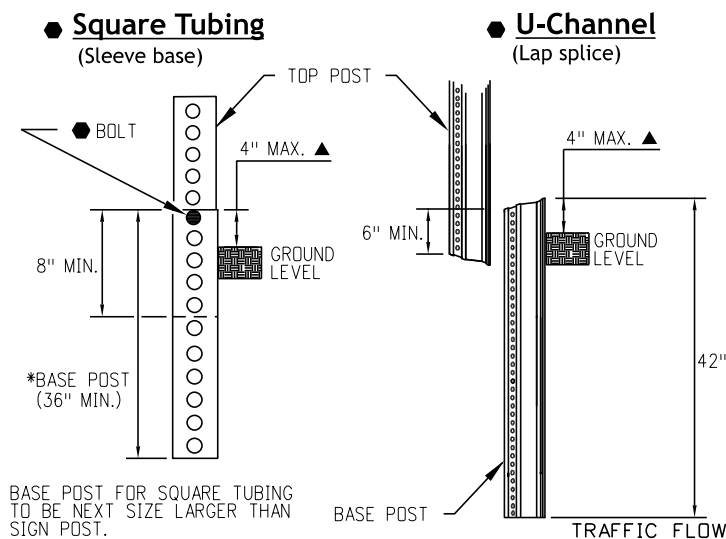


● Sign Post Requirements

POST TYPE	POST SIZE	MAX. CLEAR HEIGHT, H (FT.)	MAX. SIGN AREA (SF)
SQUARE TUBING	2.25" X 2.25" (12 GA.)	11	13
SQUARE TUBING	2.25" X 2.25" (12 GA.)	9	15
SQUARE TUBING	2.25" X 2.25" (12 GA.)	8	16
SQUARE TUBING	2.25" X 2.25" (12 GA.)	7	20
△ U-CHANNEL	3 LB./FT.	11	25
△ U-CHANNEL	3 LB./FT.	9	30
△ SQUARE TUBING	2.50" X 2.50" (10 GA.)	7	36

Double Post Installation

(Total sign area not to exceed 30 sf)



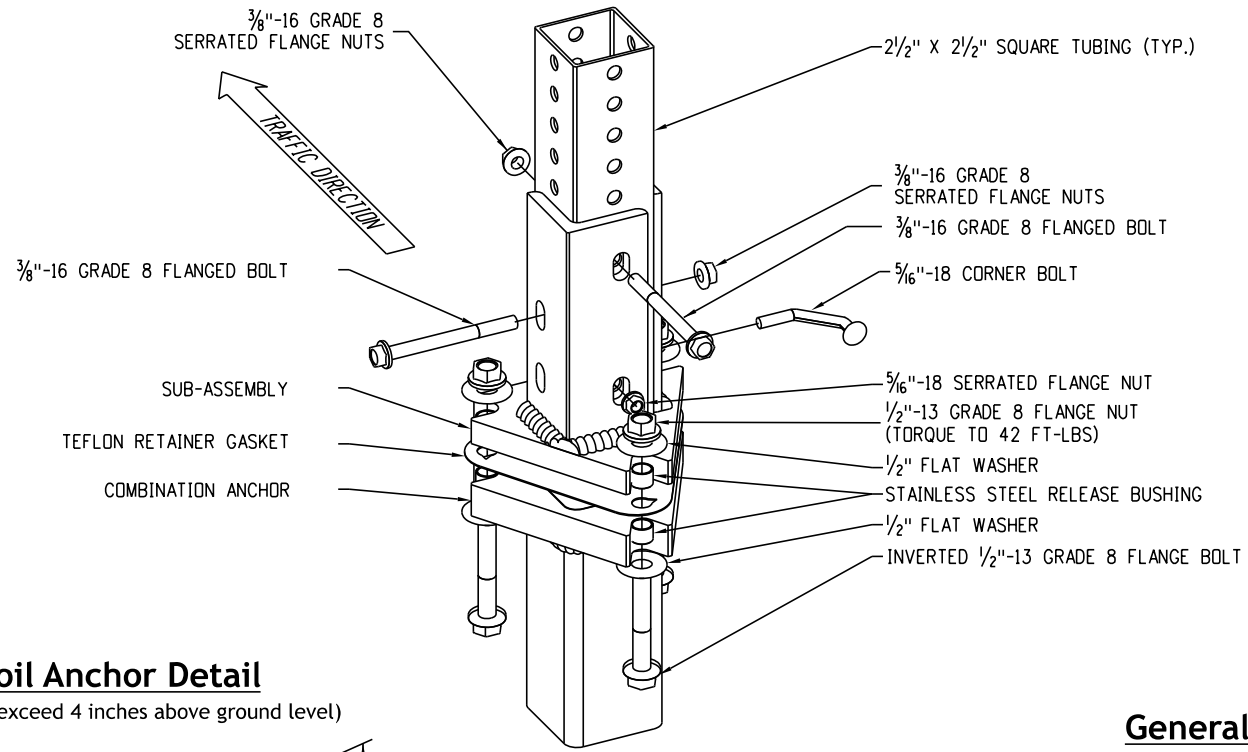
* BASE POST FOR SQUARE TUBING TO BE NEXT SIZE LARGER THAN SIGN POST.

Base Post Installation Details for Square Tubing and U-Channel Systems

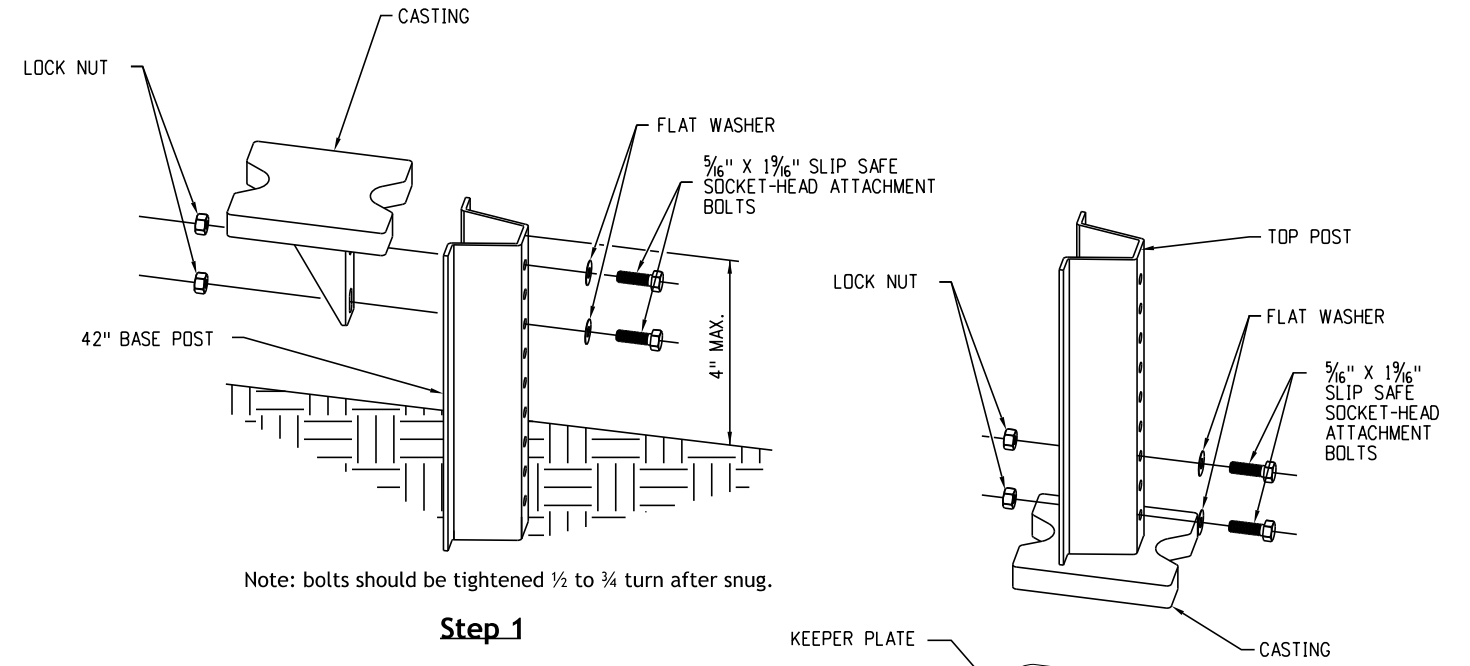
(See Standard Plan S-630-4, Sheet 2 for multi-directional slip base systems)

Computer File Information		Sheet Revisions		Colorado Department of Transportation Traffic Safety & Engineering Services 2829 West Howard Place Denver, CO 80204 EB	Steel Sign Support (Temporary) Installation Details	Standard Plan No.	
Creation Date: 07/04/12		Date:	Comments			S-630-4	Standard Sheet No. 1 of 2
Created By: KEN					Project Sheet Number:		
Last Modification Date: 07/01/26							
Last Modified By: GLY							
CAD Ver.: ORD 10.12 Scale: Not to Scale Units: English							
Issued by the Traffic Safety & Engineering Services: July 01, 2026							

Square Tubing Slip Base

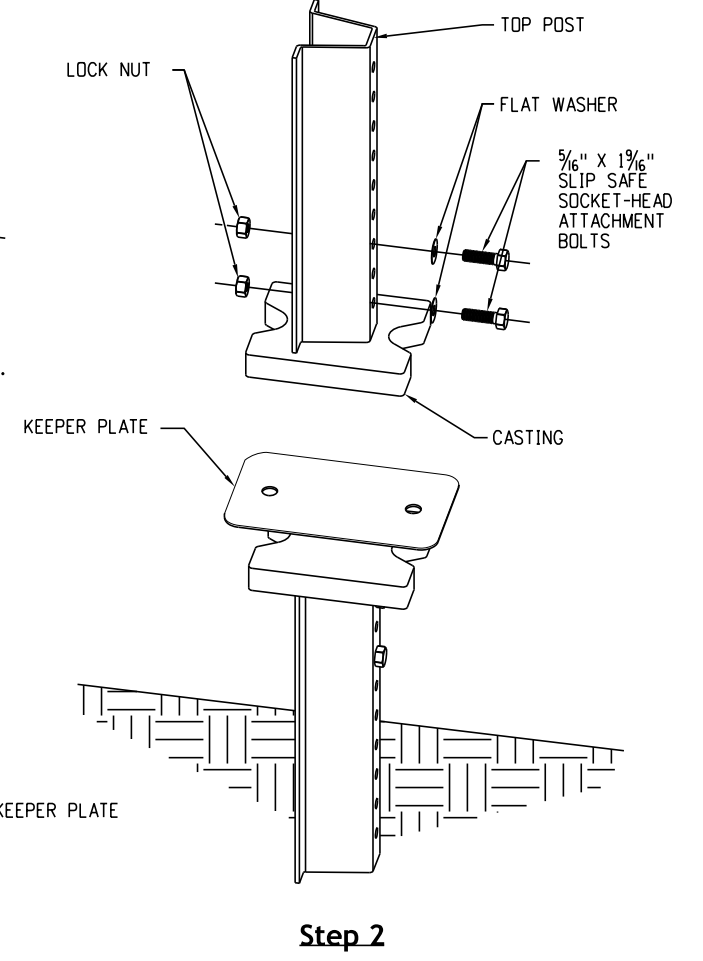


U-Channel Slip Base

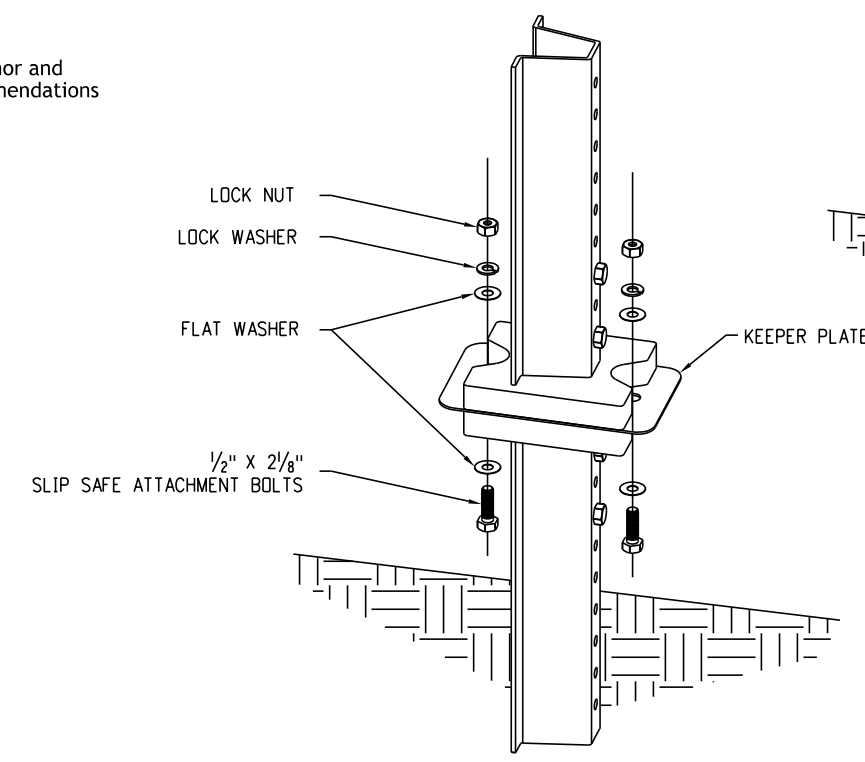


Note: bolts should be tightened 1/2 to 3/4 turn after snug.

Step 1



Step 2



Note: tighten nut 1/4 to 1/2 turn after snug.

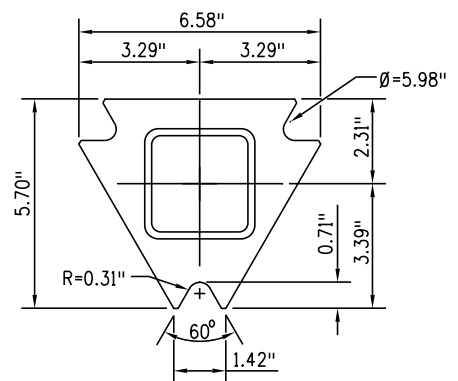
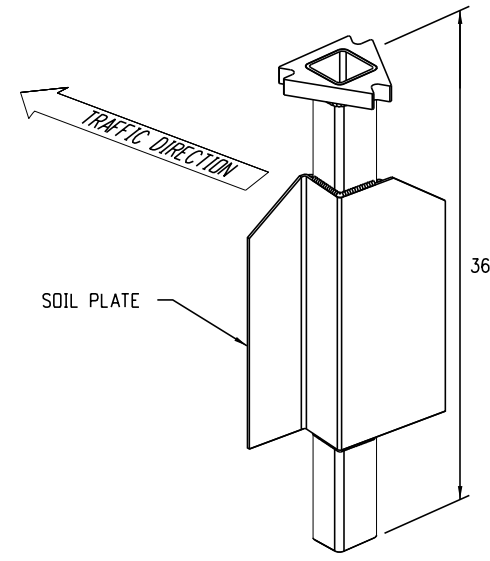
Step 3

General Note:

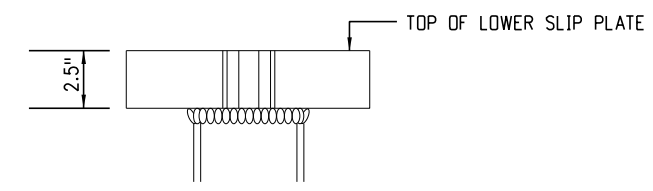
The contractor shall install the soil anchor and slip base per the manufacturer's recommendations without additional compensation.

Soil Anchor Detail

(Not to exceed 4 inches above ground level)



Anchor Top View



Anchor Front View

Multi-Directional Slip Base Post Details

Computer File Information	
Creation Date:	07/04/12
Created By:	KEN
Last Modification Date:	07/01/26
Last Modified By:	GLY
CAD Ver.: ORD 10.12 Scale: Not to Scale Units: English	

Sheet Revisions	
Date:	Comments

Colorado Department of Transportation
Traffic Safety & Engineering Services
 2829 West Howard Place
 Denver, CO 80204
 EB

Steel Sign Support (Temporary) Installation Details
 Issued by the Traffic Safety & Engineering Services: July 01, 2026

Standard Plan No. S-630-4
Standard Sheet No. 2 of 2
 Project Sheet Number: