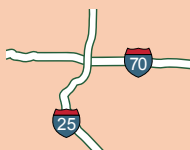




COLORADO
Department of Transportation

Colorado Driving

Tips For Safe Travel

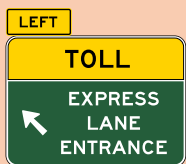
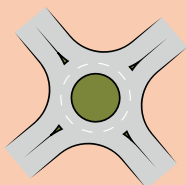


Plan Ahead



- ◀ Traffic delays are common on weekends and holidays.
- ◀ Check **COtrip.org** for traffic information.
- ◀ Weather can change quickly, especially in mountains.
- ◀ Always check forecast before you go.
- ◀ Don't get stranded. Avoid driving during storms.

Roundabouts and Toll Lanes



- ◀ Roundabouts are common. When a gap in traffic appears, merge into roundabout and proceed to your exit.
- ◀ In a multi-lane roundabout, you must yield to both lanes of traffic.
- ◀ You may use Express Lanes for a faster trip in exchange for an electronic toll.
- ◀ Fees apply in metro Denver and along I-70 near Idaho Springs.

Use Caution



- ◀ Watch for wildlife, especially at night.
- ◀ Scan road shoulders and look for eyeshine.
- ◀ In snow, always use headlights, allow extra space, go slow and anticipate turns.
- ◀ Give plow trucks room to work. Avoid passing.
- ◀ Pack extra food, water, blankets, etc.

For More information Visit

COtrip.org

Colorado State Laws



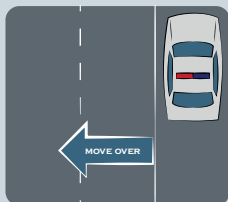
Cell Phone Law

- Texting while driving is illegal.



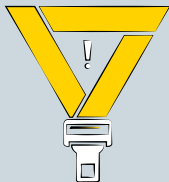
DUI Laws

- Don't drive impaired.
- DUI's include alcohol, cannabis and other drugs.



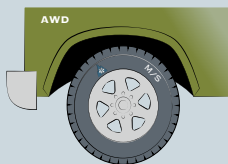
Move Over Law

- Move over for stopped emergency vehicles ahead.
- If unsafe to move over, slow down.



Seat Belt Law

- You must buckle your seat belt.



Traction Law

- Often in effect during winter storms.
- Required: AWD, 4WD or tires with the mud/snow (M+S) or snowflake designations.
- Tires must have a minimum of 3/16" tread.
- These requirements in effect on I-70 in mountains all winter, regardless of weather.



Bicycle Law

- Motorists must give bicyclists at least three feet of clearance when passing.