



## Meet USDOT Secretary Elaine Chao

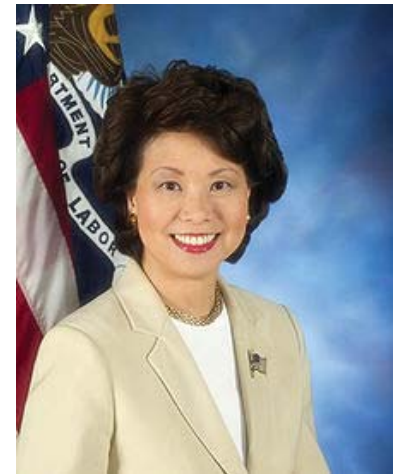
Elaine L. Chao was sworn in by Vice President Pence to serve as the 18th Secretary of Transportation on January 31st, 2017. Chao noted at her confirmation that the highway trust fund spends \$10 billion each year more than it collects. Chao, who is familiar with Washington and Congress, will play a big role in the President's proposed \$1 trillion infrastructure program that includes improvements to airports, bridges, and roads.

Chao was born in Taipei, Taiwan. Her family later moved to New York City where her father founded a shipping company. She earned a Bachelor of Arts degree in Economics from Mount Holyoke College in South Hadley, Massachusetts, and an MBA from Harvard Business School. Chao then worked in the banking industry where she was selected for a White House Fellowship during the Reagan administration.

In 1986, Chao became Deputy Administrator of the Maritime Administration in the U.S. Department of Transportation. From 1988 to 1989, she served as Chairwoman of the Federal Maritime Commission.

In 1989, President George H. W. Bush called on Chao to serve as Deputy Secretary of Transportation. From 1991 to 1992, she was the Director of the Peace Corps. She then was named Secretary of Labor for George W. Bush and served for 8 years.

In 1993, Chao married Mitch McConnell the senior U.S. Senator for Kentucky, and current Senate Majority Leader. She also serves as a director on a number of non-profit and corporate boards, including the Institute of Politics at the Harvard Kennedy School of Government, Wells Fargo, New York-Presbyterian Hospital, and Dole Foods among others. In 2011, she was awarded the Woodrow Wilson Award for Public Service.



*USDOT Secretary Elaine Chao*

## CO Funding Challenges

Governor John Hickenlooper delivered the State of the State Address to kick off the 2017 legislative session. His address was focused on the state's funding conundrum. Governor Hickenlooper pointed out that while Colorado enjoys a strong economy and a historical low in unemployment, more funding is desperately needed for transportation and other critical services that the state provides to be used on these critical needs. The search for additional funding and new revenue sources for transportation is one of the primary topics at the capitol.

*....cont on page 2*

## Colorado Bridges

48% need preventative  
maintenance

5% are structurally  
deficient

# CO Funding Challenges

....cont from page 1

## Population vs. Lane Miles

Since the early 1990's  
53% more people  
but only

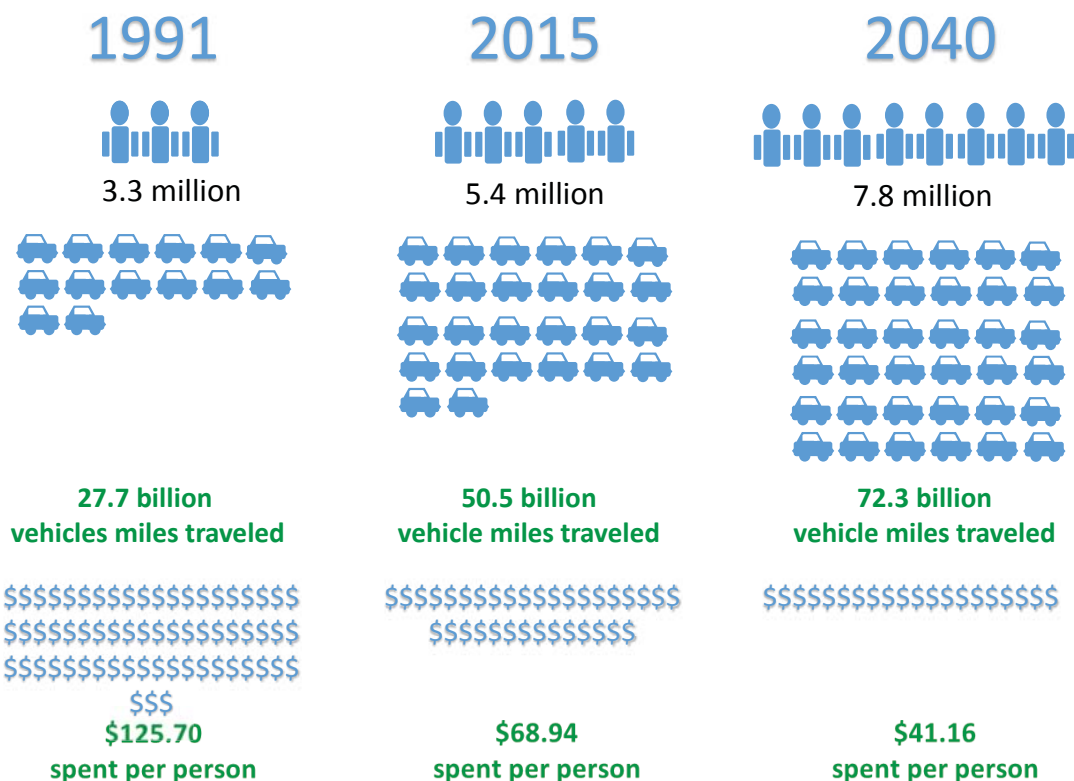
2% more miles of hwy built

With \$9 billion in unfunded needs for transportation, the time to act is apparent. There are many factors that have contributed to this massive shortfall including dramatic increases in population and vehicle miles traveled coupled with a gas tax, last raised more than 25 years ago.

## Wear and Tear

### Potholes/Rough Roads

cost drivers  
up to  
\$300/yr in repairs



## Fatalities On The Rise

Preliminary data from the Colorado Department of Transportation (CDOT) indicates that traffic fatalities have risen by 24 percent since 2014. In 2016 there were 605 traffic fatalities in Colorado, compared to 547 fatalities in 2015.

The last time fatalities registered over 600 was in 2005 when 606 deaths were recorded. With 3.8 million licensed drivers in Colorado, one in every 33 Colorado drivers will be in a crash this year. Just about every fatal crash is due to risky behaviors, such as not using a seat belt, speeding, driving impaired, or driving distracted. The odds of surviving a crash improve immensely if motorists buckle up, watch their speed, avoid mixing driving with drugs or alcohol, and stay off their phones.