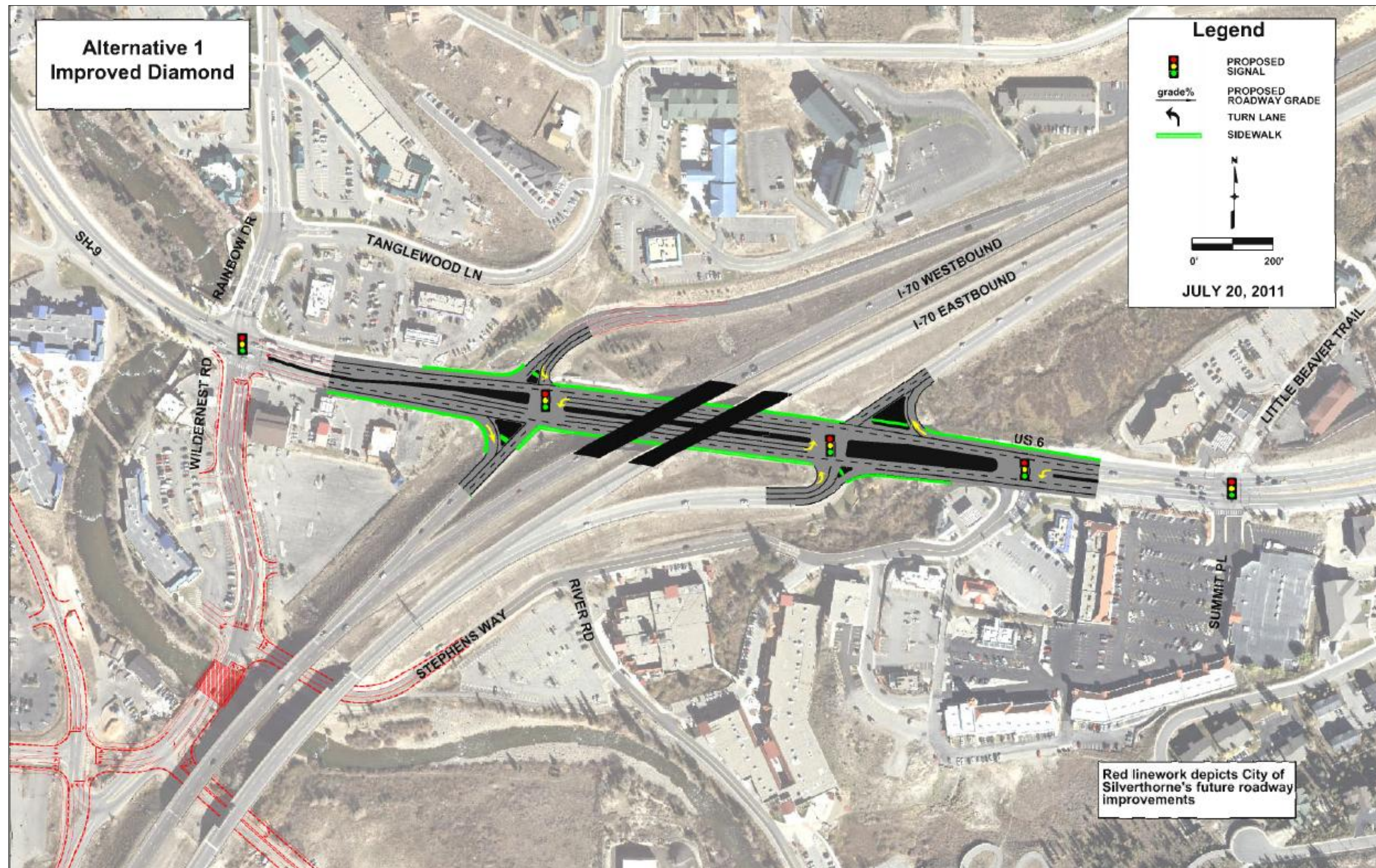


Alternative 1 - Improved Diamond Interchange



Description
The Improved Diamond Interchange alternative maintains the existing ramp locations. The I-70 bridge would be replaced, allowing additional left turns and better separation of pedestrians from traffic.

Advantages

- Little change in footprint
- Easily understandable to drivers unfamiliar with the interchange

Disadvantages

- No reduction in conflict points
- Lower capacity than other alternatives
- Requires bridge reconstruction
- Does not significantly improve existing weaving traffic problems

STATUS

Continue to evaluate