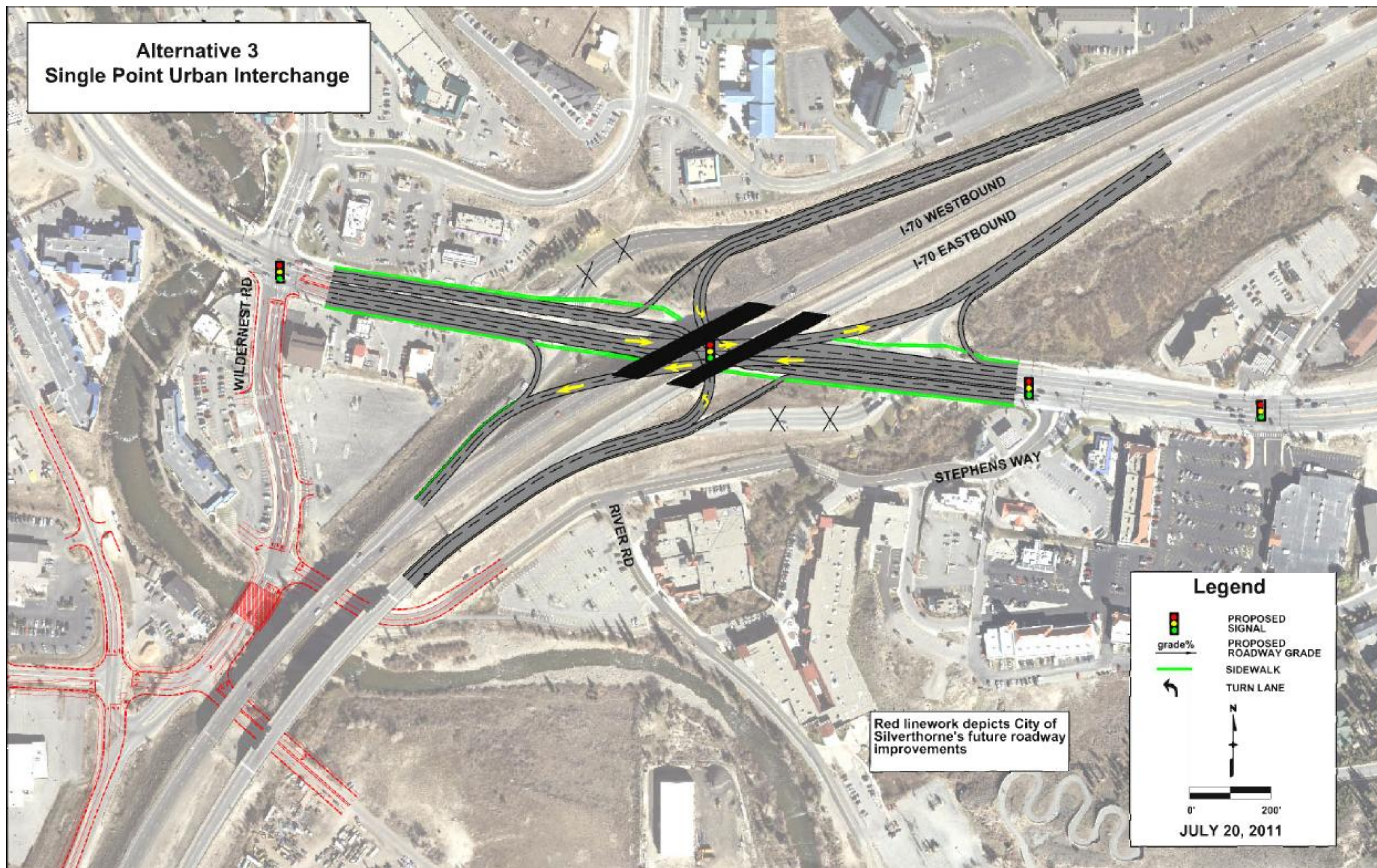


Alternative 3 – Single Point Urban Interchange



Description

The Single Point Urban Interchange alternative combines the eastbound and westbound ramp intersections into one signal-controlled intersection under the I-70 bridge.

Advantages

- Improvements to weaving traffic with the increased distance between intersections
- Number of ramp signals reduced from 2 to 1
- Smallest footprint
- High capacity
- Easiest for trucks/HazMat vehicles to negotiate

Disadvantages

- High construction cost
- Skew of interchange requires longer structure
- Longer lengths for left turns reduces intersection efficiency
- Requires larger bridge to be constructed

STATUS

Continue to evaluate